



MLS 6601051 Lake Home

\$280,000

830 sq ft
1 bedrooms
1 baths

715 Lake Shore Drive
Bemidji MN 56601

Waterfront: Bemidji (main lake)

Status: Active

Description:

Welcome to The Bixby, Bemidji's premier condominium development on the picturesque South Shore of Lake Bemidji! This luxurious lakeside residence features secure indoor parking, two elevators, triple-pane windows, and soundproof insulation to ensure your comfort and privacy. Each unit is equipped with elegant quartz countertops and Onyx Shower systems. This particular floor plan, 'The MacGregor,' is a charming 1 bedroom, 1 bath unit spanning 830 square feet. Located on the lakeside, first floor, Unit 113 offers stunning lake views and easy access to the outdoors. A bike trail conveniently runs by, connecting you to downtown Bemidji, Lake Bemidji State Park, and a delightful public beach just a short walk away. For boating enthusiasts, the city boat slips are located right outside your back door and offer space for Bixby residents. Additionally, the Sanford Center, home of Bemidji State hockey and a popular venue for concerts and entertainment, is nearby. Included in the association fee are natural gas, water, sewer, refuse, snow removal, and landscaping services, making for a hassle-free living experience.

Enjoy lake living without the upkeep—schedule your showing today and discover the exceptional lifestyle awaiting you at The Bixby!

Additional Details:

| | |
|------------------------|---------|
| Year Built | 2022 |
| Lot Dimensions | 348x228 |
| Garage Stalls | 1 |
| School District | 31 |
| Taxes | \$3,208 |
| Taxes with Assessments | \$3,208 |
| Tax Year | 2024 |

Additional Features:

Basement: None **Fuel:** Electric **Garage:** 1 **Heat:** Heat Pump **Sewer:** City Sewer/Connected **Water:** City Water/Connected **Air Conditioning:** Ductless Mini-Split

Driving Directions:

East on 1st Street to Central Ave SE, Left to Lakeshore Drive



Listed By:
Lake-N-Woods Realty

Affinity Real Estate Inc. participates in the Regional Multiple Listing Service of Minnesota, Inc Broker Reciprocity (sm) program, allowing us to display other broker's listings on our website. All properties are subject to prior sale, change or withdrawal.



Call Affinity Real Estate

218-237-3333

info@affinityrealestate.com



Affinity Real Estate - 600 Park Avenue South - Park Rapids MN 56470



website: www.AffinityRealEstate.com | email: info@affinityrealestate.com | office: 218-237-3333 | fax: 218-237-3377

Affinity
REAL ESTATE INC

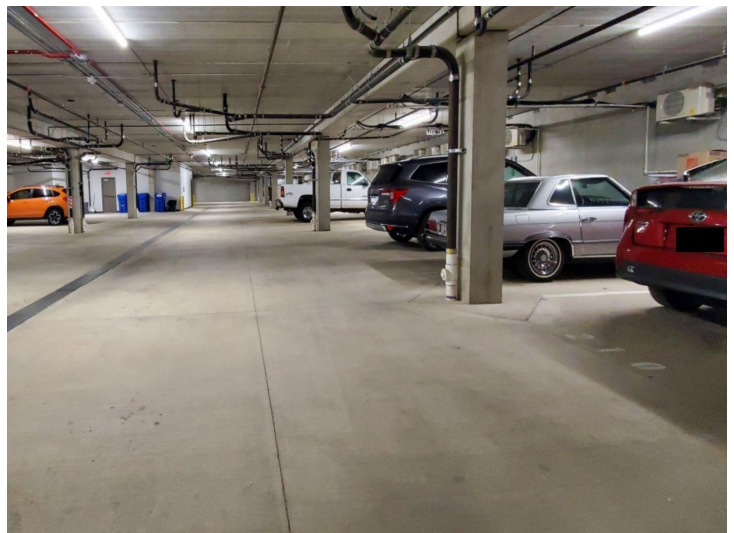
\$280,000
MLS 6601051 Lake Home
715 Lake Shore Drive
Bemidji MN 56601



website: www.AffinityRealEstate.com | email: info@affinityrealestate.com | office: 218-237-3333 | fax: 218-237-3377

Affinity
REAL ESTATE INC

\$280,000
MLS 6601051 Lake Home
715 Lake Shore Drive
Bemidji MN 56601



website: www.AffinityRealEstate.com | email: info@affinityrealestate.com | office: 218-237-3333 | fax: 218-237-3377



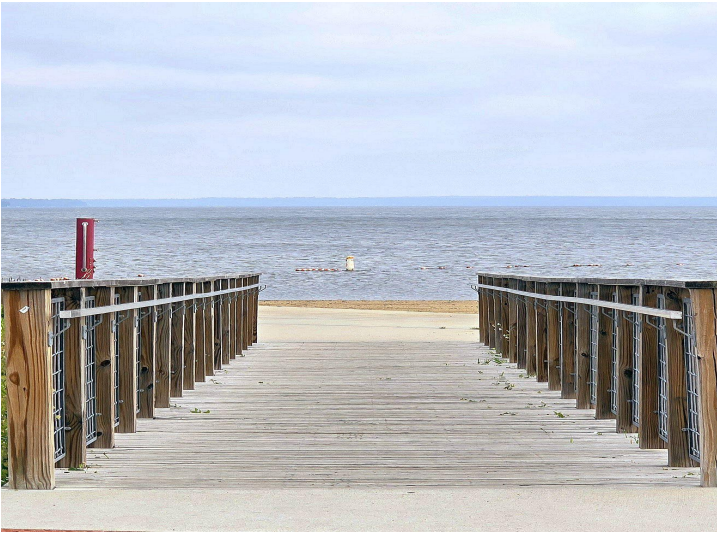
\$280,000
MLS 6601051 Lake Home
715 Lake Shore Drive
Bemidji MN 56601



website: www.AffinityRealEstate.com | email: info@affinityrealestate.com | office: 218-237-3333 | fax:218-237-3377

Affinity
REAL ESTATE INC

\$280,000
MLS 6601051 Lake Home
715 Lake Shore Drive
Bemidji MN 56601



website: www.AffinityRealEstate.com | email: info@affinityrealestate.com | office: 218-237-3333 | fax:218-237-3377



\$280,000
MLS 6601051 Lake Home
715 Lake Shore Drive
Bemidji MN 56601