



MLS 6601058 Lake Home

\$364,000

1,392 sq ft
3 bedrooms
2 baths

1216 Smith Drive
Pine River MN 56474

Waterfront: Ada

Status: Active

Description:

Enjoy end-of-road privacy on almost 2 acres with this single-level home with deeded access to beautiful Ada Lake. Completely renovated inside and out, nothing has been untouched in this home. Experience maintenance-free living with brand new steel siding and soffits, Marvin windows, luxury vinyl planking, and new roof. Spend peaceful mornings sipping coffee on the brand, new patio or invite the gang over for a BBQ after some time on the lake. You'll have no trouble relaxing in your large owner's suite complete with private bath and new walk-in, tile shower – BONUS heated floors in the bathroom and shower! The shared lake access offers a beautiful sand beach and picnic area within a short walk or golf cart ride to the house. Ada Lake is over 960 acres, up to 60ft deep with excellent water clarity making it a wonderful lake for recreation, excellent fishing in all seasons, and this access is great for launching your fish house in Winter. This property has so much to offer for either year-round living or a second home retreat. Possible contract for deed available

Additional Details:


Year Built	1985
Lot Acres	1.9
Lot Dimensions	119x318x100x362
Garage Stalls	2
School District	2174
Taxes	\$1,132
Taxes with Assessments	\$1,198
Tax Year	2024

Additional Features:

Basement: Slab **Fuel:** Electric **Garage:** 2 **Heat:** Baseboard, Radiant Floor **Sewer:** Tank with Drainage Field **Water:** Drilled **Air Conditioning:** None

Driving Directions:

8.9 miles N on Hwy 84 to Smith Dr NW then 6/10ths of a mile E to #1216 on left.

 Listed By:
North Pointe Realty Advantage

Affinity Real Estate Inc. participates in the Regional Multiple Listing Service of Minnesota, Inc Broker Reciprocity (sm) program, allowing us to display other broker's listings on our website. All properties are subject to prior sale, change or withdrawal.

 **Call Affinity Real Estate**
218-237-3333
info@affinityrealestate.com

Affinity Real Estate - 600 Park Avenue South - Park Rapids MN 56470



website: www.AffinityRealEstate.com | email: info@affinityrealestate.com | office: 218-237-3333 | fax: 218-237-3377

Affinity
REAL ESTATE INC

\$364,000
MLS 6601058 Lake Home
1216 Smith Drive
Pine River MN 56474



website: www.AffinityRealEstate.com | email: info@affinityrealestate.com | office: 218-237-3333 | fax:218-237-3377

Affinity
REAL ESTATE INC

\$364,000
MLS 6601058 Lake Home
1216 Smith Drive
Pine River MN 56474



website: www.AffinityRealEstate.com | email: info@affinityrealestate.com | office: 218-237-3333 | fax:218-237-3377

Affinity
REAL ESTATE INC

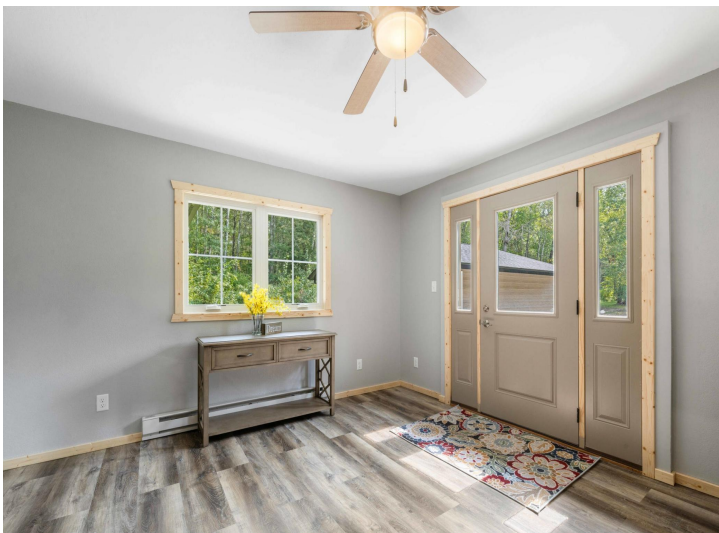
\$364,000
MLS 6601058 Lake Home
1216 Smith Drive
Pine River MN 56474



website: www.AffinityRealEstate.com | email: info@affinityrealestate.com | office: 218-237-3333 | fax:218-237-3377



\$364,000
MLS 6601058 Lake Home
1216 Smith Drive
Pine River MN 56474



website: www.AffinityRealEstate.com | email: info@affinityrealestate.com | office: 218-237-3333 | fax:218-237-3377



\$364,000
MLS 6601058 Lake Home
1216 Smith Drive
Pine River MN 56474



website: www.AffinityRealEstate.com | email: info@affinityrealestate.com | office: 218-237-3333 | fax: 218-237-3377

Affinity
REAL ESTATE INC

\$364,000
MLS 6601058 Lake Home
1216 Smith Drive
Pine River MN 56474



website: www.AffinityRealEstate.com | email: info@affinityrealestate.com | office: 218-237-3333 | fax: 218-237-3377



\$364,000
MLS 6601058 Lake Home
1216 Smith Drive
Pine River MN 56474



website: www.AffinityRealEstate.com | email: info@affinityrealestate.com | office: 218-237-3333 | fax:218-237-3377



\$364,000
MLS 6601058 Lake Home
1216 Smith Drive
Pine River MN 56474