



MLS 6601207 Land

**\$24,900**

0.52 Acres  
Raw Land

750 Elm Avenue  
Menahga MN 56464

Status: Active

**Description:**

**CORNER LOT OPPORTUNITIES!**

This half acre lot in Southgate in Menahga is ready to be built on. Close to downtown yet located in a residential area. All utilities are available, none connected. Utilize this corner lot with options for building. This lot is leveled, cleared and easy to access.

**Additional Details:**

Lot Acres	0.52
Lot Dimensions	150x150
School District	821
Taxes	\$146
Taxes with Assessments	\$146
Tax Year	2024

**Additional Features:**

**Driving Directions:**

From Menahga go South on 71. Take a left on 6th St SE. Take a Right on Elm Ave SE. Property on left. Corner lot of Elm Ave SE and 7th St SE.



Listed By:  
National Realty Guild

Affinity Real Estate Inc. participates in the Regional Multiple Listing Service of Minnesota, Inc Broker Reciprocity (sm) program, allowing us to display other broker's listings on our website. All properties are subject to prior sale, change or withdrawal.



**Call Affinity Real Estate**

**218-237-3333**

**info@affinityrealestate.com**



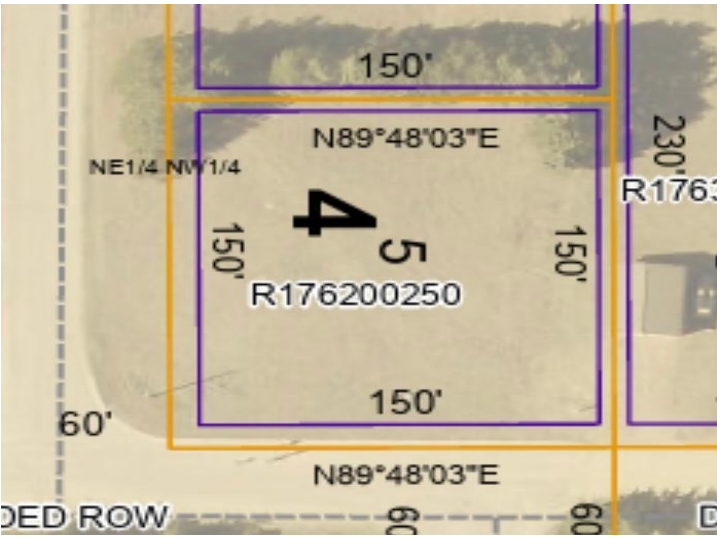
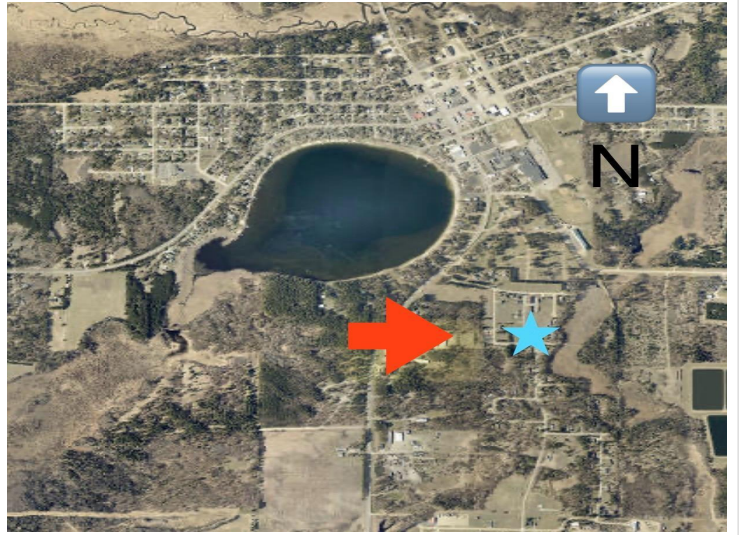
**Affinity Real Estate - 600 Park Avenue South - Park Rapids MN 56470**



website: [www.AffinityRealEstate.com](http://www.AffinityRealEstate.com) | email: [info@affinityrealestate.com](mailto:info@affinityrealestate.com) | office: 218-237-3333 | fax:218-237-3377



**\$24,900**  
MLS 6601207 Land  
750 Elm Avenue  
Menahga MN 56464



website: [www.AffinityRealEstate.com](http://www.AffinityRealEstate.com) | email: [info@affinityrealestate.com](mailto:info@affinityrealestate.com) | office: 218-237-3333 | fax:218-237-3377



**\$24,900**  
MLS 6601207 Land  
750 Elm Avenue  
Menahga MN 56464