



MLS 6601249 Lake Home

\$274,000

900 sq ft
1 bedrooms
1 baths

715 Lake Shore Drive
Bemidji MN 56601

Waterfront: Bemidji (main lake)

Status: Active

Description:

Welcome to The Bixby, Bemidji's premier condominium development on the South Shore of Lake Bemidji! Enjoy secure indoor parking, two elevators, and the comfort of triple pane windows and soundproof insulation. Our care-free living is complemented by luxurious features including quartz countertops and Onyx Shower systems in every unit. This floor plan, 'The Schoolcraft,' offers a spacious 1 bedroom, 1 bath layout with 900 square feet of ADA accessible living space. Unit 106, located on the first floor, boasts southern exposure for plenty of natural light. The Bixby is ideally situated near the Sanford Center, just steps away from a charming public beach, and conveniently connected to downtown Bemidji and Lake Bemidji State Park via a bike trail. The city boat slips are just down the shore and slips are available to Bixby residents. The association fee covers natural gas, water, sewer, refuse, lawn care, and snow removal. Experience the well-built, conveniently located home you've been searching for. Call today to schedule your showing at The Bixby!

Additional Details:

Year Built	2022
Garage Stalls	1
School District	31
Taxes	\$2,908
Taxes with Assessments	\$2,908
Tax Year	2024

Additional Features:

Basement: None **Fuel:** Electric **Garage:** 1 **Heat:** Heat Pump **Sewer:** City Sewer/Connected **Water:** City Water/Connected **Air Conditioning:** Ductless Mini-Split

Driving Directions:

East on 1st Street to Central Ave SE, Left to Lakeshore Drive



Listed By:
Lake-N-Woods Realty

Affinity Real Estate Inc. participates in the Regional Multiple Listing Service of Minnesota, Inc Broker Reciprocity (sm) program, allowing us to display other broker's listings on our website. All properties are subject to prior sale, change or withdrawal.



Call Affinity Real Estate

218-237-3333

info@affinityrealestate.com



Affinity Real Estate - 600 Park Avenue South - Park Rapids MN 56470



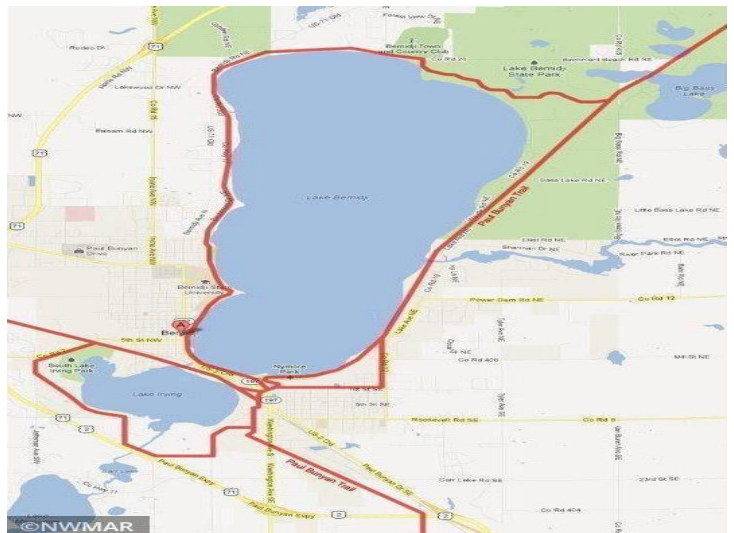
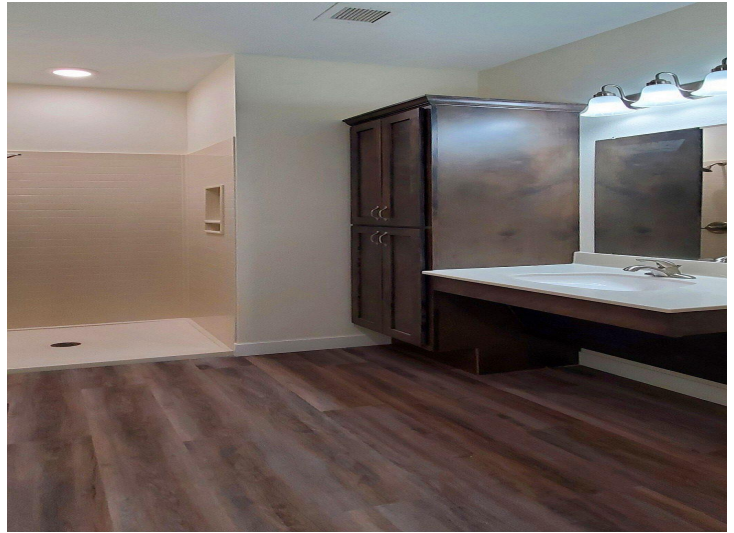
The School Craft



website: www.AffinityRealEstate.com | email: info@affinityrealestate.com | office: 218-237-3333 | fax: 218-237-3377



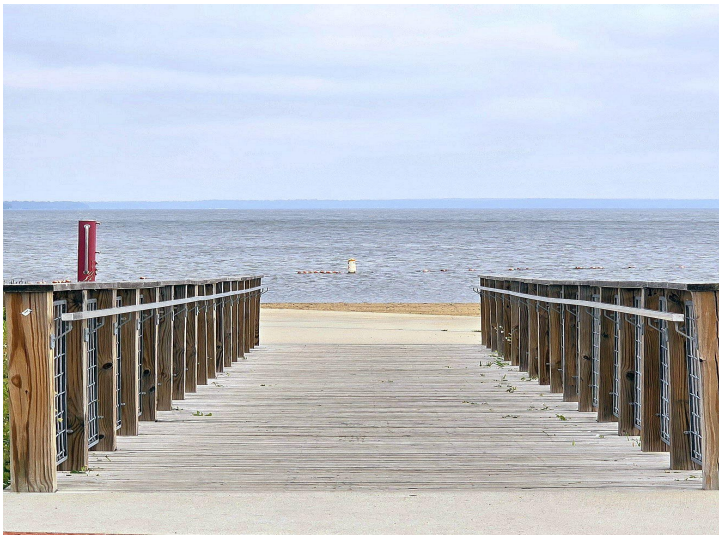
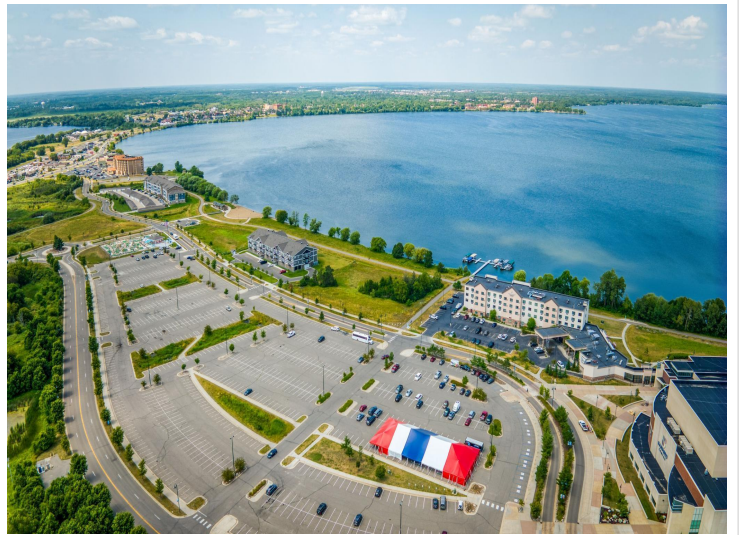
\$274,000
MLS 6601249 Lake Home
715 Lake Shore Drive
Bemidji MN 56601



website: www.AffinityRealEstate.com | email: info@affinityrealestate.com | office: 218-237-3333 | fax:218-237-3377

Affinity
REAL ESTATE INC

\$274,000
MLS 6601249 Lake Home
715 Lake Shore Drive
Bemidji MN 56601



website: www.AffinityRealEstate.com | email: info@affinityrealestate.com | office: 218-237-3333 | fax:218-237-3377



\$274,000
MLS 6601249 Lake Home
715 Lake Shore Drive
Bemidji MN 56601