



MLS 6601903 Land

\$139,900

40 Acres
Raw Land

49735 Thorn Apple Road
Aldrich MN 56434

Status: Active



Description:

Great Hunting, Deer, Bear, Turkey Could pasture areas, lower area runs through the center of the property, building site could be on East or West side.

Additional Details:

Lot Acres	40
Lot Dimensions	+/- 1320 x 1320
School District	2170
Taxes	\$1,372
Taxes with Assessments	\$1,426
Tax Year	2024

Additional Features:

Driving Directions:

From the intersection of US Hwy 10 and County Road 11 in Aldrich; Then South on County 11 2 miles to Thorn Apple Road; East on Thorn Apple Road 1/4 mile, property on the Northside. You are at the Westerly edge of the property.



Listed By:
The Gores Company

Affinity Real Estate Inc. participates in the Regional Multiple Listing Service of Minnesota, Inc Broker Reciprocity (sm) program, allowing us to display other broker's listings on our website. All properties are subject to prior sale, change or withdrawal.



Call Affinity Real Estate

218-237-3333

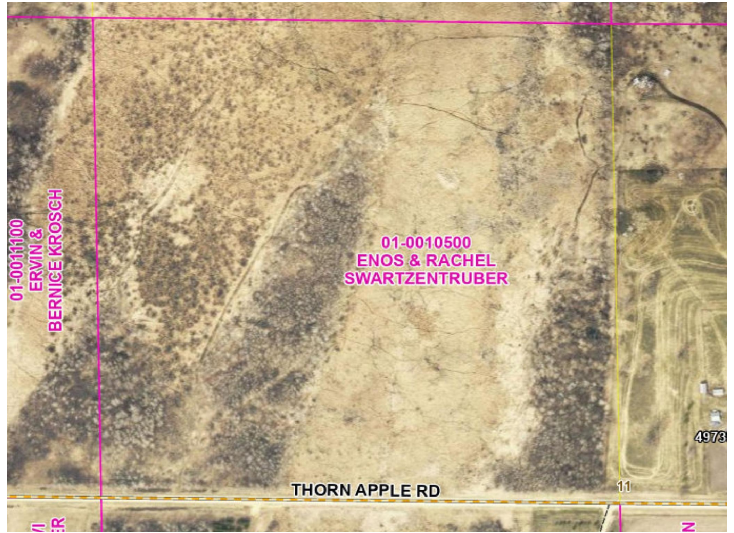
info@affinityrealestate.com



Affinity Real Estate - 600 Park Avenue South - Park Rapids MN 56470



14,514
46,348 | -94,935



website: www.AffinityRealEstate.com | email: info@affinityrealestate.com | office: 218-237-3333 | fax:218-237-3377



\$139,900
MLS 6601903 Land
49735 Thorn Apple Road
Aldrich MN 56434