



MLS 6603213 Lake Home

\$1,150,000

3,200 sq ft
4 bedrooms
5 baths

35165 Quiet Aly
Pequot Lakes MN 56472

Waterfront: Clamshell

Status: Active

Description:

Don't miss this recently built four bedroom, five bath home on Clamshell Lake of the Whitefish Chain. Home was just completed in 2023 by Nor-Son Custom Builders. Enjoy true maintenance free living in a beautiful, exceptionally cared for lake home on Clamshell Lake. Attention to detail is the only way to describe this home; from the custom cabinets, granite countertops, tiled back splash, custom wet bar upstairs, open floor plan, tiled showers, fireplace and so much more. Enjoy the shared pool, sand beach, fire pit and other amenities. Home is being sold fully furnished and turn key. Great rental opportunity as well. Set up a showing today!

Additional Details:

Year Built	2023
Lot Acres	12.5
Lot Dimensions	470x120
School District	186
Taxes	\$364
Taxes with Assessments	\$364
Tax Year	2023

Additional Features:

Fuel: Electric, Natural Gas **Heat:** Forced Air, Fireplace(s)

Driving Directions:

From Highway 371 go east on County Road 16 for about five miles and resort will be on your left. 35197 S. Clamshell Road. From Crosslake at the intersection of County Road 3 and County Road 16 go west for about seven miles and the resort will be on your right.



Listed By:
eXp Realty

Affinity Real Estate Inc. participates in the Regional Multiple Listing Service of Minnesota, Inc Broker Reciprocity (sm) program, allowing us to display other broker's listings on our website. All properties are subject to prior sale, change or withdrawal.



Call Affinity Real Estate

218-237-3333

info@affinityrealestate.com



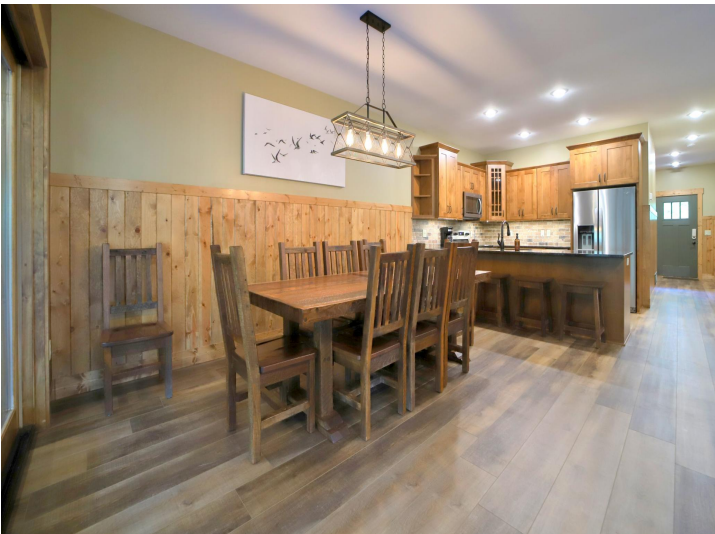
Affinity Real Estate - 600 Park Avenue South - Park Rapids MN 56470



website: www.AffinityRealEstate.com | email: info@affinityrealestate.com | office: 218-237-3333 | fax: 218-237-3377



\$1,150,000
 MLS 6603213 Lake Home
 35165 Quiet Aly
 Pequot Lakes MN 56472



website: www.AffinityRealEstate.com | email: info@affinityrealestate.com | office: 218-237-3333 | fax: 218-237-3377

Affinity
REAL ESTATE INC

\$1,150,000
MLS 6603213 Lake Home
35165 Quiet Aly
Pequot Lakes MN 56472



website: www.AffinityRealEstate.com | email: info@affinityrealestate.com | office: 218-237-3333 | fax: 218-237-3377



\$1,150,000
MLS 6603213 Lake Home
35165 Quiet Aly
Pequot Lakes MN 56472



website: www.AffinityRealEstate.com | email: info@affinityrealestate.com | office: 218-237-3333 | fax: 218-237-3377

Affinity
REAL ESTATE INC

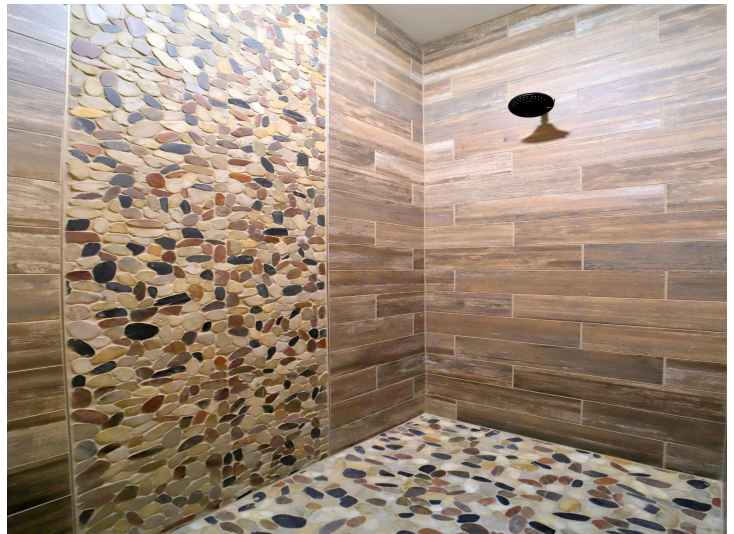
\$1,150,000
MLS 6603213 Lake Home
35165 Quiet Aly
Pequot Lakes MN 56472



website: www.AffinityRealEstate.com | email: info@affinityrealestate.com | office: 218-237-3333 | fax: 218-237-3377

Affinity
REAL ESTATE INC

\$1,150,000
MLS 6603213 Lake Home
35165 Quiet Aly
Pequot Lakes MN 56472



website: www.AffinityRealEstate.com | email: info@affinityrealestate.com | office: 218-237-3333 | fax: 218-237-3377

Affinity
REAL ESTATE INC

\$1,150,000
MLS 6603213 Lake Home
35165 Quiet Aly
Pequot Lakes MN 56472



website: www.AffinityRealEstate.com | email: info@affinityrealestate.com | office: 218-237-3333 | fax: 218-237-3377



\$1,150,000
 MLS 6603213 Lake Home
 35165 Quiet Aly
 Pequot Lakes MN 56472



website: www.AffinityRealEstate.com | email: info@affinityrealestate.com | office: 218-237-3333 | fax: 218-237-3377



\$1,150,000
 MLS 6603213 Lake Home
 35165 Quiet Aly
 Pequot Lakes MN 56472



website: www.AffinityRealEstate.com | email: info@affinityrealestate.com | office: 218-237-3333 | fax: 218-237-3377



\$1,150,000
MLS 6603213 Lake Home
35165 Quiet Aly
Pequot Lakes MN 56472