



MLS 6603330 Lake Home

\$479,000

2,425 sq ft
3 bedrooms
2 baths

10696 County Road 26
Verndale MN 56481

Waterfront: Unnamed Lake

Status: Active

Description:

RELAX – Enjoy the breath-taking view to your own log home on over 19 acres of land on your well paved drive. It’s peaceful, private and secluded. Enjoy the pond, the wildlife, as well as the peace and quiet of the country but only minutes away from town on road County Road 26. Numerous fruit bearing plants and scenic nature are in your future. This 3-bedroom, 2 bath log home is a must see – don’t forget to take a look at the oversized garage (30 X 40), workshop/machine shed (30 X 47) for special projects and the insulated and heated garage/storage shed (15 X 40) with a stove, refrigerator & pool table – great place for your very own man cave. PLUS, additional toys and equipment can be stored under the lean to of 16 X 87. Garages and shops can accommodate 8+ vehicles. Interior of the home is bright and open and also boasts a large upper loft area which can be sleeping quarters, a great place for game night/weekend for the adults or kids OR a great hunting story telling area (served up by making your own homemade apple pie with fruit from your own trees). Property is great for hunting, nature walking, four wheeling or ranger riding – it pretty much has it all. Adjacent land (38.14 acres) for sale (MLS #6603403)

Additional Details:


Year Built	1975
Lot Acres	19.16
Lot Dimensions	66 x 1252
Garage Stalls	6
School District	2170
Taxes	\$4,008
Taxes with Assessments	\$4,008
Tax Year	2024

Additional Features:

Basement: Block, Slab **Fuel:** Propane **Garage:** 6 **Heat:** Radiant Floor **Sewer:** Mound Septic, Private Sewer, Septic System Compliant - Yes
Water: Private, Sand Point, Well **Air Conditioning:** Ductless Mini-Split

Driving Directions:

4.5 miles West of Staples on Hwy. 10 to north (right) on County Rd 26 (Nimrod Road) about 1 mile on the right



Listed By:
Trilogy Real Estate

Affinity Real Estate Inc. participates in the Regional Multiple Listing Service of Minnesota, Inc Broker Reciprocity (sm) program, allowing us to display other broker’s listings on our website. All properties are subject to prior sale, change or withdrawal.



Call Affinity Real Estate
218-237-3333
info@affinityrealestate.com



Affinity Real Estate - 600 Park Avenue South - Park Rapids MN 56470



website: www.AffinityRealEstate.com | email: info@affinityrealestate.com | office: 218-237-3333 | fax:218-237-3377



\$479,000
MLS 6603330 Lake Home
10696 County Road 26
Verndale MN 56481



website: www.AffinityRealEstate.com | email: info@affinityrealestate.com | office: 218-237-3333 | fax:218-237-3377



\$479,000
MLS 6603330 Lake Home
10696 County Road 26
Verndale MN 56481



website: www.AffinityRealEstate.com | email: info@affinityrealestate.com | office: 218-237-3333 | fax:218-237-3377

Affinity
REAL ESTATE INC

\$479,000
MLS 6603330 Lake Home
10696 County Road 26
Verndale MN 56481



website: www.AffinityRealEstate.com | email: info@affinityrealestate.com | office: 218-237-3333 | fax:218-237-3377



\$479,000
MLS 6603330 Lake Home
10696 County Road 26
Verndale MN 56481



website: www.AffinityRealEstate.com | email: info@affinityrealestate.com | office: 218-237-3333 | fax: 218-237-3377

Affinity
REAL ESTATE INC

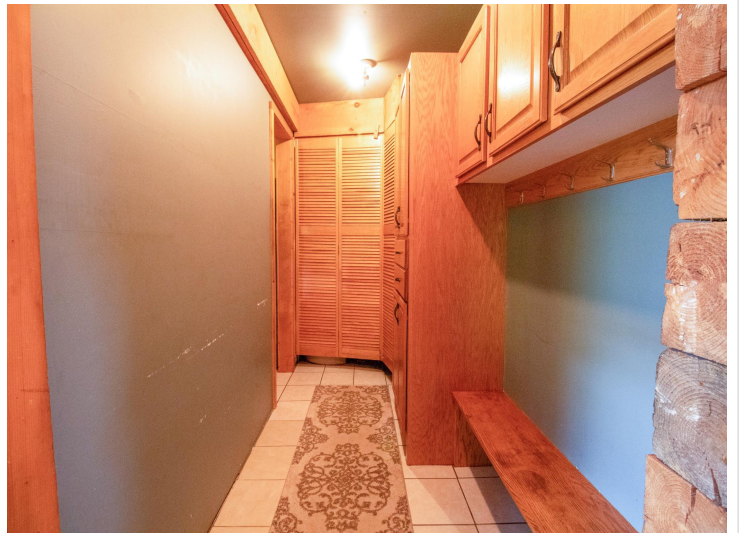
\$479,000
MLS 6603330 Lake Home
10696 County Road 26
Verndale MN 56481



website: www.AffinityRealEstate.com | email: info@affinityrealestate.com | office: 218-237-3333 | fax: 218-237-3377

Affinity
REAL ESTATE INC

\$479,000
MLS 6603330 Lake Home
10696 County Road 26
Verndale MN 56481



website: www.AffinityRealEstate.com | email: info@affinityrealestate.com | office: 218-237-3333 | fax: 218-237-3377

Affinity
REAL ESTATE INC

\$479,000
MLS 6603330 Lake Home
10696 County Road 26
Verndale MN 56481



website: www.AffinityRealEstate.com | email: info@affinityrealestate.com | office: 218-237-3333 | fax: 218-237-3377

Affinity
REAL ESTATE INC

\$479,000
MLS 6603330 Lake Home
10696 County Road 26
Verndale MN 56481



website: www.AffinityRealEstate.com | email: info@affinityrealestate.com | office: 218-237-3333 | fax: 218-237-3377

Affinity
REAL ESTATE INC

\$479,000
MLS 6603330 Lake Home
10696 County Road 26
Verndale MN 56481