



MLS 6603434 Lake Land

\$139,900

Description:

Build Your Dream Home on this Scenic Mississippi River Lot! This prime property offers a cleared building site, ready for your new home or camper. With a road approach already in place, you'll have convenient access to your future retreat. A beautifully maintained path leads directly to the river's edge, where you can relax and enjoy the peaceful surroundings. Located just minutes from Rabbit Lake and popular mountain bike trails, this lot is perfect for outdoor enthusiasts. Don't miss out on this unique opportunity to own a slice of Minnesota's natural beauty!

Additional Details:

Lot Acres	5.4
Lot Dimensions	308x741x306x754
School District	182
Taxes	\$142
Taxes with Assessments	\$142
Tax Year	2024

Additional Features:

Driving Directions:

From Crosby Go North On Highway 6 to Right On County Road 30 To lot on left.



Listed By:
Coldwell Banker Crown Realtors

Affinity Real Estate Inc. participates in the Regional Multiple Listing Service of Minnesota, Inc Broker Reciprocity (sm) program, allowing us to display other broker's listings on our website. All properties are subject to prior sale, change or withdrawal.



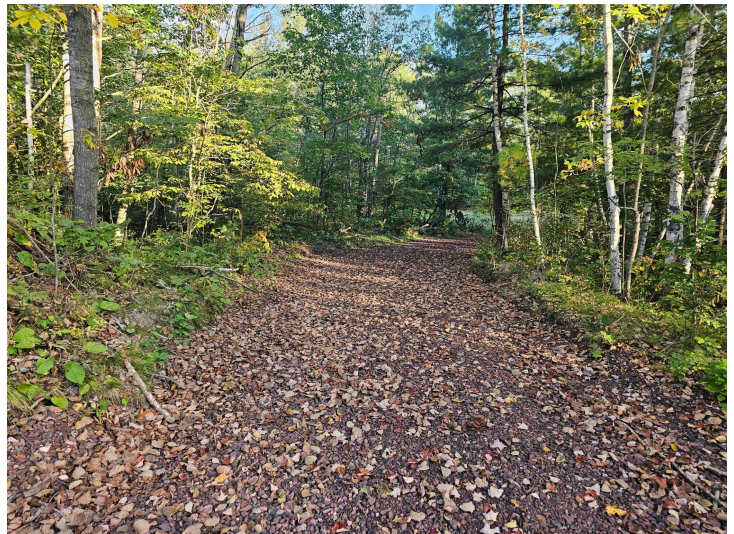
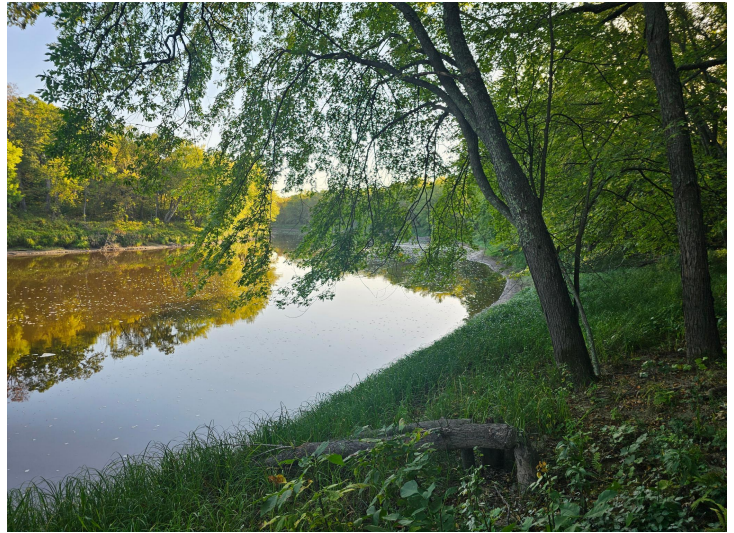
Call Affinity Real Estate

218-237-3333

info@affinityrealestate.com



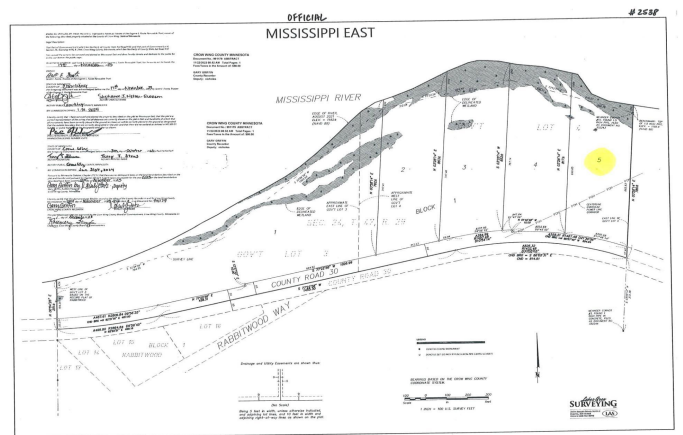
Affinity Real Estate - 600 Park Avenue South - Park Rapids MN 56470



website: www.AffinityRealEstate.com | email: info@affinityrealestate.com | office: 218-237-3333 | fax:218-237-3377



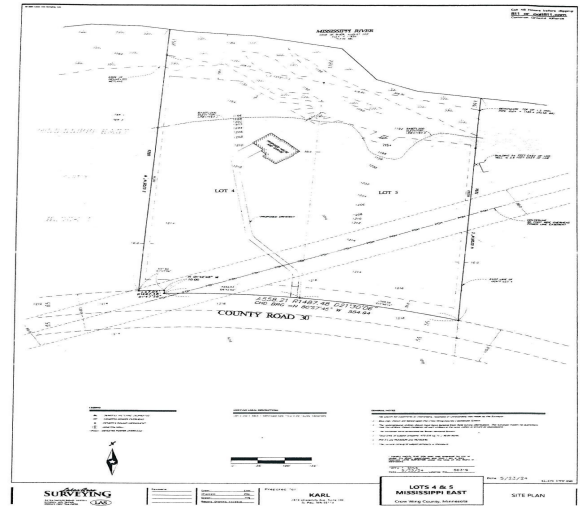
\$139,900
MLS 6603434 Lake Land
Lot 5 Blk 1, 5.4 Acres County
Road 30
Crosby MN 56441



website: www.AffinityRealEstate.com | email: info@affinityrealestate.com | office: 218-237-3333 | fax:218-237-3377



\$139,900
 MLS 6603434 Lake Land
 Lot 5 Blk 1, 5.4 Acres County
 Road 30
 Crosby MN 56441



website: www.AffinityRealEstate.com | email: info@affinityrealestate.com | office: 218-237-3333 | fax:218-237-3377



\$139,900
 MLS 6603434 Lake Land
 Lot 5 Blk 1, 5.4 Acres County
 Road 30
 Crosby MN 56441