



MLS 6603582 Lake Land

\$195,000

Description:

6.3 ACRE Lake Lot abuts 100's of acres of County Land. This is the second to the last lot on this side of Eagle Lake making for great privacy. Eagle Lake is part of the 3-Lake Chain of Potato, Island and Eagle Lake offering over 3000+ acres of recreational lake access. Fully wooded property and fantastic building sites. Level shoreline can be improved. This lot has phenomenal woods and great possibilities for building, hunting, and recreation. You don't see 6.3 Acre level lake lots abutting County Land like this one offers.

Additional Details:

Lot Acres	6.3
Lot Dimensions	163x785x600x894
School District	309
Taxes	\$714
Taxes with Assessments	\$714
Tax Year	2024

Additional Features:

Driving Directions:

Take Hwy 71 N from Park Rapids 7 miles to CR 40. Turn right and go 1.2 miles to Hammock Drive. Turn left and continue on Hammock Drive, continue 1.3 miles to end of road



Listed By:
Premium Properties Realty

Affinity Real Estate Inc. participates in the Regional Multiple Listing Service of Minnesota, Inc Broker Reciprocity (sm) program, allowing us to display other broker's listings on our website. All properties are subject to prior sale, change or withdrawal.



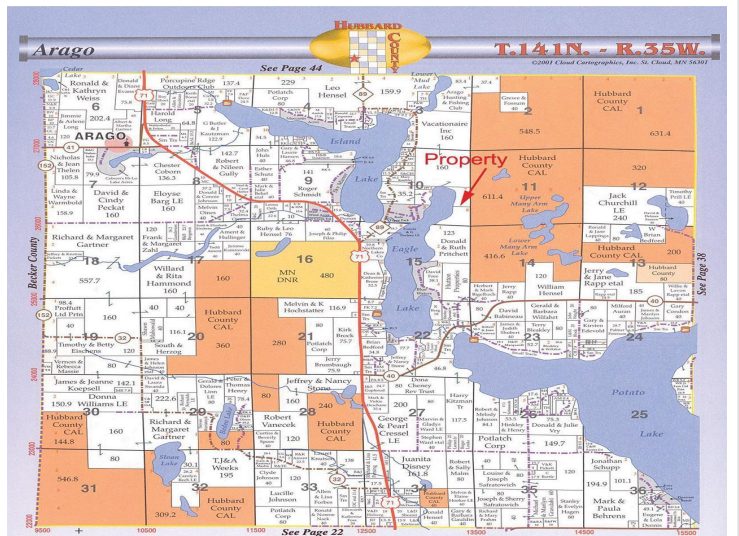
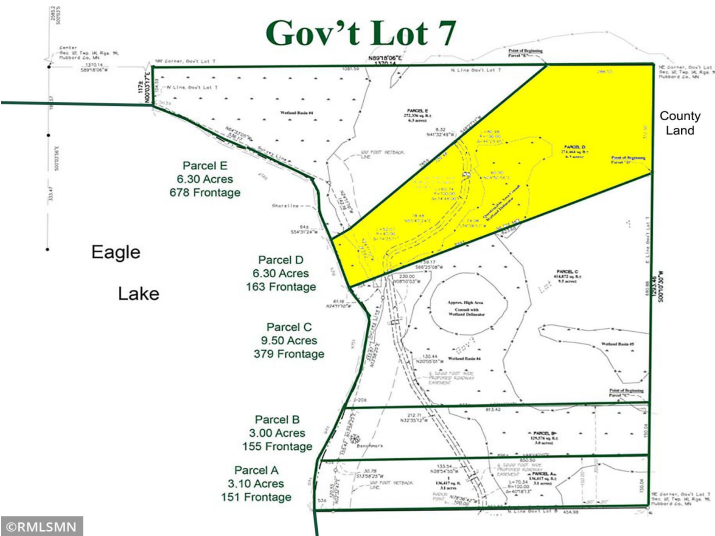
Call Affinity Real Estate

218-237-3333

info@affinityrealestate.com



Affinity Real Estate - 600 Park Avenue South - Park Rapids MN 56470



website: www.AffinityRealEstate.com | email: info@affinityrealestate.com | office: 218-237-3333 | fax:218-237-3377



\$195,000
 MLS 6603582 Lake Land
 Parcel D Hammock Drive
 Park Rapids MN 56470