



MLS 6603776 Lake Land

\$199,000

Description:

1.18 ACRE and 150' of LAKESHORE on LAKE IDA. In the heart of lakes country, this 1+ acre lot is ready for development. Build a house, shop or shouse - stay and play. Beautiful trees, plenty of room to build and nice shoreline on the North end of Ida. Stroll down to the Roadhouse for a burger after a day on the lake.

Additional Details:

| | |
|------------------------|-------|
| Lot Acres | 1.18 |
| Lot Dimensions | irr |
| School District | 2889 |
| Taxes | \$128 |
| Taxes with Assessments | \$128 |
| Tax Year | 2024 |

Additional Features:

Driving Directions:

From Lake Park South on Co 5, at Roadhouse bar and grill take a right on Co 4. Look for signs on North and Lakeshore on South side.



Listed By:
Re/Max Lakes Region

Affinity Real Estate Inc. participates in the Regional Multiple Listing Service of Minnesota, Inc Broker Reciprocity (sm) program, allowing us to display other broker's listings on our website. All properties are subject to prior sale, change or withdrawal.



Call Affinity Real Estate

218-237-3333

info@affinityrealestate.com



Affinity Real Estate - 600 Park Avenue South - Park Rapids MN 56470



website: www.AffinityRealEstate.com | email: info@affinityrealestate.com | office: 218-237-3333 | fax: 218-237-3377



\$199,000

MLS 6603776 Lake Land
Lot 2 Co Hwy 4
Lake Park MN 56554



website: www.AffinityRealEstate.com | email: info@affinityrealestate.com | office: 218-237-3333 | fax: 218-237-3377

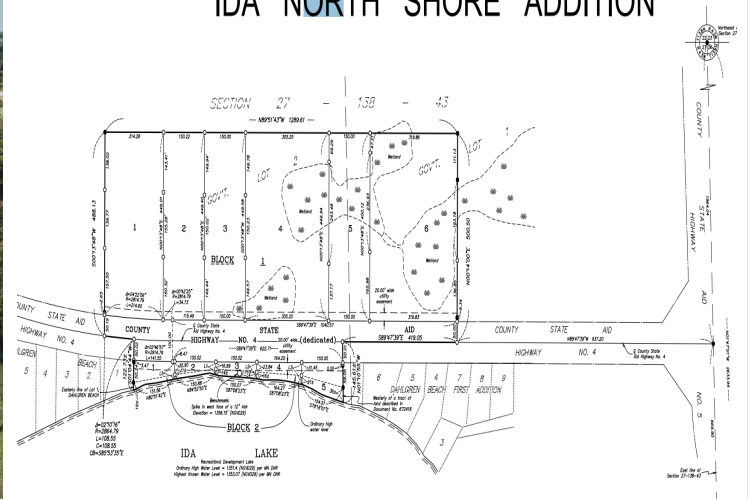


\$199,000

MLS 6603776 Lake Land
Lot 2 Co Hwy 4
Lake Park MN 56554



IDA NORTH SHORE ADDITION



website: www.AffinityRealEstate.com | email: info@affinityrealestate.com | office: 218-237-3333 | fax: 218-237-3377



\$199,000
 MLS 6603776 Lake Land
 Lot 2 Co Hwy 4
 Lake Park MN 56554