



MLS 6603782 Lake Land

\$199,000

Description:

2.13 ACRES and 141' of LAKESHORE on LAKE IDA. In the heart of lakes country this two acre lot is ready for development. Build a house, shop or shouse - stay and play. Beautiful trees, plenty of room to build and nice shoreline on the North end of Ida. Stroll down to the Roadhouse for a burger after a day on the lake.

Additional Details:

Lot Acres	2.13
Lot Dimensions	irr
School District	2889
Taxes	\$52
Taxes with Assessments	\$52
Tax Year	2024

Additional Features:

Driving Directions:

From Lake Park South on Co 5, at Roadhouse bar and grill take a right on Co 4. Look for signs on North and Lakeshore on South side.



Listed By:
Re/Max Lakes Region

Affinity Real Estate Inc. participates in the Regional Multiple Listing Service of Minnesota, Inc Broker Reciprocity (sm) program, allowing us to display other broker's listings on our website. All properties are subject to prior sale, change or withdrawal.



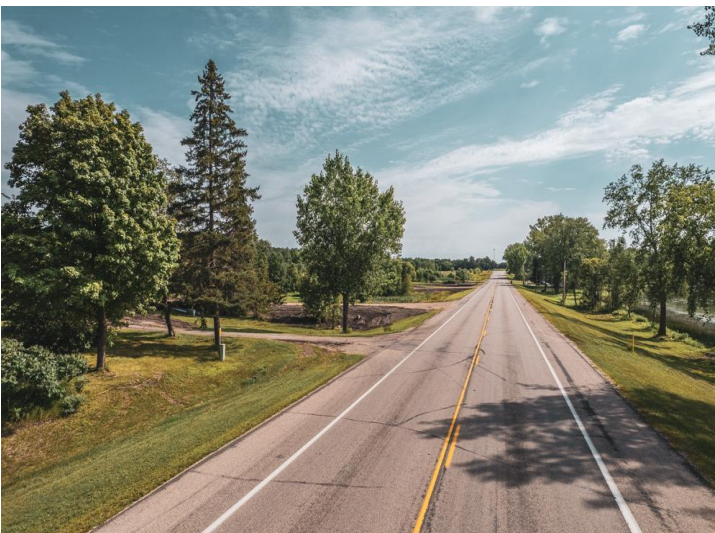
Call Affinity Real Estate

218-237-3333

info@affinityrealestate.com



Affinity Real Estate - 600 Park Avenue South - Park Rapids MN 56470



website: www.AffinityRealEstate.com | email: info@affinityrealestate.com | office: 218-237-3333 | fax: 218-237-3377



\$199,000

MLS 6603782 Lake Land
Lot 1 Co Hwy 4
Lake Park MN 56554



website: www.AffinityRealEstate.com | email: info@affinityrealestate.com | office: 218-237-3333 | fax: 218-237-3377

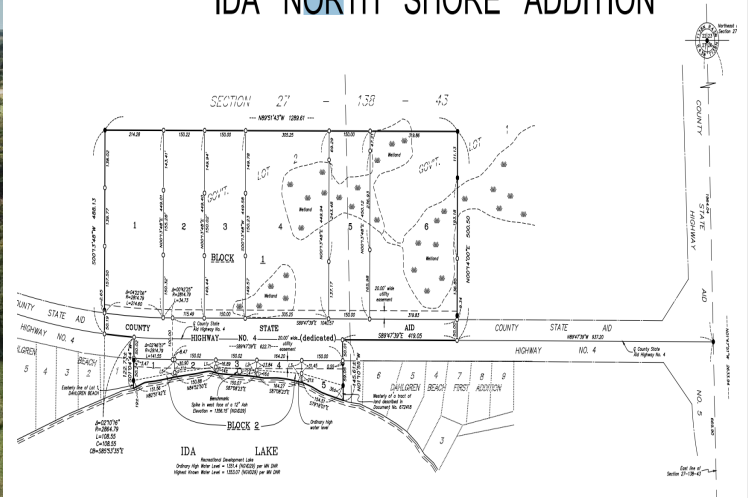


\$199,000

MLS 6603782 Lake Land
Lot 1 Co Hwy 4
Lake Park MN 56554



IDA NORTH SHORE ADDITION



website: www.AffinityRealEstate.com | email: info@affinityrealestate.com | office: 218-237-3333 | fax: 218-237-3377



\$199,000
MLS 6603782 Lake Land
Lot 1 Co Hwy 4
Lake Park MN 56554