



MLS 6603897 Residential

\$394,900

2,292 sq ft
3 bedrooms
2 baths

51745 Warbler Drive
Bemidji MN 56601

Status: Pending

Description:

MINNESOTA LOG HOME! Nestled in the forest trees, this 2,384 sq. ft., low-maintenance log home is quality built and meticulously maintained. Enjoy your morning coffee and evening cocktails on the huge deck. Step into the well-designed kitchen with a generously sized, L-shaped center island, and stainless-steel appliances. The kitchen/dining area has room for a large table for hosting. The oak floors, abundance of interior antique pine, soft natural lighting, creates warm, authentic Northwoods feel. The floor-to-ceiling 16x6 bank of windows, provides a tree-house view into the ever-changing forest scene. The main-floor owners suite features French doors, ample space, while still providing a very cozy feel. There are two bedrooms on the main-level, one bathroom on the main and one in the lower-level. The lower-level of this home provides an additional bedroom, bath, and family room, and a small bonus area that could serve as an office, or hobby room. There is a large bank of garden-level windows offering great views to the ground level forest that surrounds the home. This lower-level is a great separate space for visiting family and guests. A detached 2.5 car (30x24) garage is located adjacent to the home. It features plenty of room for 2 cars, plus an additional workshop space, and plenty of storage along the back wall. Surrounded by nature, this home is conveniently located only 4 miles from town amenities. The home is also located adjacent (400 yards) to the public boat landing on Grace Lake. Grace Lake is a highly regarded walleye, northern, crappie, and bass lake. With very little fishing pressure, these fish get big. Due to its size, it is also nice for kayaking, boating, or canoeing. This location would be a great home base for all that northern Minnesota has to offer. There is an adjacent 2.5 acre wooded lot listed separately for sale. See MLS#6604068

Additional Details:

| | |
|------------------------|---------|
| Year Built | 1991 |
| Lot Acres | 1.65 |
| Lot Dimensions | 350x205 |
| Garage Stalls | 2 |
| School District | 31 |
| Taxes | \$2,192 |
| Taxes with Assessments | \$2,192 |
| Tax Year | 2024 |

Additional Features:

Exterior: Full Fuel: Propane Garage: 2 Heat: Baseboard Radiator Wood Stove Sewer: Private Sewer Water: Well Air
Listed By: Broker Reciprocity
Mississippi Valley Real Estate

Driving Real Estate Inc. participates in the Regional Multiple Listing Service of Minnesota, Inc. Broker Reciprocity (sm) program, allowing us to display other broker's listings on our website. All properties are subject to prior sale, change or withdrawal.



Call Affinity Real Estate

218-237-3333

info@affinityrealestate.com

MLS



Drive, go right on Warbler

Affinity Real Estate - 600 Park Avenue South - Park Rapids MN 56470



website: www.AffinityRealEstate.com | email: info@affinityrealestate.com | office: 218-237-3333 | fax: 218-237-3377

Affinity
REAL ESTATE INC

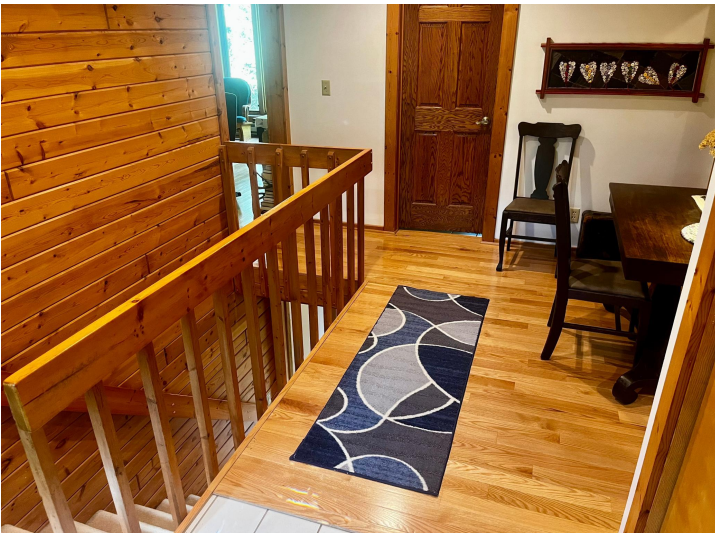
\$394,900
MLS 6603897 Residential
51745 Warbler Drive
Bemidji MN 56601



website: www.AffinityRealEstate.com | email: info@affinityrealestate.com | office: 218-237-3333 | fax: 218-237-3377

Affinity
REAL ESTATE INC

\$394,900
MLS 6603897 Residential
51745 Warbler Drive
Bemidji MN 56601



website: www.AffinityRealEstate.com | email: info@affinityrealestate.com | office: 218-237-3333 | fax: 218-237-3377

Affinity
REAL ESTATE INC

\$394,900
MLS 6603897 Residential
51745 Warbler Drive
Bemidji MN 56601



website: www.AffinityRealEstate.com | email: info@affinityrealestate.com | office: 218-237-3333 | fax: 218-237-3377

Affinity
REAL ESTATE INC

\$394,900
MLS 6603897 Residential
51745 Warbler Drive
Bemidji MN 56601



website: www.AffinityRealEstate.com | email: info@affinityrealestate.com | office: 218-237-3333 | fax: 218-237-3377

Affinity
REAL ESTATE INC

\$394,900
MLS 6603897 Residential
51745 Warbler Drive
Bemidji MN 56601



website: www.AffinityRealEstate.com | email: info@affinityrealestate.com | office: 218-237-3333 | fax: 218-237-3377

Affinity
REAL ESTATE INC

\$394,900
MLS 6603897 Residential
51745 Warbler Drive
Bemidji MN 56601



website: www.AffinityRealEstate.com | email: info@affinityrealestate.com | office: 218-237-3333 | fax:218-237-3377



\$394,900
MLS 6603897 Residential
51745 Warbler Drive
Bemidji MN 56601