



MLS 6604088 Residential

\$285,000

1,790 sq ft
4 bedrooms
2 baths

1124 Summit Avenue
Detroit Lakes MN 56501

Status: Active

Description:

Your home search has come to an end once you see this charming character 4 bedroom 2 bathroom home. Sits in an established highly sought after neighborhood. You're bound to fall in love with the vintage millwork and hardwood floors throughout. Boasts a formal dining area with an elegant bay window for entertaining. Afterwards head into the living room and cozy up to the field stone gas fire place. Moving onto the kitchen you will notice the abundance of cabinets, newer countertops, and main level laundry. However if you prefer to have the laundry in the basement there are hook ups located down there as well. Heading upstairs you will see the elegant staircase that leads you to the large four bedrooms and even more built in cabinetry. Looking to enjoy the outdoors? Choose from enjoying the mornings or evenings in the three season porch or head around back to the fully fenced in beautiful back yard. Equipped with a newer sprinkler system to ensure you will always have that beautiful yard. What makes this home also stand out is 29 windows were replaced in the last 4 years by Window World to increase energy efficiency and an oversized heated garage built approximately a year ago. Other recent updates include newer electrical panel and wiring, gutter guards, and flooring. Owners have hired an inspector to thoroughly inspect the home, report available upon request. This home is ready for it's next owner. Assumable loan at a 2.25% interest rate, 12 years remaining. Take a look today!


Additional Details:

Year Built	1910
Lot Acres	0.32
Lot Dimensions	73 x 190
Garage Stalls	2
School District	22
Taxes	\$2,742
Taxes with Assessments	\$2,742
Tax Year	2023

Additional Features:

Basement: Full, Unfinished **Fuel:** Natural Gas **Garage:** 2 **Heat:** Forced Air **Sewer:** City Sewer/Connected **Water:** City Water/Connected **Air Conditioning:** Central Air

Driving Directions:

 Summit Ave go south on summit ave
eXp Realty (3523 FGO)

Affinity Real Estate Inc. participates in the Regional Multiple Listing Service of Minnesota, Inc Broker Reciprocity (sm) program, allowing us to display other broker's listings on our website. All properties are subject to prior sale, change or withdrawal.



Call Affinity Real Estate
218-237-3333
info@affinityrealestate.com



Affinity Real Estate - 600 Park Avenue South - Park Rapids MN 56470



website: www.AffinityRealEstate.com | email: info@affinityrealestate.com | office: 218-237-3333 | fax:218-237-3377

Affinity
REAL ESTATE INC

\$285,000
MLS 6604088 Residential
1124 Summit Avenue
Detroit Lakes MN 56501



website: www.AffinityRealEstate.com | email: info@affinityrealestate.com | office: 218-237-3333 | fax: 218-237-3377

Affinity
REAL ESTATE INC

\$285,000
MLS 6604088 Residential
1124 Summit Avenue
Detroit Lakes MN 56501



website: www.AffinityRealEstate.com | email: info@affinityrealestate.com | office: 218-237-3333 | fax: 218-237-3377

Affinity
REAL ESTATE INC

\$285,000
MLS 6604088 Residential
1124 Summit Avenue
Detroit Lakes MN 56501



website: www.AffinityRealEstate.com | email: info@affinityrealestate.com | office: 218-237-3333 | fax: 218-237-3377

Affinity
REAL ESTATE INC

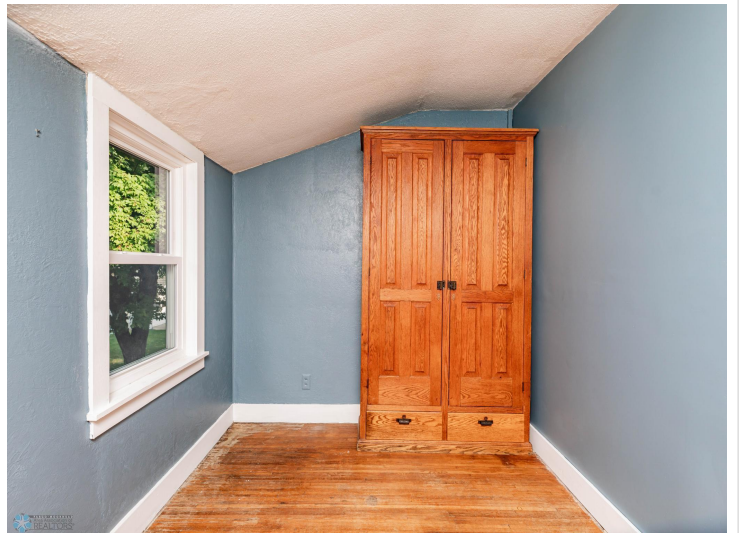
\$285,000
MLS 6604088 Residential
1124 Summit Avenue
Detroit Lakes MN 56501



website: www.AffinityRealEstate.com | email: info@affinityrealestate.com | office: 218-237-3333 | fax:218-237-3377



\$285,000
MLS 6604088 Residential
1124 Summit Avenue
Detroit Lakes MN 56501



website: www.AffinityRealEstate.com | email: info@affinityrealestate.com | office: 218-237-3333 | fax:218-237-3377

Affinity
REAL ESTATE INC

\$285,000
MLS 6604088 Residential
1124 Summit Avenue
Detroit Lakes MN 56501



website: www.AffinityRealEstate.com | email: info@affinityrealestate.com | office: 218-237-3333 | fax:218-237-3377



\$285,000
MLS 6604088 Residential
1124 Summit Avenue
Detroit Lakes MN 56501



website: www.AffinityRealEstate.com | email: info@affinityrealestate.com | office: 218-237-3333 | fax:218-237-3377

Affinity
REAL ESTATE INC

\$285,000
MLS 6604088 Residential
1124 Summit Avenue
Detroit Lakes MN 56501



website: www.AffinityRealEstate.com | email: info@affinityrealestate.com | office: 218-237-3333 | fax: 218-237-3377

Affinity
REAL ESTATE INC

\$285,000
MLS 6604088 Residential
1124 Summit Avenue
Detroit Lakes MN 56501



website: www.AffinityRealEstate.com | email: info@affinityrealestate.com | office: 218-237-3333 | fax:218-237-3377

Affinity
REAL ESTATE INC

\$285,000
MLS 6604088 Residential
1124 Summit Avenue
Detroit Lakes MN 56501