



MLS 6604099 Residential

**\$654,000**

5,368 sq ft  
5 bedrooms  
4 baths

4203 Parkway Drive  
Nisswa MN 56468

Status: Active

**Description:**

This beautiful five-bedroom, four-bathroom home, complete with an office, sits on over 2.5 acres of meticulously manicured landscape in a peaceful Nisswa location. Perfect for entertaining, the home features a large deck and a full walkout basement patio with stunning views of the surrounding area. Inside, the spacious kitchen offers quartz countertops, stainless steel appliances, and flows seamlessly into expansive living areas. The bedrooms are generously sized, providing comfort and privacy for family and guests. The property includes both a an oversized two-stall attached garage and a two-stall detached garage, the latter featuring an unfinished bonus room above, ready for your personal touch. Situated near championship golf courses and surrounded by fine dining and entertainment options, this home is an ideal retreat for those seeking luxury, space, and tranquility in the heart of Nisswa. Schedule your showing today.

**Additional Details:**

Year Built	2005
Lot Acres	2.64
Lot Dimensions	401x333
Garage Stalls	4
School District	181
Taxes	\$4,752
Taxes with Assessments	\$4,752
Tax Year	2023

**Additional Features:**

**Basement:** Finished, Full, Walkout **Fuel:** Natural Gas **Garage:** 4 **Heat:** Forced Air **Sewer:** Private Sewer, Tank with Drainage Field **Water:** Drilled, Well **Air Conditioning:** Central Air

**Driving Directions:**

From MN Highway 371, west on Edna Lake Rd to left on Parkway Dr.



Listed By:  
eXp Realty

Affinity Real Estate Inc. participates in the Regional Multiple Listing Service of Minnesota, Inc Broker Reciprocity (sm) program, allowing us to display other broker's listings on our website. All properties are subject to prior sale, change or withdrawal.



Call Affinity Real Estate

**218-237-3333**

[info@affinityrealestate.com](mailto:info@affinityrealestate.com)



Affinity Real Estate - 600 Park Avenue South - Park Rapids MN 56470



website: [www.AffinityRealEstate.com](http://www.AffinityRealEstate.com) | email: [info@affinityrealestate.com](mailto:info@affinityrealestate.com) | office: 218-237-3333 | fax:218-237-3377



**\$654,000**  
MLS 6604099 Residential  
4203 Parkway Drive  
Nisswa MN 56468



website: [www.AffinityRealEstate.com](http://www.AffinityRealEstate.com) | email: [info@affinityrealestate.com](mailto:info@affinityrealestate.com) | office: 218-237-3333 | fax: 218-237-3377

**Affinity**  
REAL ESTATE INC

**\$654,000**  
MLS 6604099 Residential  
4203 Parkway Drive  
Nisswa MN 56468



website: [www.AffinityRealEstate.com](http://www.AffinityRealEstate.com) | email: [info@affinityrealestate.com](mailto:info@affinityrealestate.com) | office: 218-237-3333 | fax: 218-237-3377

**Affinity**  
REAL ESTATE INC

**\$654,000**  
MLS 6604099 Residential  
4203 Parkway Drive  
Nisswa MN 56468



website: [www.AffinityRealEstate.com](http://www.AffinityRealEstate.com) | email: [info@affinityrealestate.com](mailto:info@affinityrealestate.com) | office: 218-237-3333 | fax:218-237-3377



**\$654,000**  
MLS 6604099 Residential  
4203 Parkway Drive  
Nisswa MN 56468



website: [www.AffinityRealEstate.com](http://www.AffinityRealEstate.com) | email: [info@affinityrealestate.com](mailto:info@affinityrealestate.com) | office: 218-237-3333 | fax:218-237-3377

**Affinity**  
REAL ESTATE INC

**\$654,000**  
MLS 6604099 Residential  
4203 Parkway Drive  
Nisswa MN 56468



website: [www.AffinityRealEstate.com](http://www.AffinityRealEstate.com) | email: [info@affinityrealestate.com](mailto:info@affinityrealestate.com) | office: 218-237-3333 | fax:218-237-3377

**Affinity**  
REAL ESTATE INC

**\$654,000**  
MLS 6604099 Residential  
4203 Parkway Drive  
Nisswa MN 56468



website: [www.AffinityRealEstate.com](http://www.AffinityRealEstate.com) | email: [info@affinityrealestate.com](mailto:info@affinityrealestate.com) | office: 218-237-3333 | fax:218-237-3377

**Affinity**  
REAL ESTATE INC

**\$654,000**  
MLS 6604099 Residential  
4203 Parkway Drive  
Nisswa MN 56468





website: [www.AffinityRealEstate.com](http://www.AffinityRealEstate.com) | email: [info@affinityrealestate.com](mailto:info@affinityrealestate.com) | office: 218-237-3333 | fax:218-237-3377

**Affinity**  
REAL ESTATE INC

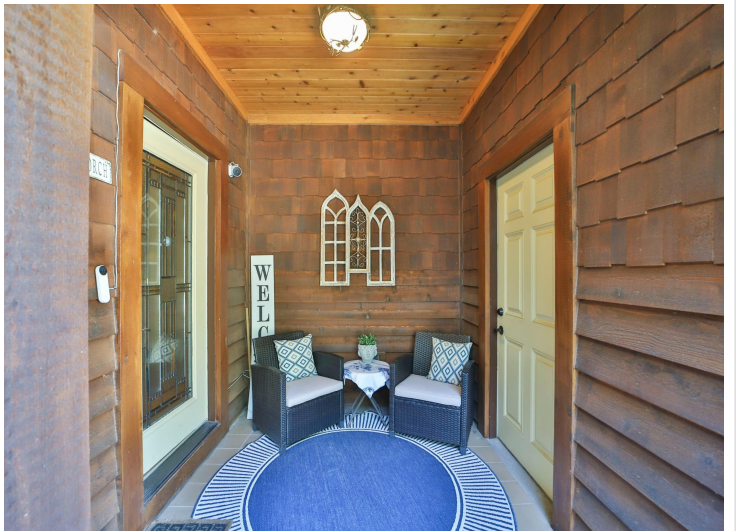
**\$654,000**  
MLS 6604099 Residential  
4203 Parkway Drive  
Nisswa MN 56468



website: [www.AffinityRealEstate.com](http://www.AffinityRealEstate.com) | email: [info@affinityrealestate.com](mailto:info@affinityrealestate.com) | office: 218-237-3333 | fax:218-237-3377

**Affinity**  
REAL ESTATE INC

**\$654,000**  
MLS 6604099 Residential  
4203 Parkway Drive  
Nisswa MN 56468



website: [www.AffinityRealEstate.com](http://www.AffinityRealEstate.com) | email: [info@affinityrealestate.com](mailto:info@affinityrealestate.com) | office: 218-237-3333 | fax:218-237-3377

**Affinity**  
REAL ESTATE INC

**\$654,000**  
MLS 6604099 Residential  
4203 Parkway Drive  
Nisswa MN 56468



website: [www.AffinityRealEstate.com](http://www.AffinityRealEstate.com) | email: [info@affinityrealestate.com](mailto:info@affinityrealestate.com) | office: 218-237-3333 | fax: 218-237-3377

**Affinity**  
REAL ESTATE INC

**\$654,000**  
MLS 6604099 Residential  
4203 Parkway Drive  
Nisswa MN 56468



website: [www.AffinityRealEstate.com](http://www.AffinityRealEstate.com) | email: [info@affinityrealestate.com](mailto:info@affinityrealestate.com) | office: 218-237-3333 | fax:218-237-3377

**Affinity**  
REAL ESTATE INC

**\$654,000**  
MLS 6604099 Residential  
4203 Parkway Drive  
Nisswa MN 56468



website: [www.AffinityRealEstate.com](http://www.AffinityRealEstate.com) | email: [info@affinityrealestate.com](mailto:info@affinityrealestate.com) | office: 218-237-3333 | fax:218-237-3377



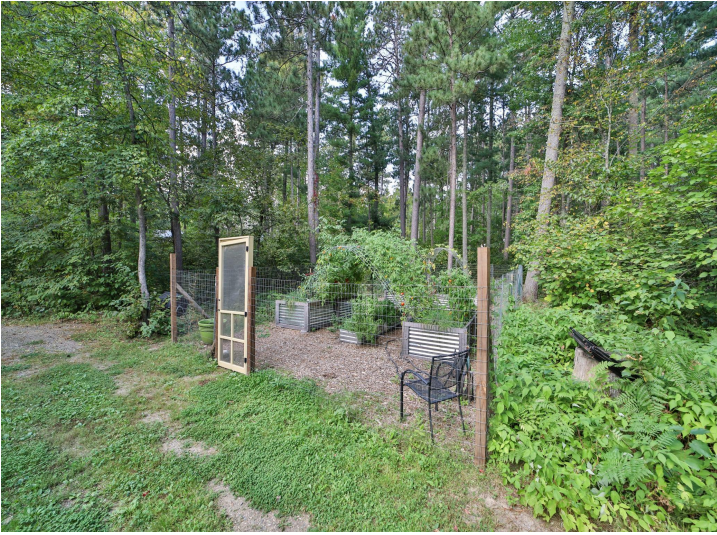
**\$654,000**  
MLS 6604099 Residential  
4203 Parkway Drive  
Nisswa MN 56468



website: [www.AffinityRealEstate.com](http://www.AffinityRealEstate.com) | email: [info@affinityrealestate.com](mailto:info@affinityrealestate.com) | office: 218-237-3333 | fax:218-237-3377



**\$654,000**  
MLS 6604099 Residential  
4203 Parkway Drive  
Nisswa MN 56468



website: [www.AffinityRealEstate.com](http://www.AffinityRealEstate.com) | email: [info@affinityrealestate.com](mailto:info@affinityrealestate.com) | office: 218-237-3333 | fax:218-237-3377



**\$654,000**  
MLS 6604099 Residential  
4203 Parkway Drive  
Nisswa MN 56468