



MLS 6604408 Land

**\$74,999**

2 Acres  
Other

301 Clark Drive  
Verndale MN 56481

Status: Active

**Description:**

Prime commercial opportunity! This 2-acre lot, situated on a major highway, offers exceptional exposure and high visibility for any business venture. Located in a growing area, the property provides ample space for development, making it ideal for retail, service industries, or office space. With easy access for both local and highway traffic, this commercial lot is perfectly positioned to attract customers and grow your business. Don't miss this rare opportunity to invest in a property with endless potential and unbeatable location! Schedule your showing today before it's too late!

**Additional Details:**

Lot Acres	2
Lot Dimensions	TBD
School District	818
Taxes	\$410
Taxes with Assessments	\$410
Tax Year	2024

**Additional Features:**

**Driving Directions:**

1/4 Mile east of Verndale on north side of HWY 10



Listed By:  
Coldwell Banker Realty

Affinity Real Estate Inc. participates in the Regional Multiple Listing Service of Minnesota, Inc Broker Reciprocity (sm) program, allowing us to display other broker's listings on our website. All properties are subject to prior sale, change or withdrawal.



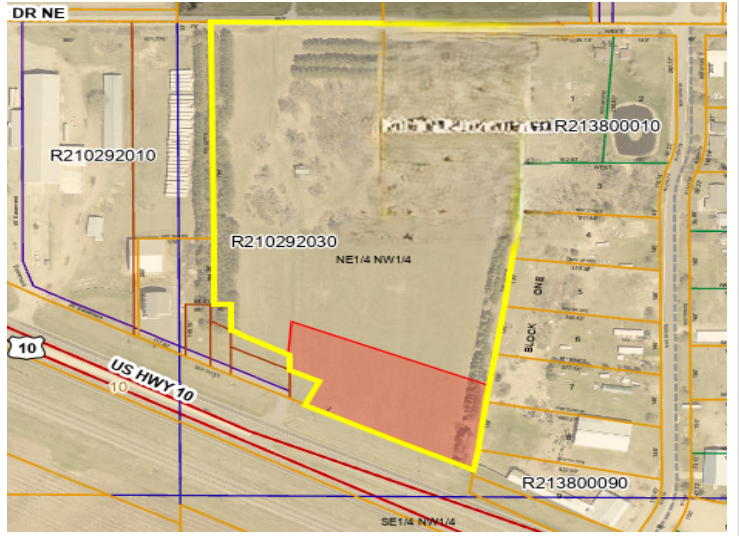
**Call Affinity Real Estate**

**218-237-3333**

**info@affinityrealestate.com**



**Affinity Real Estate - 600 Park Avenue South - Park Rapids MN 56470**



website: [www.AffinityRealEstate.com](http://www.AffinityRealEstate.com) | email: [info@affinityrealestate.com](mailto:info@affinityrealestate.com) | office: 218-237-3333 | fax:218-237-3377



**\$74,999**  
MLS 6604408 Land  
301 Clark Drive  
Verndale MN 56481