



MLS 6604815 Land

\$399,900

1.5 Acres
Other

TBD Clamshell Drive
Pequot Lakes MN 56472

Status: Active

Description:

Don't miss this storage / garage which is partially heated and feature an office, bath and totals 7,620 square feet in size. There is a ton of potential with the property. This is a must see.

Additional Details:

Lot Acres	1.5
Lot Dimensions	TBD
School District	186
Taxes	\$3,478
Taxes with Assessments	\$3,478
Tax Year	2023

Additional Features:

Driving Directions:

From Crosslake - South on #66 to West on #103 to North on #39 to West on #16 to Right on S Clamshell Drive, to home on Left.



Listed By:
eXp Realty

Affinity Real Estate Inc. participates in the Regional Multiple Listing Service of Minnesota, Inc Broker Reciprocity (sm) program, allowing us to display other broker's listings on our website. All properties are subject to prior sale, change or withdrawal.



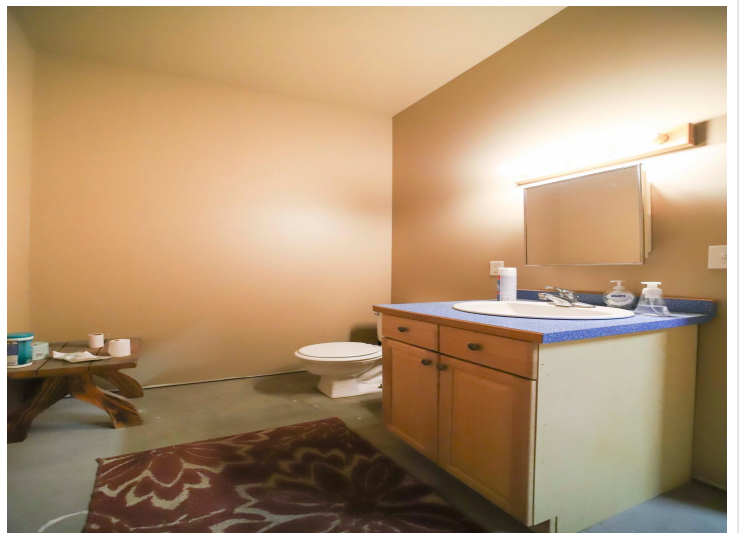
Call Affinity Real Estate

218-237-3333

info@affinityrealestate.com



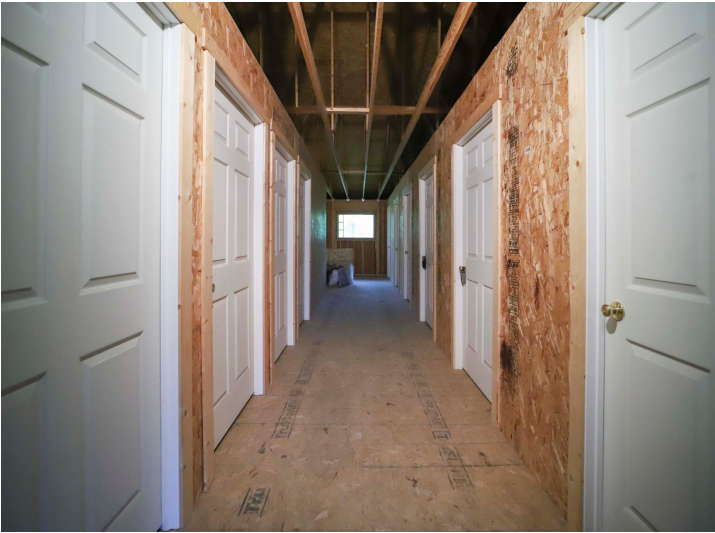
Affinity Real Estate - 600 Park Avenue South - Park Rapids MN 56470



website: www.AffinityRealEstate.com | email: info@affinityrealestate.com | office: 218-237-3333 | fax:218-237-3377

Affinity
REAL ESTATE INC

\$399,900
MLS 6604815 Land
TBD Clamshell Drive
Pequot Lakes MN 56472



website: www.AffinityRealEstate.com | email: info@affinityrealestate.com | office: 218-237-3333 | fax:218-237-3377

Affinity
REAL ESTATE INC

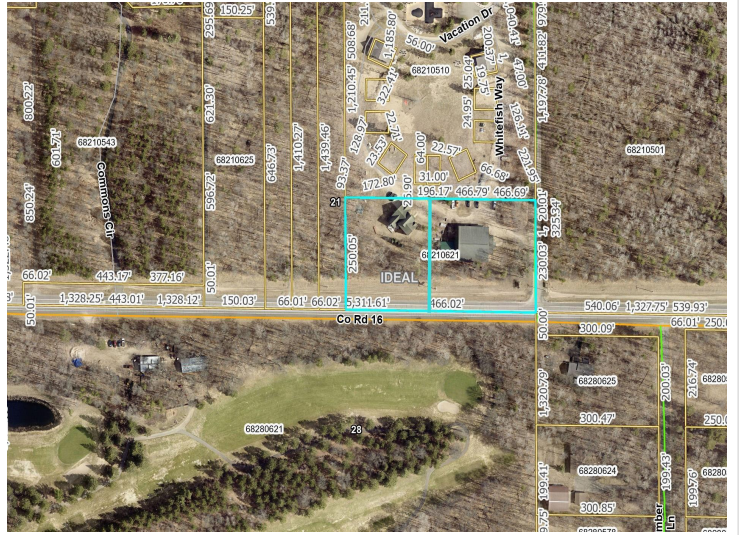
\$399,900
MLS 6604815 Land
TBD Clamshell Drive
Pequot Lakes MN 56472



website: www.AffinityRealEstate.com | email: info@affinityrealestate.com | office: 218-237-3333 | fax:218-237-3377



\$399,900
MLS 6604815 Land
TBD Clamshell Drive
Pequot Lakes MN 56472



website: www.AffinityRealEstate.com | email: info@affinityrealestate.com | office: 218-237-3333 | fax:218-237-3377



\$399,900
MLS 6604815 Land
TBD Clamshell Drive
Pequot Lakes MN 56472