



MLS 6605000 Residential Income

**\$749,000**

**Description:**

Exquisite duplex home nestled on the scenic north shore of Big Pine Lake in Perham, MN. The upper unit offers 2 bedrooms and 2 bathrooms, while the lower unit provides 2 bedrooms and 1 bathroom with direct access to the backyard and beach. Revel in the stunning southern exposure and plentiful natural light in this lakeside sanctuary. Located in a desirable neighborhood, this property is conveniently accessible off Highway 10, perfectly situated between Fargo, ND, and Minneapolis, MN. This home is located about 1/2 mile from the public boat ramp.

**Additional Details:**

Year Built	2020
Lot Acres	0.8
Lot Dimensions	100x300
Garage Stalls	2
School District	549
Taxes	\$4,310
Taxes with Assessments	\$4,310
Tax Year	2024

**Additional Features:**

**Fuel:** Natural Gas **Heat:** Forced Air

**Driving Directions:**

from Perham, MN travel east on hwy 10 2.1 miles, turn left onto Minnesota St and travel 2.8 miles to CR-53, travel 2.9 miles around Big Pine Lake to Royal Pine rd then turn left for 250 feet. destination is on left.



Listed By:  
eXp Realty (3523 FGO)

Affinity Real Estate Inc. participates in the Regional Multiple Listing Service of Minnesota, Inc Broker Reciprocity (sm) program, allowing us to display other broker's listings on our website. All properties are subject to prior sale, change or withdrawal.



**Call Affinity Real Estate**

**218-237-3333**

**info@affinityrealestate.com**



**Affinity Real Estate - 600 Park Avenue South - Park Rapids MN 56470**





website: [www.AffinityRealEstate.com](http://www.AffinityRealEstate.com) | email: [info@affinityrealestate.com](mailto:info@affinityrealestate.com) | office: 218-237-3333 | fax:218-237-3377

**Affinity**  
REAL ESTATE INC

**\$749,000**  
MLS 6605000 Residential  
Income  
49849 Royal Pine Road  
Perham MN 56573





website: [www.AffinityRealEstate.com](http://www.AffinityRealEstate.com) | email: [info@affinityrealestate.com](mailto:info@affinityrealestate.com) | office: 218-237-3333 | fax: 218-237-3377

**Affinity**  
REAL ESTATE INC

**\$749,000**  
MLS 6605000 Residential  
Income  
49849 Royal Pine Road  
Perham MN 56573



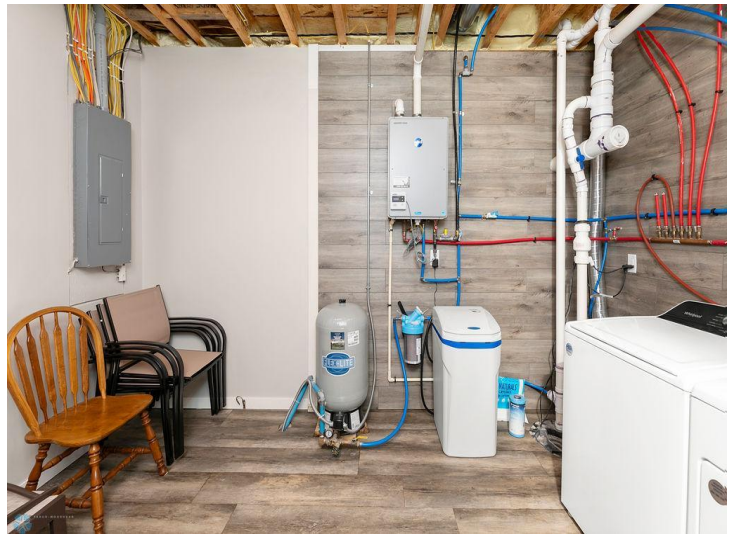


website: [www.AffinityRealEstate.com](http://www.AffinityRealEstate.com) | email: [info@affinityrealestate.com](mailto:info@affinityrealestate.com) | office: 218-237-3333 | fax: 218-237-3377

**Affinity**  
REAL ESTATE INC

**\$749,000**  
MLS 6605000 Residential  
Income  
49849 Royal Pine Road  
Perham MN 56573



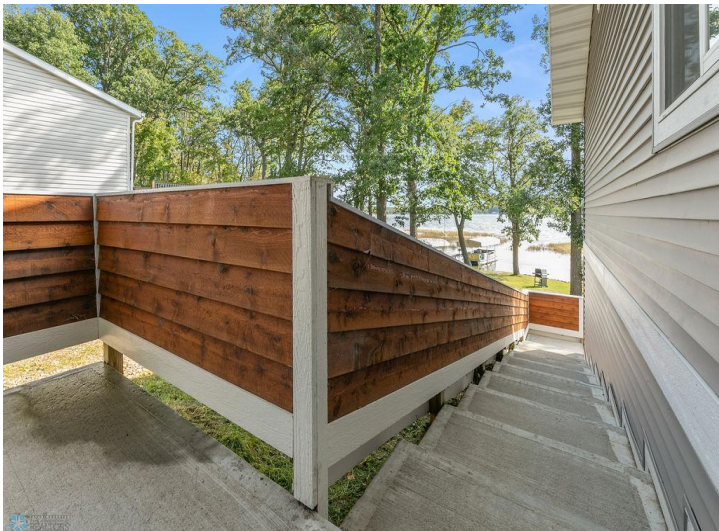


website: [www.AffinityRealEstate.com](http://www.AffinityRealEstate.com) | email: [info@affinityrealestate.com](mailto:info@affinityrealestate.com) | office: 218-237-3333 | fax:218-237-3377



**\$749,000**  
MLS 6605000 Residential  
Income  
49849 Royal Pine Road  
Perham MN 56573





website: [www.AffinityRealEstate.com](http://www.AffinityRealEstate.com) | email: [info@affinityrealestate.com](mailto:info@affinityrealestate.com) | office: 218-237-3333 | fax: 218-237-3377

**Affinity**  
REAL ESTATE INC

**\$749,000**  
MLS 6605000 Residential  
Income  
49849 Royal Pine Road  
Perham MN 56573





website: [www.AffinityRealEstate.com](http://www.AffinityRealEstate.com) | email: [info@affinityrealestate.com](mailto:info@affinityrealestate.com) | office: 218-237-3333 | fax:218-237-3377



**\$749,000**  
MLS 6605000 Residential  
Income  
49849 Royal Pine Road  
Perham MN 56573





website: [www.AffinityRealEstate.com](http://www.AffinityRealEstate.com) | email: [info@affinityrealestate.com](mailto:info@affinityrealestate.com) | office: 218-237-3333 | fax:218-237-3377



**\$749,000**  
MLS 6605000 Residential  
Income  
49849 Royal Pine Road  
Perham MN 56573



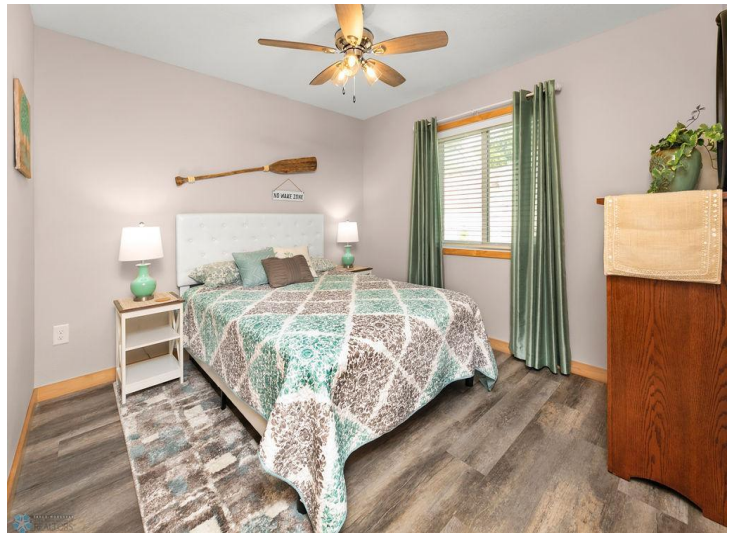


website: [www.AffinityRealEstate.com](http://www.AffinityRealEstate.com) | email: [info@affinityrealestate.com](mailto:info@affinityrealestate.com) | office: 218-237-3333 | fax:218-237-3377



**\$749,000**  
MLS 6605000 Residential  
Income  
49849 Royal Pine Road  
Perham MN 56573



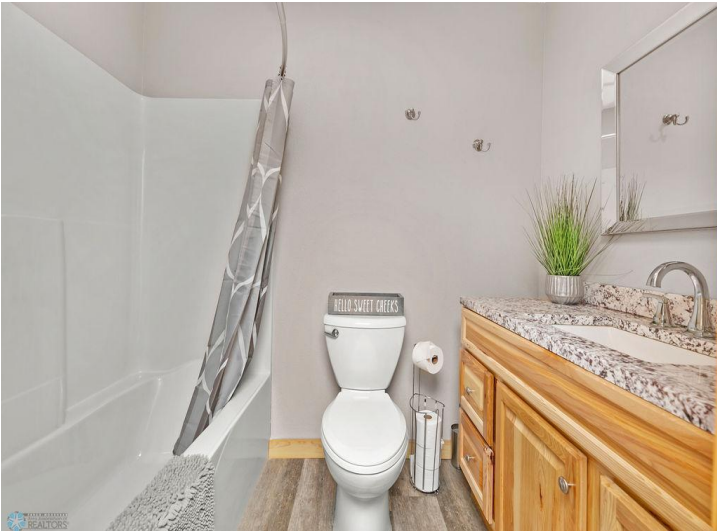


website: [www.AffinityRealEstate.com](http://www.AffinityRealEstate.com) | email: [info@affinityrealestate.com](mailto:info@affinityrealestate.com) | office: 218-237-3333 | fax:218-237-3377



**\$749,000**  
MLS 6605000 Residential  
Income  
49849 Royal Pine Road  
Perham MN 56573





website: [www.AffinityRealEstate.com](http://www.AffinityRealEstate.com) | email: [info@affinityrealestate.com](mailto:info@affinityrealestate.com) | office: 218-237-3333 | fax: 218-237-3377

**Affinity**  
REAL ESTATE INC

**\$749,000**  
MLS 6605000 Residential  
Income  
49849 Royal Pine Road  
Perham MN 56573





website: [www.AffinityRealEstate.com](http://www.AffinityRealEstate.com) | email: [info@affinityrealestate.com](mailto:info@affinityrealestate.com) | office: 218-237-3333 | fax:218-237-3377

**Affinity**  
REAL ESTATE INC

**\$749,000**  
MLS 6605000 Residential  
Income  
49849 Royal Pine Road  
Perham MN 56573





website: [www.AffinityRealEstate.com](http://www.AffinityRealEstate.com) | email: [info@affinityrealestate.com](mailto:info@affinityrealestate.com) | office: 218-237-3333 | fax: 218-237-3377

**Affinity**  
REAL ESTATE INC

**\$749,000**  
MLS 6605000 Residential  
Income  
49849 Royal Pine Road  
Perham MN 56573





website: [www.AffinityRealEstate.com](http://www.AffinityRealEstate.com) | email: [info@affinityrealestate.com](mailto:info@affinityrealestate.com) | office: 218-237-3333 | fax:218-237-3377

**Affinity**  
REAL ESTATE INC

**\$749,000**  
MLS 6605000 Residential  
Income  
49849 Royal Pine Road  
Perham MN 56573





website: [www.AffinityRealEstate.com](http://www.AffinityRealEstate.com) | email: [info@affinityrealestate.com](mailto:info@affinityrealestate.com) | office: 218-237-3333 | fax: 218-237-3377



**\$749,000**  
MLS 6605000 Residential  
Income  
49849 Royal Pine Road  
Perham MN 56573