



MLS 6605236 Land

\$16,000

0.62 Acres
Raw Land

L23 B32 Shady Trail
Breezy Point MN 56472

Status: Active



Description:

Located in a quiet neighborhood, a nicely wooded .62 acre Lot a short golf cart ride to Breezy Point Resort. Ready for your dream home or get away cabin to be built. Situated in Pequot Lakes school district. Close to championship golf courses, many public accesses to surrounding lakes, public sand beach, playground, fine dining and great shopping. Come take a look.

Additional Details:

Lot Acres	0.62
Lot Dimensions	120'x241'x123'x209'
School District	186
Taxes	\$62
Taxes with Assessments	\$62
Tax Year	2024

Additional Features:

Driving Directions:

From the gates of Breezy Point Resort go North on CR11 to Lt on Ski Chalet Dr to Rt on Four Seasons Place - Lt on Shady Trl to For Sale sign on Rt



Listed By:
Edina Realty, Inc.

Affinity Real Estate Inc. participates in the Regional Multiple Listing Service of Minnesota, Inc Broker Reciprocity (sm) program, allowing us to display other broker's listings on our website. All properties are subject to prior sale, change or withdrawal.



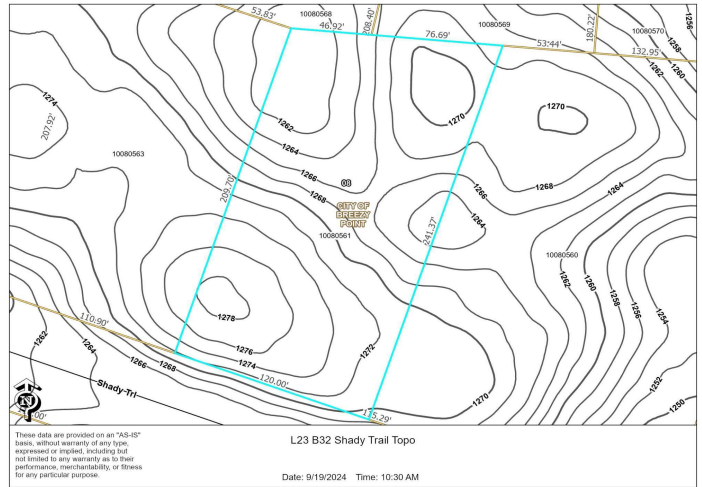
Call Affinity Real Estate

218-237-3333

info@affinityrealestate.com



Affinity Real Estate - 600 Park Avenue South - Park Rapids MN 56470



website: www.AffinityRealEstate.com | email: info@affinityrealestate.com | office: 218-237-3333 | fax: 218-237-3377



\$16,000
 MLS 6605236 Land
 L23 B32 Shady Trail
 Breezy Point MN 56472



website: www.AffinityRealEstate.com | email: info@affinityrealestate.com | office: 218-237-3333 | fax:218-237-3377



\$16,000
MLS 6605236 Land
L23 B32 Shady Trail
Breezy Point MN 56472



website: www.AffinityRealEstate.com | email: info@affinityrealestate.com | office: 218-237-3333 | fax:218-237-3377



\$16,000
MLS 6605236 Land
L23 B32 Shady Trail
Breezy Point MN 56472