



MLS 6605559 Land

\$39,900

5.5 Acres
Raw Land

TBD Sunset Avenue
Bagley MN 56621

Status: Active

Description:

Prime 5 1/2 acre parcel of land in the city limits of Bagley! This would make a great building site with lots of elbow room! Good access off Sunset Ave and huge open area making for easy prep work for building!

Additional Details:

Lot Acres	5.5
Lot Dimensions	105x2281
School District	162
Taxes	\$1
Taxes with Assessments	\$1
Tax Year	2024

Additional Features:

Driving Directions:

Hwy 2 to north on Sunset Ave, property access is on the left.



Listed By:
Realty Experts, LLC

Affinity Real Estate Inc. participates in the Regional Multiple Listing Service of Minnesota, Inc Broker Reciprocity (sm) program, allowing us to display other broker's listings on our website. All properties are subject to prior sale, change or withdrawal.



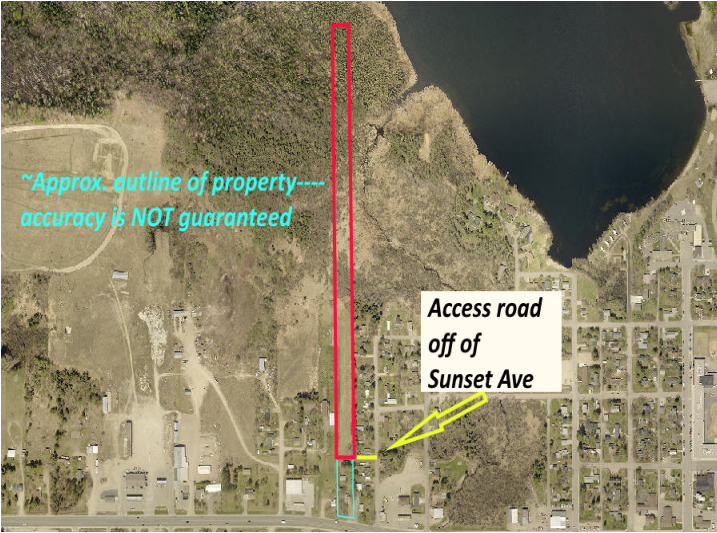
Call Affinity Real Estate

218-237-3333

info@affinityrealestate.com



Affinity Real Estate - 600 Park Avenue South - Park Rapids MN 56470



website: www.AffinityRealEstate.com | email: info@affinityrealestate.com | office: 218-237-3333 | fax:218-237-3377



\$39,900

MLS 6605559 Land
TBD Sunset Avenue
Bagley MN 56621