



MLS 6605563 Land

\$18,000

1 Acres
Other

TBD Clark Drive
Wadena MN 56481

Status: Active

Description:

This spacious 1-acre corner lot on the outskirts of town offers the perfect balance of rural tranquility and the conveniences of a growing community. With plenty of room to build your dream, this prime property provides both privacy and easy access to town amenities. Whether you're looking for a peaceful retreat or a smart investment in an expanding area, this lot presents an ideal opportunity. Don't miss out on the chance to secure your place in this up-and-coming community! Schedule your showing today!

Additional Details:

Lot Acres	1
Lot Dimensions	TBD
School District	818
Taxes	\$410
Taxes with Assessments	\$410
Tax Year	2024

Additional Features:

Driving Directions:

East side of the city of Verndale off of Hwy 10 go North on NE Clark Dr 1/4 mile. Property will be on the right.



Listed By:
Coldwell Banker Realty

Affinity Real Estate Inc. participates in the Regional Multiple Listing Service of Minnesota, Inc Broker Reciprocity (sm) program, allowing us to display other broker's listings on our website. All properties are subject to prior sale, change or withdrawal.



Call Affinity Real Estate

218-237-3333

info@affinityrealestate.com



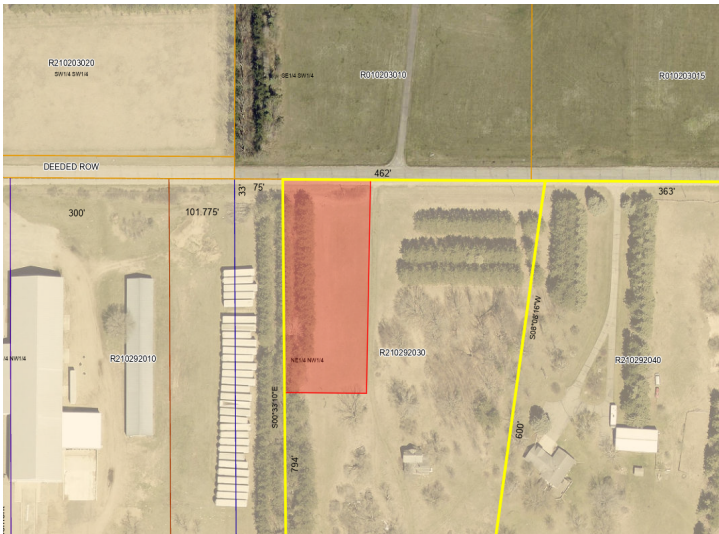
Affinity Real Estate - 600 Park Avenue South - Park Rapids MN 56470



website: www.AffinityRealEstate.com | email: info@affinityrealestate.com | office: 218-237-3333 | fax:218-237-3377



\$18,000
MLS 6605563 Land
TBD Clark Drive
Wadena MN 56481



website: www.AffinityRealEstate.com | email: info@affinityrealestate.com | office: 218-237-3333 | fax:218-237-3377



\$18,000
MLS 6605563 Land
TBD Clark Drive
Wadena MN 56481