



MLS 6606081 Lake Land

**\$99,999**

**Description:**

Enjoy a peaceful & private setting on Little Hattie Lake with gradual elevation leading to 175ft of natural frontage. Little Hattie has a channel that also connect to Lake Hattie offering even more opportunities for boating, kayaking, canoeing, and excellent fishing. Build your dream home/cabin or simply bring your RV and start enjoying life at the lake.

**Additional Details:**

Lot Acres	1.34
Lot Dimensions	175x372x177x376
School District	2174
Taxes	\$186
Taxes with Assessments	\$186
Tax Year	2024

**Additional Features:**

**Driving Directions:**

From Backus(Godfrey's) go East on State 87 6.2 miles to right on 20th for 1.5 miles to right on County 118. Continue .3 miles to 361(mapping purposes) and property on left. Subject property is located next to 361.



Listed By:  
Rusty's Up North Realty

Affinity Real Estate Inc. participates in the Regional Multiple Listing Service of Minnesota, Inc Broker Reciprocity (sm) program, allowing us to display other broker's listings on our website. All properties are subject to prior sale, change or withdrawal.



**Call Affinity Real Estate**

**218-237-3333**

**info@affinityrealestate.com**



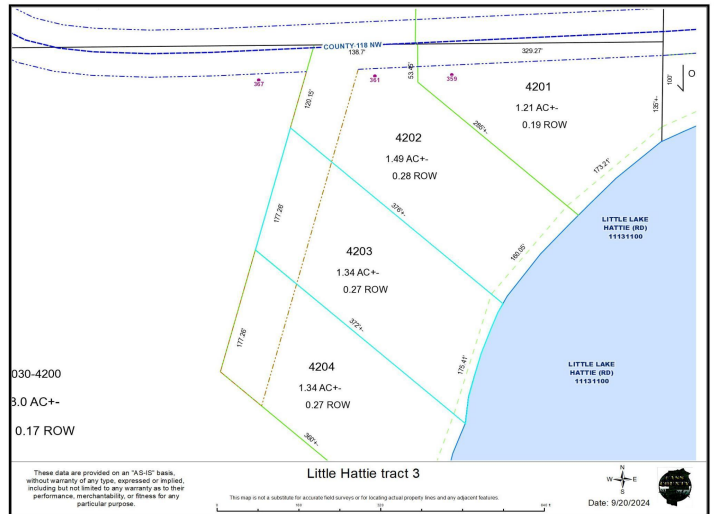
**Affinity Real Estate - 600 Park Avenue South - Park Rapids MN 56470**



website: [www.AffinityRealEstate.com](http://www.AffinityRealEstate.com) | email: [info@affinityrealestate.com](mailto:info@affinityrealestate.com) | office: 218-237-3333 | fax:218-237-3377



**\$99,999**  
MLS 6606081 Lake Land  
xxx County 118 Road  
Backus MN 56435



website: [www.AffinityRealEstate.com](http://www.AffinityRealEstate.com) | email: [info@affinityrealestate.com](mailto:info@affinityrealestate.com) | office: 218-237-3333 | fax: 218-237-3377



**\$99,999**  
MLS 6606081 Lake Land  
xxx County 118 Road  
Backus MN 56435