



MLS 6606205 Lake Home

\$680,000

1,594 sq ft
3 bedrooms
2 baths

7983 County Road 127
Brainerd MN 56401

Waterfront: North Long

Status: Active



Description:

Rare find on North Long Lake! Built in 1998 and thoughtfully expanded in 2015, this updated lake home offers modern comfort with Up North charm. The spacious primary suite includes a walk-in tile shower, walk-in closet, and private access to the lakeside deck. The open-concept layout features updated vinyl plank flooring and all-new windows throughout the home. LP SmartSide siding, newer roofs, gas fireplace, forced air furnace and A/C ensure low maintenance and year-round comfort. Enjoy 1.99 acres of flat, private land with easy access on paved roads. Dock, pontoon lift, and furnishings may be included with an acceptable offer! Just minutes from shopping, dining, golf, and Brainerd International Raceway—this is a perfect retreat or full-time home. North Long Lake offers great fishing, boating, and swimming in crystal-clear water. Come relax, recharge, and enjoy life at the lake!

Additional Details:

Year Built	1998
Lot Acres	1.99
Lot Dimensions	146 x 679 x 120 x 709
Garage Stalls	3
School District	181
Taxes	\$3,158
Taxes with Assessments	\$3,158
Tax Year	2024

Additional Features:

Basement: Crawl Space, Unfinished **Fuel:** Natural Gas **Garage:** 3 **Heat:** Forced Air **Sewer:** Private Sewer, Tank with Drainage Field
Water: Drilled, Private, Well **Air Conditioning:** Central Air

Driving Directions:

371 North to Ojibwe Road; East (Right) to CR 127; East on 127 (Right) Aprox 1.6 Miles to Home On Right. Family Cabin Sign "Cronin"



Listed By:
Keller Williams Classic Realty

Affinity Real Estate Inc. participates in the Regional Multiple Listing Service of Minnesota, Inc Broker Reciprocity (sm) program, allowing us to display other broker's listings on our website. All properties are subject to prior sale, change or withdrawal.



Call Affinity Real Estate

218-237-3333

info@affinityrealestate.com



Affinity Real Estate - 600 Park Avenue South - Park Rapids MN 56470



website: www.AffinityRealEstate.com | email: info@affinityrealestate.com | office: 218-237-3333 | fax: 218-237-3377

Affinity
REAL ESTATE INC

\$680,000

MLS 6606205 Lake Home
7983 County Road 127
Brainerd MN 56401



website: www.AffinityRealEstate.com | email: info@affinityrealestate.com | office: 218-237-3333 | fax: 218-237-3377

Affinity
REAL ESTATE INC

\$680,000

MLS 6606205 Lake Home
7983 County Road 127
Brainerd MN 56401



website: www.AffinityRealEstate.com | email: info@affinityrealestate.com | office: 218-237-3333 | fax: 218-237-3377

Affinity
REAL ESTATE INC

\$680,000

MLS 6606205 Lake Home
7983 County Road 127
Brainerd MN 56401



website: www.AffinityRealEstate.com | email: info@affinityrealestate.com | office: 218-237-3333 | fax: 218-237-3377

Affinity
REAL ESTATE INC

\$680,000
MLS 6606205 Lake Home
7983 County Road 127
Brainerd MN 56401



website: www.AffinityRealEstate.com | email: info@affinityrealestate.com | office: 218-237-3333 | fax: 218-237-3377

Affinity
REAL ESTATE INC

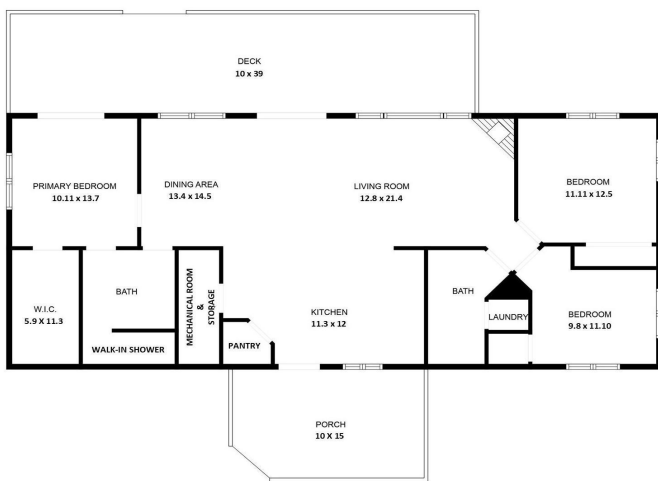
\$680,000
MLS 6606205 Lake Home
7983 County Road 127
Brainerd MN 56401



website: www.AffinityRealEstate.com | email: info@affinityrealestate.com | office: 218-237-3333 | fax: 218-237-3377



\$680,000
MLS 6606205 Lake Home
7983 County Road 127
Brainerd MN 56401



website: www.AffinityRealEstate.com | email: info@affinityrealestate.com | office: 218-237-3333 | fax: 218-237-3377



\$680,000
 MLS 6606205 Lake Home
 7983 County Road 127
 Brainerd MN 56401



website: www.AffinityRealEstate.com | email: info@affinityrealestate.com | office: 218-237-3333 | fax: 218-237-3377



\$680,000
MLS 6606205 Lake Home
7983 County Road 127
Brainerd MN 56401