



MLS 6606354 Land

\$225,000

21.1 Acres
Raw Land

TBD 26th Avenue
Backus MN 56474

Status: Active

Description:

On the North edge of Pine River you will find this 21+ acres of rolling high ground studded with mature Pines and open level field! Property boasts an excellent opportunity for Residential or Commercial development, or both for those with the vision to split this parcel along the wood line! Frontage on both 26th Ave SW and Hwy 371 offers either a quiet entrance for housing development or private home via 425' of frontage on 26th Ave SW or direct access with excellent traffic visibility via 474' of frontage on Hwy 371 for commercial or industrial ventures! Current zoning allows residential new splits down to 1 acre minimum! Land parcels this size and location are hard to find these days! Don't let this opportunity slip by!

Additional Details:

Lot Acres	21.1
Lot Dimensions	Irregular
School District	2174
Taxes	\$282
Taxes with Assessments	\$282
Tax Year	2024

Additional Features:

Driving Directions:

From Pine River Stoplights- North on Hwy 371 just outside of town to Right on 26th Ave SW to property on Left. Alternately there is access directly from Hwy 371 at Fire #2042.



Listed By:
Positive Realty

Affinity Real Estate Inc. participates in the Regional Multiple Listing Service of Minnesota, Inc Broker Reciprocity (sm) program, allowing us to display other broker's listings on our website. All properties are subject to prior sale, change or withdrawal.



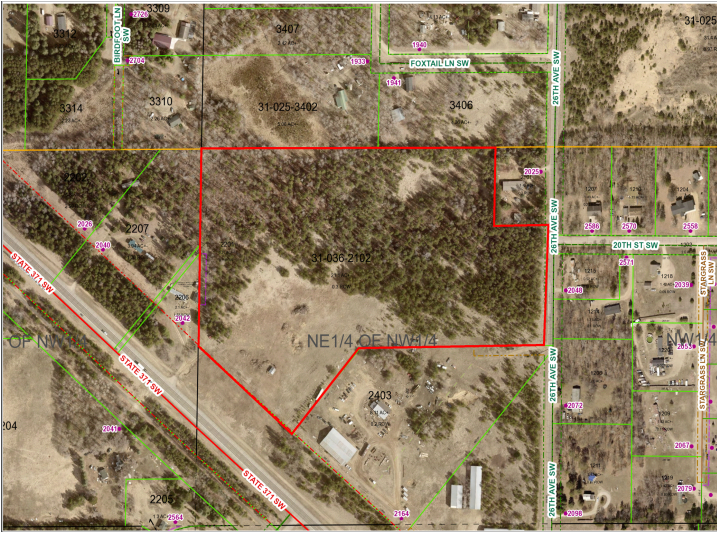
Call Affinity Real Estate

218-237-3333

info@affinityrealestate.com



Affinity Real Estate - 600 Park Avenue South - Park Rapids MN 56470



website: www.AffinityRealEstate.com | email: info@affinityrealestate.com | office: 218-237-3333 | fax: 218-237-3377

Affinity
REAL ESTATE INC

\$225,000
MLS 6606354 Land
TBD 26th Avenue
Backus MN 56474



website: www.AffinityRealEstate.com | email: info@affinityrealestate.com | office: 218-237-3333 | fax:218-237-3377

Affinity
REAL ESTATE INC

\$225,000
MLS 6606354 Land
TBD 26th Avenue
Backus MN 56474



website: www.AffinityRealEstate.com | email: info@affinityrealestate.com | office: 218-237-3333 | fax:218-237-3377



\$225,000
MLS 6606354 Land
TBD 26th Avenue
Backus MN 56474