



MLS 6606886 Land

\$249,900

98 Acres
Raw Land

Tract 1 Brietbach Road
Park Rapids MN 56470

Status: Active

Description:

98 Acres +/- of Recreational Land in the Park Rapids, Minnesota area. Escape to your own slice of paradise with this stunning 98-acre recreational property, perfectly situated in the heart of Minnesota. This diverse landscape offers an abundance of outdoor activities, making it an ideal retreat for nature lovers, hunters, & adventure seekers alike. **Hunting & Wildlife:** Experience exceptional hunting opportunities. The property connects to Minnesota State land, providing additional access to wildlife and ensuring a peaceful, secluded environment. **ATV & Trail Access:** With ample space for ATV vehicles, you can explore your land and the surrounding trails, creating endless opportunities for recreation & family fun. **Natural Beauty:** The property boasts a stunning mix of mature trees and open spaces, offering breathtaking views and a perfect backdrop for your dream cabin, home, or campsite. **Location:** Just a short drive from local amenities, this property provides the perfect balance of seclusion & accessibility, allowing you to enjoy both nature & the conveniences of nearby towns. Your Next Adventure Awaits whether you're looking to build, enjoy weekend getaways, or simply immerse yourself in Minnesota's natural beauty, this property is a rare find. Don't miss out on the chance to own 98 acres of recreational paradise! For more information or to schedule a private showing, contact us today!

Additional Details:

Lot Acres	98
Lot Dimensions	2658x1507xIRR
School District	309
Taxes	(unreported)
Taxes with Assessments	(unreported)
Tax Year	2024

Additional Features:

Driving Directions:

From US Hwy 71, go west on County 46 for 2 miles, turn north onto Brietbach Road & Go approx. one mile. Take right hand fork. Follow arrow signs. Look for neighbor house number of 37105.



Listed By:
Your Home Sold Guaranteed Realty Exclusive

Affinity Real Estate Inc. participates in the Regional Multiple Listing Service of Minnesota, Inc Broker Reciprocity (sm) program, allowing us to display other broker's listings on our website. All properties are subject to prior sale, change or withdrawal.



Call Affinity Real Estate

218-237-3333

info@affinityrealestate.com



Affinity Real Estate - 600 Park Avenue South - Park Rapids MN 56470



website: www.AffinityRealEstate.com | email: info@affinityrealestate.com | office: 218-237-3333 | fax:218-237-3377



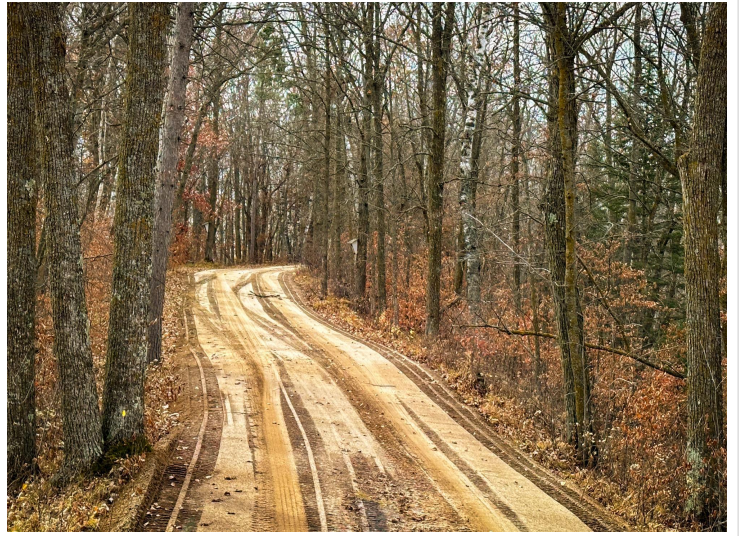
\$249,900
MLS 6606886 Land
Tract 1 Brietbach Road
Park Rapids MN 56470



website: www.AffinityRealEstate.com | email: info@affinityrealestate.com | office: 218-237-3333 | fax:218-237-3377



\$249,900
MLS 6606886 Land
Tract 1 Brietbach Road
Park Rapids MN 56470



website: www.AffinityRealEstate.com | email: info@affinityrealestate.com | office: 218-237-3333 | fax:218-237-3377



\$249,900
MLS 6606886 Land
Tract 1 Brietbach Road
Park Rapids MN 56470



website: www.AffinityRealEstate.com | email: info@affinityrealestate.com | office: 218-237-3333 | fax:218-237-3377



\$249,900
MLS 6606886 Land
Tract 1 Brietbach Road
Park Rapids MN 56470