



MLS 6606990 Lake Land

\$99,900

Description:

Take advantage of this rare opportunity to own 1.67 acres with direct frontage on scenic Middle Leaf Lake near Ottertail. Spanning 404 acres with a maximum depth of 43 feet, Middle Leaf Lake is perfect for boating, fishing, and outdoor enjoyment. Whether you're looking for a peaceful recreational spot or a place to build your lake home, this lot offers endless possibilities. Interested in expanding? The neighboring 2+ acre lot, complete with a charming farmhouse, is also available for \$299,900. Don't miss out on this incredible lakeside opportunity!

Additional Details:

Lot Acres	1.67
Lot Dimensions	100x284
School District	545
Taxes	\$50
Taxes with Assessments	\$50
Tax Year	2024

Additional Features:

Driving Directions:

From Henning, take County Highway 108 north to Leaf River Rd and turn east.



Listed By:
Keller Williams Realty Professionals

Affinity Real Estate Inc. participates in the Regional Multiple Listing Service of Minnesota, Inc Broker Reciprocity (sm) program, allowing us to display other broker's listings on our website. All properties are subject to prior sale, change or withdrawal.



Call Affinity Real Estate

218-237-3333

info@affinityrealestate.com



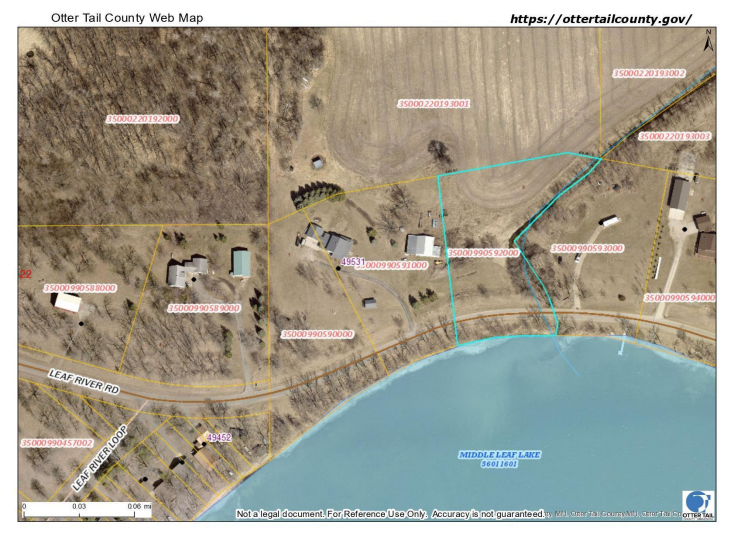
Affinity Real Estate - 600 Park Avenue South - Park Rapids MN 56470



website: www.AffinityRealEstate.com | email: info@affinityrealestate.com | office: 218-237-3333 | fax:218-237-3377



\$99,900
MLS 6606990 Lake Land
495XX Leaf River Rd
Ottertail MN 56571



website: www.AffinityRealEstate.com | email: info@affinityrealestate.com | office: 218-237-3333 | fax:218-237-3377



\$99,900
MLS 6606990 Lake Land
495XX Leaf River Rd
Ottertail MN 56571