



MLS 6607390 Land

\$69,000

8 Acres
Raw Land

XXXX 440th St
Wadena MN 56482

Status: Active

Description:

Excellent building location near Sebeka, Wadena, and Bluffton! 8+/- acres of fully wooded land with plenty of access along 440th St. Only 6.5 miles from Sebeka, and 12 miles from Wadena and Bluffton. Parcel A on the map. Additional acres are available!

Additional Details:

Lot Acres	8
Lot Dimensions	8+/- Acres
School District	820
Taxes	\$88
Taxes with Assessments	\$88
Tax Year	2024

Additional Features:

Driving Directions:

From Sebeka go West on Co Hwy 8/280th st for 4 miles, turn left and head south on Co Hwy 75 for 2 miles, turn right on 440th st and follow to the property on the left side.



Listed By:
Counselor Realty of Detroit Lakes

Affinity Real Estate Inc. participates in the Regional Multiple Listing Service of Minnesota, Inc Broker Reciprocity (sm) program, allowing us to display other broker's listings on our website. All properties are subject to prior sale, change or withdrawal.



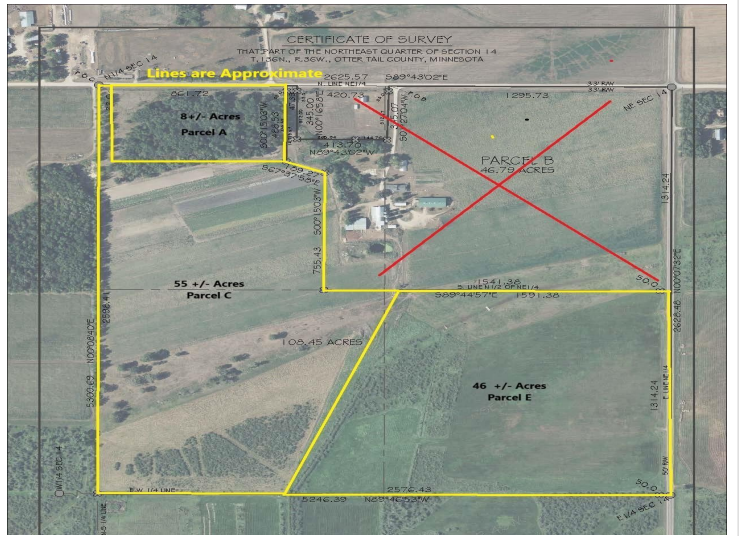
Call Affinity Real Estate

218-237-3333

info@affinityrealestate.com



Affinity Real Estate - 600 Park Avenue South - Park Rapids MN 56470



website: www.AffinityRealEstate.com | email: info@affinityrealestate.com | office: 218-237-3333 | fax: 218-237-3377



\$69,000
 MLS 6607390 Land
 XXXX 440th St
 Wadena MN 56482



website: www.AffinityRealEstate.com | email: info@affinityrealestate.com | office: 218-237-3333 | fax:218-237-3377



\$69,000
MLS 6607390 Land
XXXX 440th St
Wadena MN 56482