



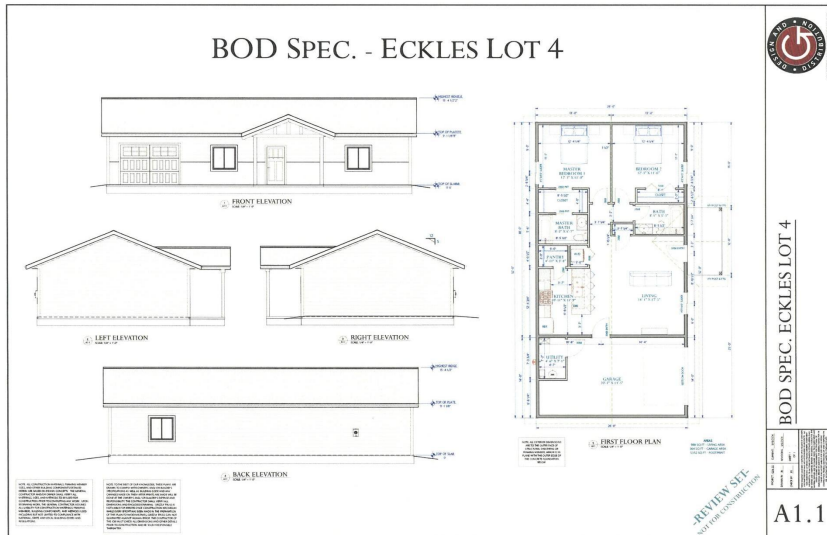
MLS 6607394 Residential

\$244,000

988 sq ft
2 bedrooms
2 baths

6440 Mayflower Road
Bemidji MN 56601

Status: Active



Description:

Welcome to your new home! Nestled amidst the beauty of a 2 acre pine studded lot, this stunning new construction offers the perfect blend of modern elegance and natural serenity. As you enter into this 2 bedroom 2 bath home you're greeted by an inviting open concept living space, illuminated by the soft glow of natural light. The heart of the home is the great room with premium amenities like soft close cabinets, walk-in pantry, solid core doors, LTV flooring. Outside, the front covered porch offers a retreat where you can sip on your morning coffee or bask in the sun. The expansive lot provides ample space for outdoor activities, from gardening to stargazing, offering a peaceful sanctuary to call your own. The exterior also boosts premium features like Marvin windows, and LP Smart Siding. For added storage and convenience, the heated attached garage is perfect for all your toys. Don't miss your chance to make this exquisite modern home yours.

Additional Details:

Year Built	2024
Lot Acres	2.11
Lot Dimensions	275x440x53x69x183x308
Garage Stalls	1
School District	31
Taxes	\$700
Taxes with Assessments	\$700
Tax Year	2023

Additional Features:

Basement: None **Fuel:** Electric, Propane **Garage:** 1 **Heat:** Boiler, Ductless Mini-Split, Hot Water, Radiant Floor **Sewer:** Septic System Compliant - Yes **Water:** Submersible - 4 Inch, Well **Air Conditioning:** Ductless Mini-Split

Driving Directions:

Hwy 2 west from Bemidji, north on Eckles Rd to a left on Mayflower Rd, second lot.



Listed By:
Grimes Realty

Affinity Real Estate Inc. participates in the Regional Multiple Listing Service of Minnesota, Inc Broker Reciprocity (sm) program, allowing us to display other broker's listings on our website. All properties are subject to prior sale, change or withdrawal.



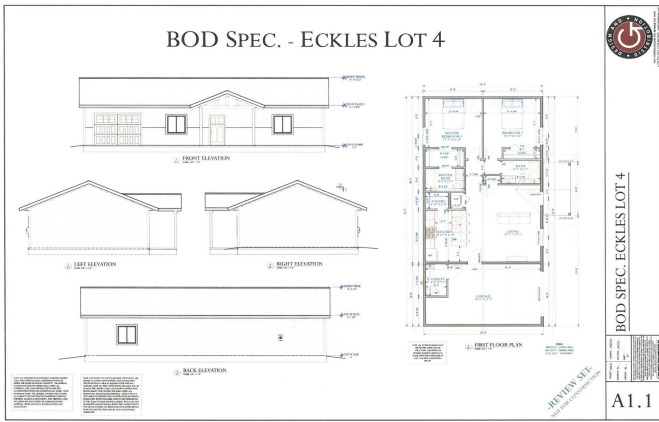
Call Affinity Real Estate

218-237-3333

info@affinityrealestate.com



Affinity Real Estate - 600 Park Avenue South - Park Rapids MN 56470



website: www.AffinityRealEstate.com | email: info@affinityrealestate.com | office: 218-237-3333 | fax:218-237-3377



\$244,000
 MLS 6607394 Residential
 6440 Mayflower Road
 Bemidji MN 56601