



MLS 6607876 Land

\$138,000

45 Acres
Raw Land

TBD 440th Street
Wadena MN 56482

Status: Active

Description:

45+/- acres of mixed land near Sebeka, Wadena, and Bluffton! Farming, pasture, or hunting property. Easy access off hwy 75. The Blue Creek runs through the property. Additional acres are available. This property is parcel E on the map.

Additional Details:

Lot Acres	45
Lot Dimensions	45 +/- Acres
School District	820
Taxes	\$2,646
Taxes with Assessments	\$2,646
Tax Year	2024

Additional Features:

Driving Directions:

From Sebeka go West on Co hwy 8/280th St. for 4 miles, turn left and head South on Co Hwy 75 go approx. 2.25 miles and the property is on the right side.



Listed By:
Counselor Realty of Detroit Lakes

Affinity Real Estate Inc. participates in the Regional Multiple Listing Service of Minnesota, Inc Broker Reciprocity (sm) program, allowing us to display other broker's listings on our website. All properties are subject to prior sale, change or withdrawal.



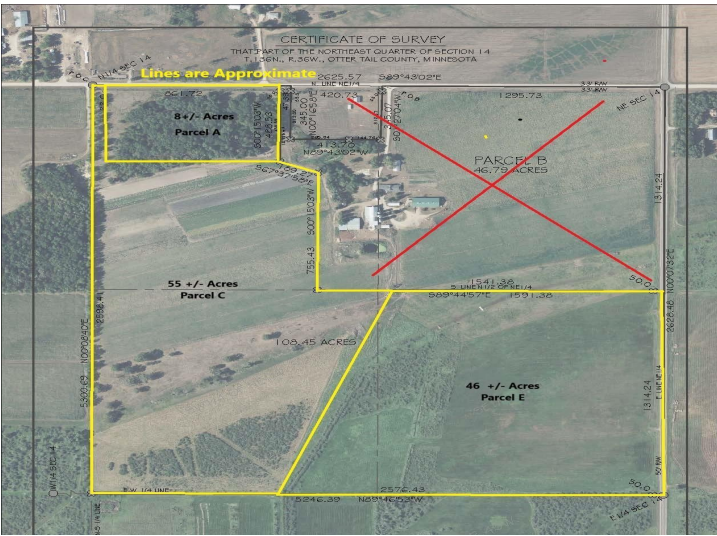
Call Affinity Real Estate

218-237-3333

info@affinityrealestate.com



Affinity Real Estate - 600 Park Avenue South - Park Rapids MN 56470



website: www.AffinityRealEstate.com | email: info@affinityrealestate.com | office: 218-237-3333 | fax: 218-237-3377



\$138,000
 MLS 6607876 Land
 TBD 440th Street
 Wadena MN 56482



website: www.AffinityRealEstate.com | email: info@affinityrealestate.com | office: 218-237-3333 | fax:218-237-3377



\$138,000
MLS 6607876 Land
TBD 440th Street
Wadena MN 56482