



MLS 6608435 Lake Home

\$399,000

1,228 sq ft
2 bedrooms
2 baths

5580 Sibley Lake Road
Pequot Lakes MN 56472

Waterfront: Sibley

Status: Pending

Description:

Sibley Lake cabin on AMAZING LOT with 120 feet of gradual frontage plus BEACH AND DOCK!! Hard sand bottom, beautiful trees, year-round cabin FULLY FURNISHED with LOTS OF BEDS and new Bedding!! SWEET Bunkhouse at the water's edge that is finished on Both Levels! Gorgeous building site or keep the cozy cabin with it's deck overlooking the lake. AWESOME LOCATION!! NEXT DOOR TO REALLY NICE HOMES.

Additional Details:

Year Built	1920
Lot Acres	0.7
Lot Dimensions	120x200x60x230
School District	186
Taxes	\$1,428
Taxes with Assessments	\$1,428
Tax Year	2024

Additional Features:

Basement: Block, Daylight/Lookout Windows, Full **Fuel:** Natural Gas **Heat:** Forced Air **Sewer:** Private Sewer, Tank with Drainage Field
Water: Drilled, Private, Well **Air Conditioning:** Window Unit(s)

Driving Directions:

371 North to County Rd 17, go West one mile to Sibley Lake Rd, go South to Fire# 5580



Listed By:
Keller Williams Classic Realty

Affinity Real Estate Inc. participates in the Regional Multiple Listing Service of Minnesota, Inc Broker Reciprocity (sm) program, allowing us to display other broker's listings on our website. All properties are subject to prior sale, change or withdrawal.



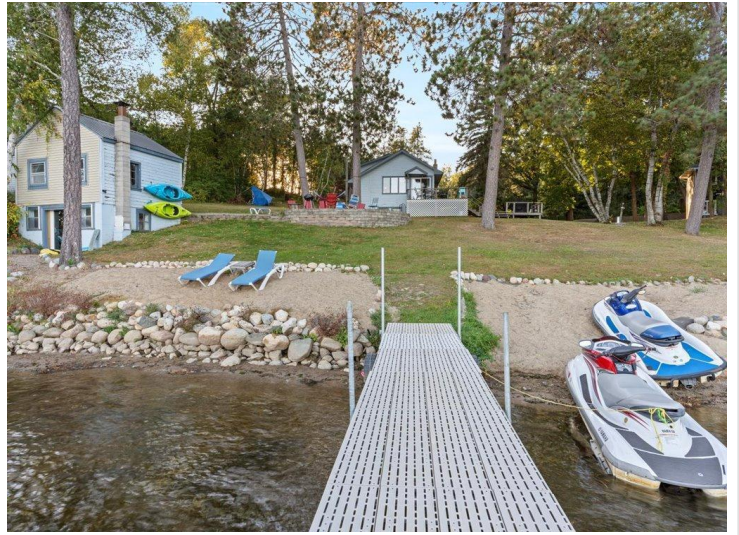
Call Affinity Real Estate

218-237-3333

info@affinityrealestate.com



Affinity Real Estate - 600 Park Avenue South - Park Rapids MN 56470



website: www.AffinityRealEstate.com | email: info@affinityrealestate.com | office: 218-237-3333 | fax:218-237-3377



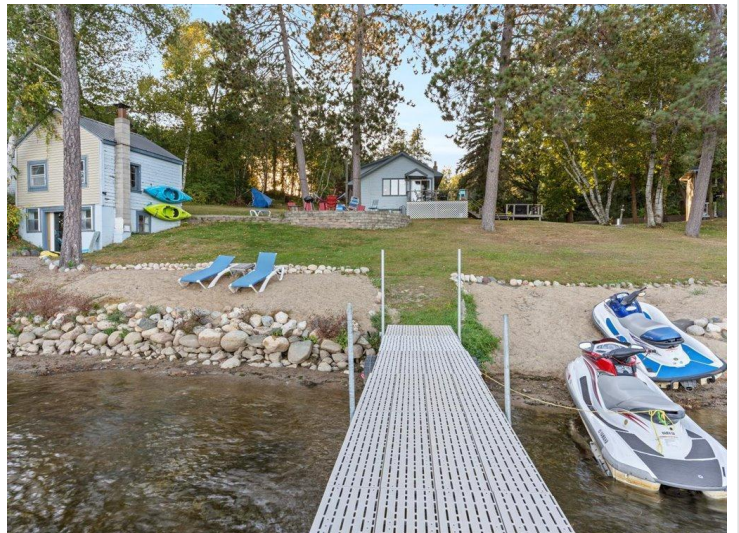
\$399,000
MLS 6608435 Lake Home
5580 Sibley Lake Road
Pequot Lakes MN 56472



website: www.AffinityRealEstate.com | email: info@affinityrealestate.com | office: 218-237-3333 | fax:218-237-3377



\$399,000
MLS 6608435 Lake Home
5580 Sibley Lake Road
Pequot Lakes MN 56472



website: www.AffinityRealEstate.com | email: info@affinityrealestate.com | office: 218-237-3333 | fax:218-237-3377



\$399,000
MLS 6608435 Lake Home
5580 Sibley Lake Road
Pequot Lakes MN 56472



website: www.AffinityRealEstate.com | email: info@affinityrealestate.com | office: 218-237-3333 | fax:218-237-3377



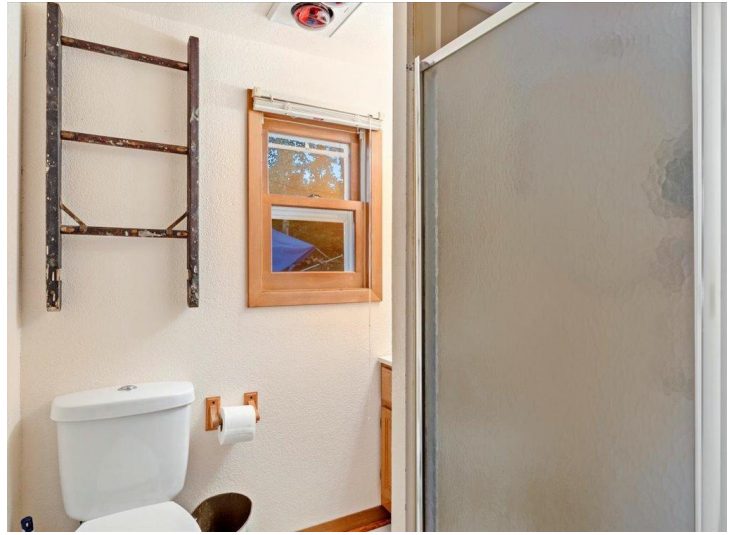
\$399,000
MLS 6608435 Lake Home
5580 Sibley Lake Road
Pequot Lakes MN 56472



website: www.AffinityRealEstate.com | email: info@affinityrealestate.com | office: 218-237-3333 | fax:218-237-3377



\$399,000
MLS 6608435 Lake Home
5580 Sibley Lake Road
Pequot Lakes MN 56472



website: www.AffinityRealEstate.com | email: info@affinityrealestate.com | office: 218-237-3333 | fax:218-237-3377

Affinity
REAL ESTATE INC

\$399,000
MLS 6608435 Lake Home
5580 Sibley Lake Road
Pequot Lakes MN 56472



website: www.AffinityRealEstate.com | email: info@affinityrealestate.com | office: 218-237-3333 | fax:218-237-3377



\$399,000

MLS 6608435 Lake Home
5580 Sibley Lake Road
Pequot Lakes MN 56472