



MLS 6608453 Lake Home

\$932,000

4,013 sq ft
5 bedrooms
4 baths

39498 Dora Lee Lane
Waubun MN 56589

Waterfront: White Earth

Status: Active

Description:

Dora Lee Lane is a spectacular year round home that sits on a 1.6 acre dead end quiet road. Trees surround the entire property. Enter through the charming foyer and enjoy the main living area w vaulted ceilings w a floor to ceiling stone fireplace. Huge windows and doors open to the expansive wrap around maintenance free deck. Enjoy the sweeping lake views and landscaping that take you to a level, grassy yard with 125 front feet of shoreline. There is a great separate metal garage and lakeshore shed for convenience. The home has a heated and attached 2 stall garage, main floor laundry, 3/4 guest bath, great kitchen and dining with lakeside deck access. The main floor primary has an en suite bath w WIC. Upstairs is perfection w 4 bedrooms and a guest bath with a charming loft and lake views. The lower level has a great room w fireplace, a guest bath, a dreamy mechanical room, and a great bonus space w hot tub and indoor sauna. White Earth Lake is one of the clearest lakes in MN with a depth of 120 feet. The lake offers superior fishing, swimming, scuba, private coves, and 2 islands. Boat up and dock at the ever adored Cedar Crest Resort for food, drinks, and games. Fun for all! White Earth Lake is surrounded by golf, miles of snow mobile and hiking paths, Itasca State Park, Tamarac Game Farm and so much more! This home and natural amenities are a dream come true!

Additional Details:

Year Built	1996
Lot Acres	1.69
Lot Dimensions	irregular
Garage Stalls	2
School District	435
Taxes	\$6,284
Taxes with Assessments	\$6,284
Tax Year	2023

Additional Features:

Basement: Concrete **Fuel:** Electric, Propane **Garage:** 2 **Heat:** Dual, Forced Air, Radiant Floor **Sewer:** Mound Septic, Private Sewer
Water: Private **Air Conditioning:** Central Air

Driving Directions:

use ads.



Listed By:
Park Co., REALTORS®

Affinity Real Estate Inc. participates in the Regional Multiple Listing Service of Minnesota, Inc Broker Reciprocity (sm) program, allowing us to display other broker's listings on our website. All properties are subject to prior sale, change or withdrawal.



Call Affinity Real Estate

218-237-3333

info@affinityrealestate.com



Affinity Real Estate - 600 Park Avenue South - Park Rapids MN 56470



website: www.AffinityRealEstate.com | email: info@affinityrealestate.com | office: 218-237-3333 | fax:218-237-3377



\$932,000
MLS 6608453 Lake Home
39498 Dora Lee Lane
Waubun MN 56589



website: www.AffinityRealEstate.com | email: info@affinityrealestate.com | office: 218-237-3333 | fax:218-237-3377

Affinity
REAL ESTATE INC

\$932,000
MLS 6608453 Lake Home
39498 Dora Lee Lane
Waubun MN 56589



website: www.AffinityRealEstate.com | email: info@affinityrealestate.com | office: 218-237-3333 | fax:218-237-3377

Affinity
REAL ESTATE INC

\$932,000
MLS 6608453 Lake Home
39498 Dora Lee Lane
Waubun MN 56589



website: www.AffinityRealEstate.com | email: info@affinityrealestate.com | office: 218-237-3333 | fax: 218-237-3377

Affinity
REAL ESTATE INC

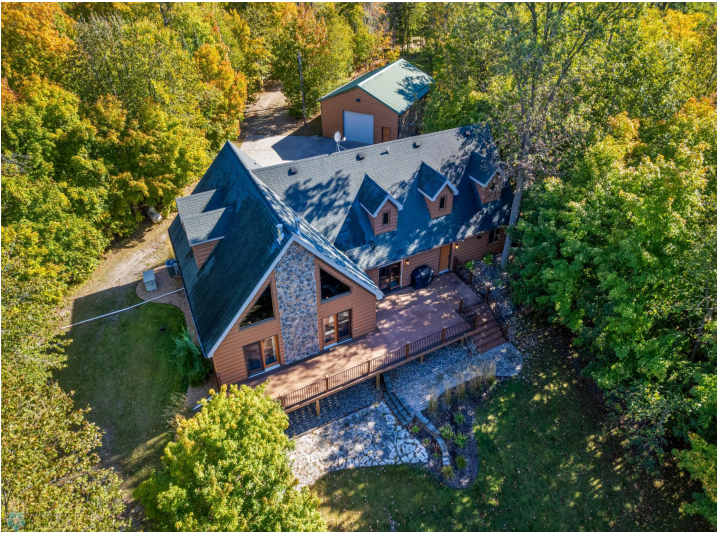
\$932,000
MLS 6608453 Lake Home
39498 Dora Lee Lane
Waubun MN 56589



website: www.AffinityRealEstate.com | email: info@affinityrealestate.com | office: 218-237-3333 | fax:218-237-3377



\$932,000
MLS 6608453 Lake Home
39498 Dora Lee Lane
Waubun MN 56589



website: www.AffinityRealEstate.com | email: info@affinityrealestate.com | office: 218-237-3333 | fax:218-237-3377



\$932,000
MLS 6608453 Lake Home
39498 Dora Lee Lane
Waubun MN 56589



website: www.AffinityRealEstate.com | email: info@affinityrealestate.com | office: 218-237-3333 | fax:218-237-3377



\$932,000
MLS 6608453 Lake Home
39498 Dora Lee Lane
Waubun MN 56589



website: www.AffinityRealEstate.com | email: info@affinityrealestate.com | office: 218-237-3333 | fax:218-237-3377

Affinity
REAL ESTATE INC

\$932,000
MLS 6608453 Lake Home
39498 Dora Lee Lane
Waubun MN 56589