



MLS 6608692 Residential

\$399,990

2,652 sq ft
4 bedrooms
2 baths

847 Rodeo Drive
Bemidji MN 56601

Status: Hold

Description:

Discover the perfect blend of comfort and space in this stunning 3 bedroom home nestled on 3 acres. Designed with an open concept, this home offers seamless living and entertaining spaces all on the main level. The primary bedroom is a true retreat, featuring a walk-in closet, dual sinks, a tiled jet tub, and a walk-in shower. A large laundry room adds to the home's functionality and ease of living. The dining and kitchen area is perfect for entertaining complete with a pantry, island, and beautiful fixtures featuring tons of natural light. Enjoy the outdoors with a large wrap around deck and inviting front porch. The double attached garage provides ample storage and convenience. This space has plenty of room to grow or move up with a vision to complete the unfinished basement! Already equipped with insulation, plenty of natural light, electrical, and plumbing for a wet bar. This exceptional property combines spacious living with plenty of outdoor space, perfect for anyone looking to create their dream!

Additional Details:

Year Built	2013
Lot Acres	3.19
Lot Dimensions	357x558x190x431
Garage Stalls	2
School District	31
Taxes	\$3,814
Taxes with Assessments	\$3,814
Tax Year	2023

Additional Features:

Basement: Egress Window(s), Full, Unfinished **Fuel:** Electric **Garage:** 2 **Heat:** Forced Air **Sewer:** Private Sewer **Water:** Private **Air Conditioning:** Central Air

Driving Directions:

US 71 N. Take left onto Lakewood Dr NW. Turn right onto Fairgrounds Rd NW. Turn left to Rodeo Dr. Destination is on Right



Listed By:
Headwaters Realty Services LLC

Affinity Real Estate Inc. participates in the Regional Multiple Listing Service of Minnesota, Inc Broker Reciprocity (sm) program, allowing us to display other broker's listings on our website. All properties are subject to prior sale, change or withdrawal.



Call Affinity Real Estate

218-237-3333

info@affinityrealestate.com



Affinity Real Estate - 600 Park Avenue South - Park Rapids MN 56470



website: www.AffinityRealEstate.com | email: info@affinityrealestate.com | office: 218-237-3333 | fax:218-237-3377



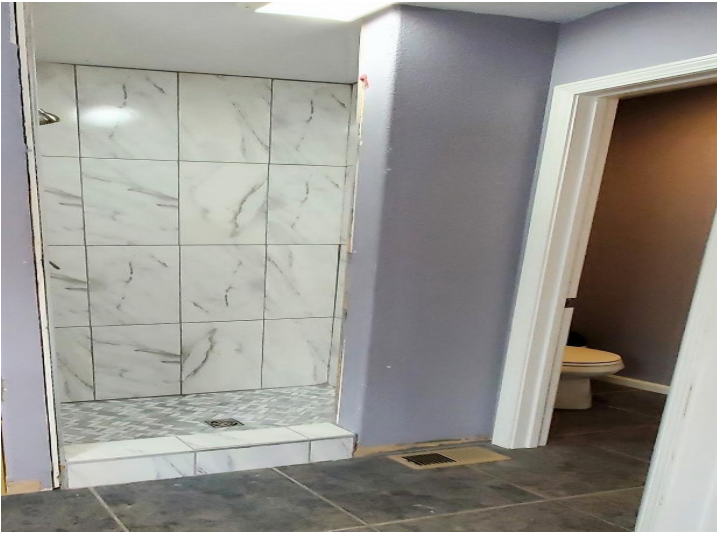
\$399,990
MLS 6608692 Residential
847 Rodeo Drive
Bemidji MN 56601



website: www.AffinityRealEstate.com | email: info@affinityrealestate.com | office: 218-237-3333 | fax:218-237-3377

Affinity
REAL ESTATE INC

\$399,990
MLS 6608692 Residential
847 Rodeo Drive
Bemidji MN 56601



website: www.AffinityRealEstate.com | email: info@affinityrealestate.com | office: 218-237-3333 | fax:218-237-3377



\$399,990
MLS 6608692 Residential
847 Rodeo Drive
Bemidji MN 56601



website: www.AffinityRealEstate.com | email: info@affinityrealestate.com | office: 218-237-3333 | fax:218-237-3377



\$399,990
MLS 6608692 Residential
847 Rodeo Drive
Bemidji MN 56601



website: www.AffinityRealEstate.com | email: info@affinityrealestate.com | office: 218-237-3333 | fax:218-237-3377



\$399,990
MLS 6608692 Residential
847 Rodeo Drive
Bemidji MN 56601



website: www.AffinityRealEstate.com | email: info@affinityrealestate.com | office: 218-237-3333 | fax:218-237-3377



\$399,990
MLS 6608692 Residential
847 Rodeo Drive
Bemidji MN 56601