



MLS 6608863 Residential

**\$500,000**

1,602 sq ft  
4 bedrooms  
2 baths

1610 Redstone Trail  
Pequot Lakes MN 56472

Status: Canceled

**Description:**

Outstanding one level, gorgeous, almost new construction rambler! Stone, floor to ceiling, gas fireplace anchors the spacious, vaulted living room. This light filled home is warm and inviting. Primary bedroom with private ensuite. Center island and informal dining with a walkout to your amazingly landscaped backyard with fire pit, covered porch and 16 x 16 pergola. Peace and quiet awaits. In floor heat is consistent, clean and efficient. Three car, heated, insulated attached garage may not be enough so there is another 12 x 20 detached garage for all the extra toys, boats etc. Nature galore as this home is nestled adjacent to 100's of acres of public land so your private 2.5 acres feels like so much more. Close to Gull Lake, championship golf courses, fine dining and shopping. This location is ideal for anyone who "wants it all"! This sought after neighborhood is one of The Lakes finest developments. Come see for yourself.

**Additional Details:**


Year Built	2020
Lot Acres	2.5
Lot Dimensions	71x293x293x364x306
Garage Stalls	4
School District	186
Taxes	\$2,046
Taxes with Assessments	\$2,046
Tax Year	2024

**Additional Features:**

**Fuel:** Electric, Propane **Heat:** Boiler, Ductless Mini-Split, Radiant Floor

**Driving Directions:**

From Nisswa, North on 371 to a left (West) on County Road 29 to a right (North) on 17th Ave SW (Jacobs Road), to a right (East) on Redstone Trail SW to home on left.



Listed By:  
eXp Realty

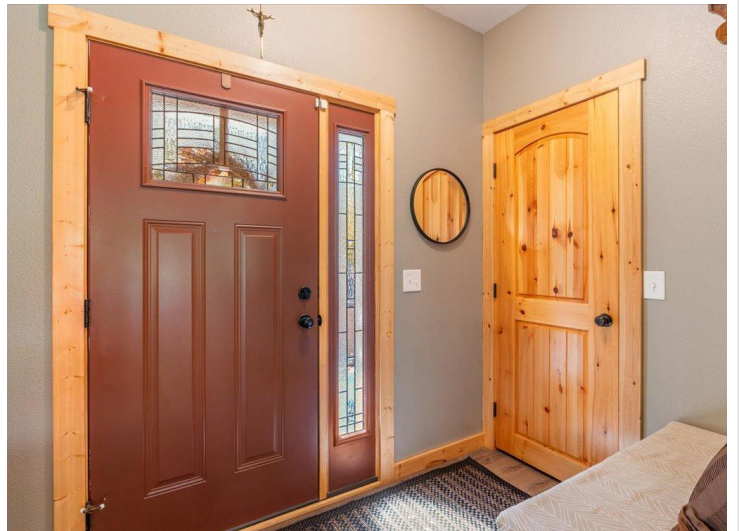
Affinity Real Estate Inc. participates in the Regional Multiple Listing Service of Minnesota, Inc Broker Reciprocity (sm) program, allowing us to display other broker's listings on our website. All properties are subject to prior sale, change or withdrawal.



**Call Affinity Real Estate**  
**218-237-3333**  
**info@affinityrealestate.com**

Affinity Real Estate - 600 Park Avenue South - Park Rapids MN 56470





website: [www.AffinityRealEstate.com](http://www.AffinityRealEstate.com) | email: [info@affinityrealestate.com](mailto:info@affinityrealestate.com) | office: 218-237-3333 | fax:218-237-3377

**Affinity**  
REAL ESTATE INC

**\$500,000**  
MLS 6608863 Residential  
1610 Redstone Trail  
Pequot Lakes MN 56472





website: [www.AffinityRealEstate.com](http://www.AffinityRealEstate.com) | email: [info@affinityrealestate.com](mailto:info@affinityrealestate.com) | office: 218-237-3333 | fax: 218-237-3377

**Affinity**  
REAL ESTATE INC

**\$500,000**  
MLS 6608863 Residential  
1610 Redstone Trail  
Pequot Lakes MN 56472





website: [www.AffinityRealEstate.com](http://www.AffinityRealEstate.com) | email: [info@affinityrealestate.com](mailto:info@affinityrealestate.com) | office: 218-237-3333 | fax:218-237-3377



**\$500,000**  
MLS 6608863 Residential  
1610 Redstone Trail  
Pequot Lakes MN 56472



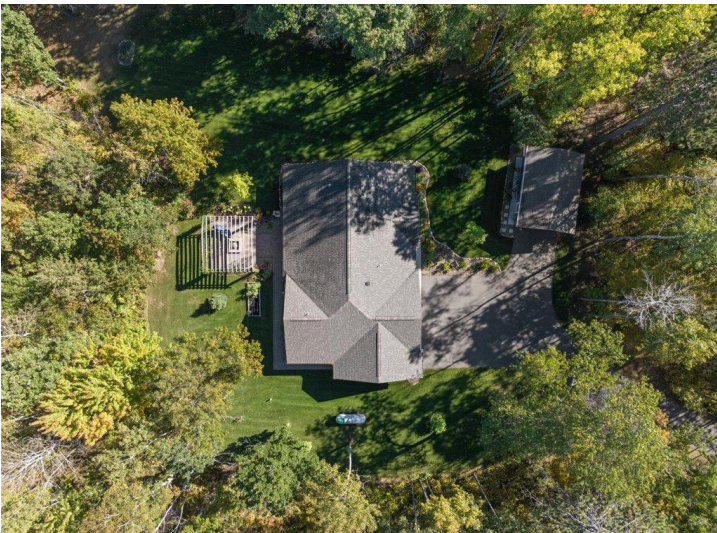
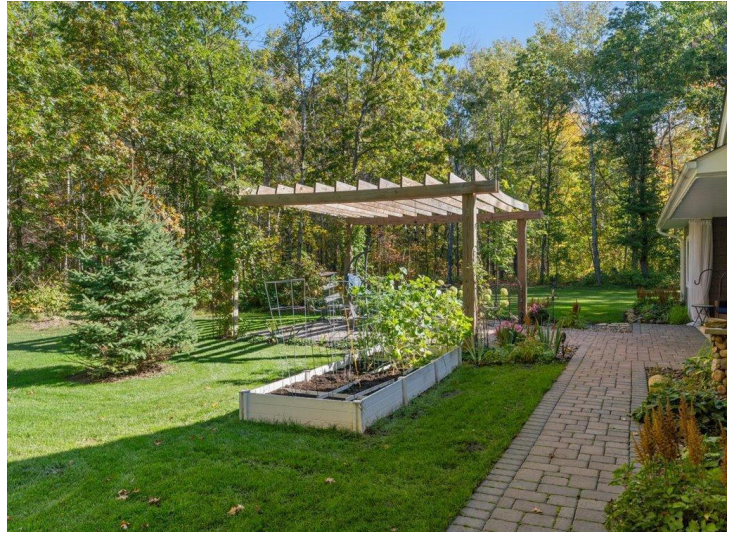


website: [www.AffinityRealEstate.com](http://www.AffinityRealEstate.com) | email: [info@affinityrealestate.com](mailto:info@affinityrealestate.com) | office: 218-237-3333 | fax:218-237-3377

**Affinity**  
REAL ESTATE INC

**\$500,000**  
MLS 6608863 Residential  
1610 Redstone Trail  
Pequot Lakes MN 56472





website: [www.AffinityRealEstate.com](http://www.AffinityRealEstate.com) | email: [info@affinityrealestate.com](mailto:info@affinityrealestate.com) | office: 218-237-3333 | fax:218-237-3377

**Affinity**  
REAL ESTATE INC

**\$500,000**  
MLS 6608863 Residential  
1610 Redstone Trail  
Pequot Lakes MN 56472





website: [www.AffinityRealEstate.com](http://www.AffinityRealEstate.com) | email: [info@affinityrealestate.com](mailto:info@affinityrealestate.com) | office: 218-237-3333 | fax: 218-237-3377



**\$500,000**  
MLS 6608863 Residential  
1610 Redstone Trail  
Pequot Lakes MN 56472





website: [www.AffinityRealEstate.com](http://www.AffinityRealEstate.com) | email: [info@affinityrealestate.com](mailto:info@affinityrealestate.com) | office: 218-237-3333 | fax:218-237-3377



**\$500,000**  
MLS 6608863 Residential  
1610 Redstone Trail  
Pequot Lakes MN 56472





website: [www.AffinityRealEstate.com](http://www.AffinityRealEstate.com) | email: [info@affinityrealestate.com](mailto:info@affinityrealestate.com) | office: 218-237-3333 | fax:218-237-3377



**\$500,000**  
MLS 6608863 Residential  
1610 Redstone Trail  
Pequot Lakes MN 56472