



MLS 6609233 Land

\$80,000

13 Acres
Raw Land

TBD Roosevelt Road
Bemidji MN 56601

Status: Pending

Description:

A rare opportunity to purchase a very nice parcel just east of the city limits in Bemidji township. Mostly open but does have some nice pine. This would make an excellent location to build a home or explore other options. The adjacent home and 13 acres are also for sale.

Additional Details:

Lot Acres	13
Lot Dimensions	500x1000
School District	31
Taxes	\$330
Taxes with Assessments	\$330
Tax Year	2024

Additional Features:

Driving Directions:

South on Paul Bunyan Dr, left on Roosevelt Rd. Access is between #2530 & #2702.



Listed By:
Century 21 Dickinson

Affinity Real Estate Inc. participates in the Regional Multiple Listing Service of Minnesota, Inc Broker Reciprocity (sm) program, allowing us to display other broker's listings on our website. All properties are subject to prior sale, change or withdrawal.



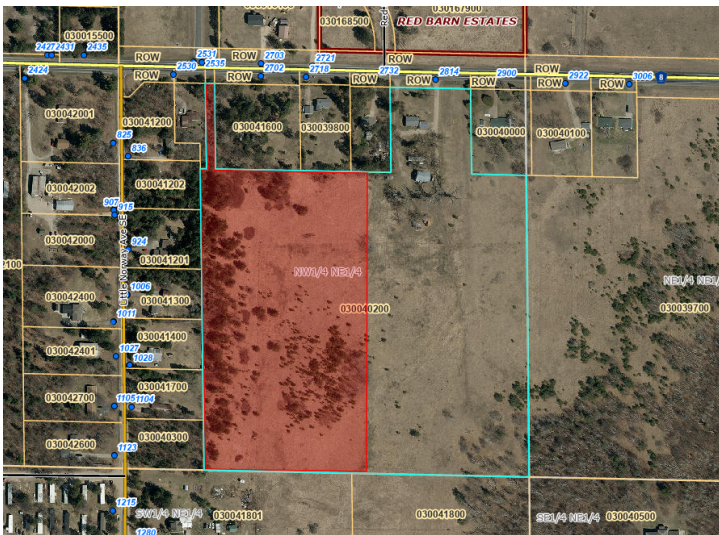
Call Affinity Real Estate

218-237-3333

info@affinityrealestate.com



Affinity Real Estate - 600 Park Avenue South - Park Rapids MN 56470



website: www.AffinityRealEstate.com | email: info@affinityrealestate.com | office: 218-237-3333 | fax:218-237-3377



\$80,000
MLS 6609233 Land
TBD Roosevelt Road
Bemidji MN 56601