



MLS 6609827 Lake Land

\$264,900

Description:

Imagine building your dream home, or getaway cabin in this serene setting on Kabekona Lake. Enjoy picturesque sunrises and sunsets from your 1.6 acre beautiful "future lakeside retreat"! Don't miss your chance to own a piece of paradise just 20 minutes from Walker or Bemidji!

Additional Details:

Lot Acres	1.6
Lot Dimensions	118x637.8x108x650
School District	306
Taxes	\$760
Taxes with Assessments	\$760
Tax Year	2024

Additional Features:

Driving Directions:

In Park Rapids, from HWY-71/34, East on 34 for approximately 17 miles to MN-64 for 13 miles to County Rd 39. Turn right on County Rd 39 for approximately 2.6 miles to #35777. Right to our arrow signs. Access to lot for sale is through seller's property. Call agent for details.



Listed By:
Coldwell Banker Crown Realtors

Affinity Real Estate Inc. participates in the Regional Multiple Listing Service of Minnesota, Inc Broker Reciprocity (sm) program, allowing us to display other broker's listings on our website. All properties are subject to prior sale, change or withdrawal.



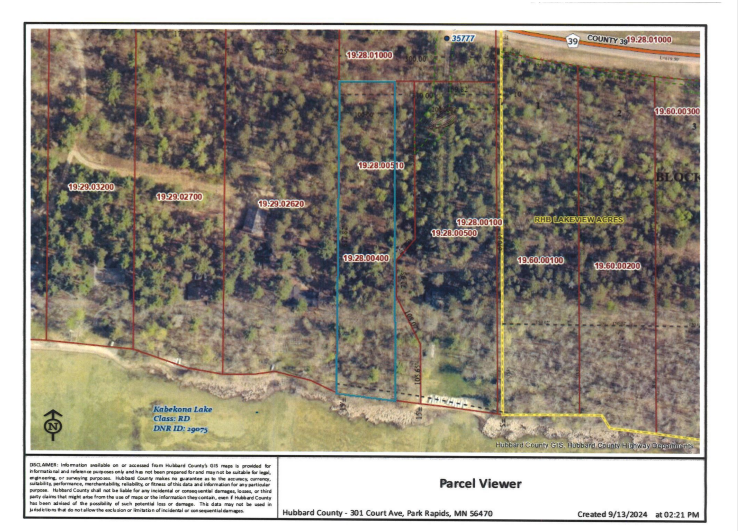
Call Affinity Real Estate

218-237-3333

info@affinityrealestate.com



Affinity Real Estate - 600 Park Avenue South - Park Rapids MN 56470



website: www.AffinityRealEstate.com | email: info@affinityrealestate.com | office: 218-237-3333 | fax: 218-237-3377



\$264,900
 MLS 6609827 Lake Land
 TBD County 39
 Laporte MN 56461