



MLS 6610667 Residential

\$289,900

2,332 sq ft
4 bedrooms
2 baths

3729 Prairie Street
Bemidji MN 56601

Status: Active

Description:

Welcome to your dream home! This beautifully maintained 4-bedroom, 2-bathroom property boasts a brand new roof and newly constructed decks, perfect for outdoor entertaining. Key Features:
Spacious Living Areas: Enjoy multiple living spaces that offer flexibility for relaxation and gatherings. Fenced-In Yard: perfect for dogs. New finishes throughout, ensuring a move-in ready experience. Conveniently located near schools, parks, and shopping, this home combines comfort with practicality. Don't miss your chance to make it yours!

Additional Details:

Year Built	2003
Lot Acres	0.95
Lot Dimensions	155 x 265
Garage Stalls	2
School District	31
Taxes	\$2,786
Taxes with Assessments	\$2,968
Tax Year	2024

Additional Features:

Fuel: Natural Gas **Heat:** Forced Air

Driving Directions:

Take First St E out of downtown. Left onto Lake Ave NE. Right onto Power Dam Rd NE. Right onto Valley View Dr NE, left onto Prairie St NE. House on left. Sign in yard



Listed By:
Think Minnesota Realty LLC

Affinity Real Estate Inc. participates in the Regional Multiple Listing Service of Minnesota, Inc Broker Reciprocity (sm) program, allowing us to display other broker's listings on our website. All properties are subject to prior sale, change or withdrawal.



Call Affinity Real Estate

218-237-3333

info@affinityrealestate.com



Affinity Real Estate - 600 Park Avenue South - Park Rapids MN 56470



website: www.AffinityRealEstate.com | email: info@affinityrealestate.com | office: 218-237-3333 | fax: 218-237-3377

Affinity
REAL ESTATE INC

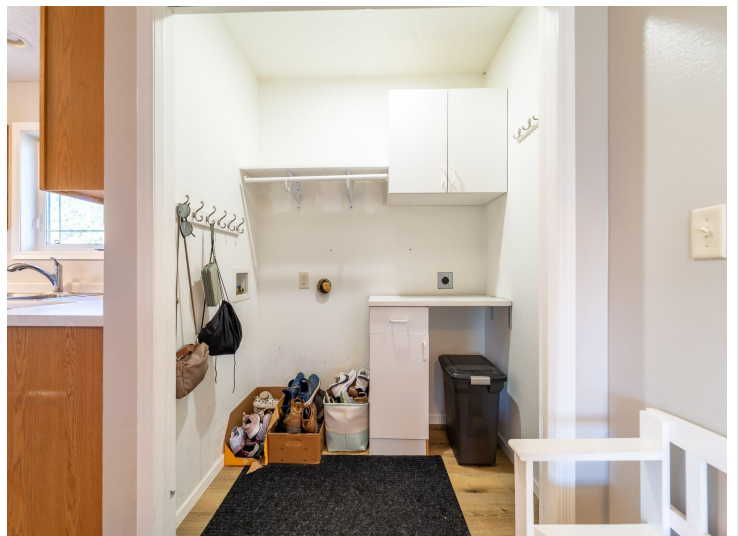
\$289,900
MLS 6610667 Residential
3729 Prairie Street
Bemidji MN 56601



website: www.AffinityRealEstate.com | email: info@affinityrealestate.com | office: 218-237-3333 | fax:218-237-3377

Affinity
REAL ESTATE INC

\$289,900
MLS 6610667 Residential
3729 Prairie Street
Bemidji MN 56601



website: www.AffinityRealEstate.com | email: info@affinityrealestate.com | office: 218-237-3333 | fax:218-237-3377

Affinity
REAL ESTATE INC

\$289,900
MLS 6610667 Residential
3729 Prairie Street
Bemidji MN 56601



website: www.AffinityRealEstate.com | email: info@affinityrealestate.com | office: 218-237-3333 | fax:218-237-3377

Affinity
REAL ESTATE INC

\$289,900
MLS 6610667 Residential
3729 Prairie Street
Bemidji MN 56601



website: www.AffinityRealEstate.com | email: info@affinityrealestate.com | office: 218-237-3333 | fax:218-237-3377



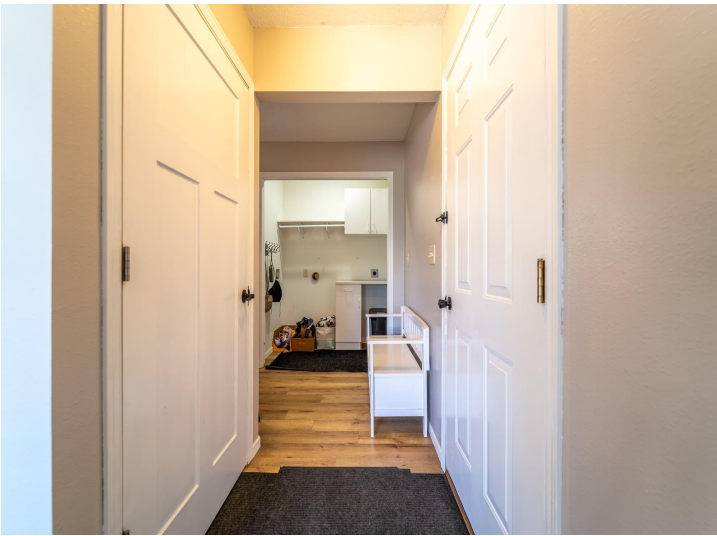
\$289,900
MLS 6610667 Residential
3729 Prairie Street
Bemidji MN 56601



website: www.AffinityRealEstate.com | email: info@affinityrealestate.com | office: 218-237-3333 | fax:218-237-3377

Affinity
REAL ESTATE INC

\$289,900
MLS 6610667 Residential
3729 Prairie Street
Bemidji MN 56601



website: www.AffinityRealEstate.com | email: info@affinityrealestate.com | office: 218-237-3333 | fax:218-237-3377



\$289,900
MLS 6610667 Residential
3729 Prairie Street
Bemidji MN 56601