



MLS 6610904 Lake Home

\$2,800,000

5,342 sq ft
6 bedrooms
6 baths

1242 Maple Leaf Trail
Walker MN 56484

Waterfront: Leech

Status: Active

Description:

Welcome to your dream beach home on the prestigious south side of Leech Lake! With 5342 square feet of luxury living, this impressive home is all about the beach experience. From stunning “big water” views to a 23’ cathedral ceiling in the main living area, you will be surrounded by top-of-the-line materials and craftsmanship. Cozy up by the floor-to-ceiling REAL stone wood burning fireplace or enjoy the panoramic view. Fir wood flooring. The lakeside wall of windows offers breathtaking views and natural light.

The open concept kitchen is every chef’s dream with high-end appliances and plenty of counter space for cooking and entertaining. The exceptional lakeside master suite boasts a gas fireplace for cozy nights and a private oasis from the rest of the home. A second bedroom suite on the main level offers convenience and privacy for guests.

But let’s talk about that beach – arguably one of the best on Leech Lake! At 200’ wide by 43’ deep, it’s perfect for swimming, sunbathing, or enjoying water sports. And when you’re ready to come back inside, there’s even a REAL stone shower/changing room conveniently located just steps away from sandy toes.


This private oasis sits on a double lot with plenty of outdoor space to enjoy including an amazing lakeside screen porch perfect for watching sunsets over the lake. Plus, there’s even a shuffleboard court for some friendly competition!

For added convenience, this home features an attached heated and insulated 3 stall garage – perfect for storing all your lake toys year-round. And if you have a boat, don’t worry - there’s also a covered harbor slip in a nearby association managed harbor.

Don’t miss out on this once-in-a-lifetime opportunity to own your own piece of paradise with an incredible beachfront property on Leech Lake! Schedule your showing today before it’s gone!

Additional Details:

Year Built 2002
Lot Acres 1.29
Lot Dimensions 200x251x200x244

Garage Stalls	3
 Listed By: 113 EXIT MN Lakes Realty Bemidji	
Taxes	\$10,568
Taxes with Assessments	\$10,634
Affinity Real Estate Inc. participates in the Regional Multiple Listing Service of Minnesota, Inc Broker Reciprocity (sm) program, allowing us to display other broker's listings on our website. All properties are subject to prior sale, change or withdrawal.	
Tax Year	2024



Call Affinity Real Estate
218-237-3333
info@affinityrealestate.com



Affinity Real Estate - 600 Park Avenue South - Park Rapids MN 56470

Additional Features:

Fuel: Electric, Propane, Wood **Heat:** Dual, Forced Air, Fireplace(s), Radiant Floor

Driving Directions:



website: www.AffinityRealEstate.com | email: info@affinityrealestate.com | office: 218-237-3333 | fax: 218-237-3377

Affinity
REAL ESTATE INC

\$2,800,000
MLS 6610904 Lake Home
1242 Maple Leaf Trail
Walker MN 56484



website: www.AffinityRealEstate.com | email: info@affinityrealestate.com | office: 218-237-3333 | fax: 218-237-3377

Affinity
REAL ESTATE INC

\$2,800,000
MLS 6610904 Lake Home
1242 Maple Leaf Trail
Walker MN 56484



website: www.AffinityRealEstate.com | email: info@affinityrealestate.com | office: 218-237-3333 | fax: 218-237-3377

Affinity
REAL ESTATE INC

\$2,800,000
MLS 6610904 Lake Home
1242 Maple Leaf Trail
Walker MN 56484



website: www.AffinityRealEstate.com | email: info@affinityrealestate.com | office: 218-237-3333 | fax:218-237-3377

Affinity
REAL ESTATE INC

\$2,800,000
MLS 6610904 Lake Home
1242 Maple Leaf Trail
Walker MN 56484



website: www.AffinityRealEstate.com | email: info@affinityrealestate.com | office: 218-237-3333 | fax:218-237-3377

Affinity
REAL ESTATE INC

\$2,800,000
MLS 6610904 Lake Home
1242 Maple Leaf Trail
Walker MN 56484



website: www.AffinityRealEstate.com | email: info@affinityrealestate.com | office: 218-237-3333 | fax:218-237-3377



\$2,800,000
MLS 6610904 Lake Home
1242 Maple Leaf Trail
Walker MN 56484



website: www.AffinityRealEstate.com | email: info@affinityrealestate.com | office: 218-237-3333 | fax:218-237-3377

Affinity
REAL ESTATE INC

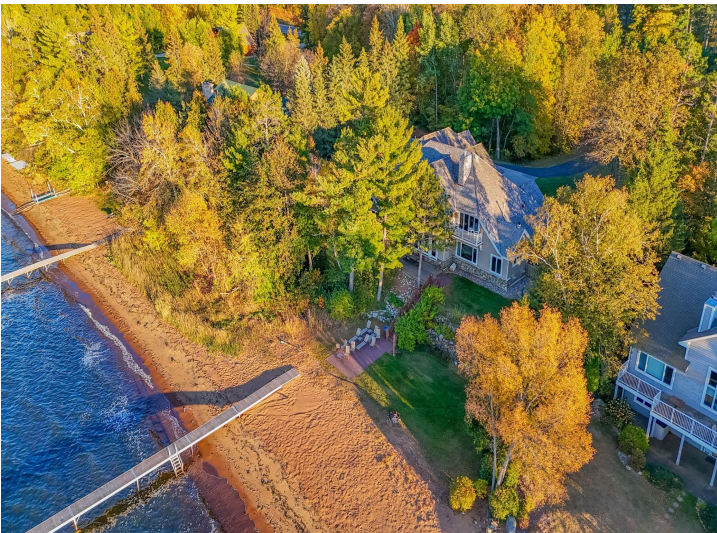
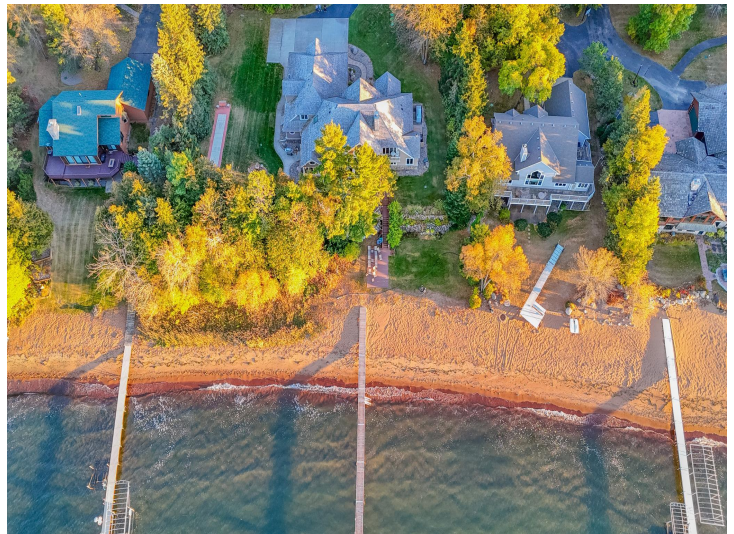
\$2,800,000
MLS 6610904 Lake Home
1242 Maple Leaf Trail
Walker MN 56484



website: www.AffinityRealEstate.com | email: info@affinityrealestate.com | office: 218-237-3333 | fax:218-237-3377



\$2,800,000
MLS 6610904 Lake Home
1242 Maple Leaf Trail
Walker MN 56484



website: www.AffinityRealEstate.com | email: info@affinityrealestate.com | office: 218-237-3333 | fax: 218-237-3377

Affinity
REAL ESTATE INC

\$2,800,000
MLS 6610904 Lake Home
1242 Maple Leaf Trail
Walker MN 56484



website: www.AffinityRealEstate.com | email: info@affinityrealestate.com | office: 218-237-3333 | fax:218-237-3377



\$2,800,000
MLS 6610904 Lake Home
1242 Maple Leaf Trail
Walker MN 56484