



MLS 6611239 Lake Home

\$1,600,000

6,013 sq ft
4 bedrooms
6 baths

1116 Sand Lake Drive
Backus MN 56435

Waterfront: Sand Lake (Woodrow
Twp.) (11027900)

Status: Active

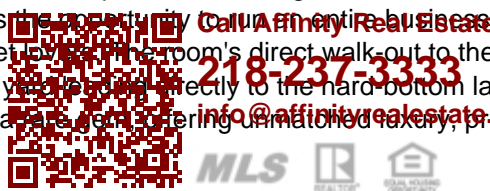
Description:

Prepare to be amazed by this stunning estate nestled on 15.64 acres of pristine land with an incredible 816' of shoreline on peaceful Sand Lake. The home's stone steps lead to a spacious covered porch with a wood ceiling, stone pillars, and lush flowers inviting you inside, where every detail is crafted for luxury, comfort, and endless possibilities. Double glass doors with working colonial shutters open to a spacious foyer that flows into a cozy sitting area featuring a built-in, illuminated bookcase and a TV area perfect for quiet reading or entertainment. At the heart of the home is the great room, with a floor-to-ceiling stone, wood-burning fireplace, complete with a heat-blower. Expansive windows showcase panoramic views of the lake, bringing the beauty of nature indoors. The main level features a guest bedroom with an ensuite that doubles as a powder room, while the owner's suite is a sanctuary of its own. It has large artistic windows that mirror the great room's design, offering golden pools of light. This suite includes his and her bathrooms, one featuring a cleansing bidet. For the culinary enthusiast, the kitchen is a dream come true. It has a massive Australian granite center prep island with a sink and two smaller dishwashers for lighter loads. The beautiful wood cupboards with their glass inserts provide more than enough storage while also showcasing your finer wares. The double oven with an additional bread-warming drawer, massive side-by-side refrigerator/freezer, and wine fridge are perfect for hosting large get-togethers. With the additional sizable granite peninsula; this space is designed for functionality and beauty. The adjacent butler's pantry includes a large dishwasher and a no-touch sink, as well as even more shelving and cupboards for storage. Conveniently, this pantry leads to the garage, which has a heated floor and a no-step wheelchair-accessible entry. Large windows and a door from the kitchen lead to a sprawling lakeside deck, where you can relax to the sounds of nature and a waterfall fed by the lake. This deck is perfect for tranquil outdoor dining. The circular dining room offers panoramic views of the meticulously landscaped yard, lake, and waterfall, making every meal a special occasion. Upstairs, the loft presents two sleeping areas, a walk-through closet, and a bathroom with a shower. Skylights and windows brighten this area, and its open design overlooks the great room, providing stunning views of both the interior and the lake beyond. The lower level of this home includes two additional bedrooms with their own full bathroom and walk-in closets. The large family room also has views of the lake. There's also a great space dedicated to a home office. The home is designed with zoned heating and cooling, a storm cellar with steel walls built into the rock, and a utility room with ample storage and a freezer. There's even space to create your wine cellar. The current owner used a temperature—and humidity-controlled room to craft violins, which could easily be repurposed to preserve precious items such as photos or cigars. The lower level also features a large workshop with professional-grade woodworking equipment and ventilation, complete with a garage door for easy access to your materials. This space has running water, a sink, and in-floor heating, perfect for hobbysts. Another office with a bathroom provides the opportunity to work from home. A dog

call or visit our website for more information. This home is perfect for pet lovers. The room's direct walk-out to the lake also makes it perfect for cleaning fish. Outside, you'll find a flat yard with a direct path to the hard-bottom lakeshore, perfect for swimming and enjoying the water. This lakeside estate is a rare gem offering unmatched luxury, privacy, and an immersive connection to the natural beauty that surrounds it. Call Affinity Real Estate at 218-237-3333 or visit us at www.affinityrealestate.com for more information. We are proud to be a member of the Minnesota Real Estate Reciprocity Program, which allows us to display other broker's listings on our website. All properties are subject to prior sale, change or withdrawal.

Additional Details:

Year Built	1991
Lot Acres	15.64
Lot Dimensions	816x224x773x358x115x111x134x254x89



Affinity Real Estate - 600 Park Avenue South - Park Rapids MN 56470



website: www.AffinityRealEstate.com | email: info@affinityrealestate.com | office: 218-237-3333 | fax:218-237-3377



\$1,600,000
MLS 6611239 Lake Home
1116 Sand Lake Drive
Backus MN 56435



website: www.AffinityRealEstate.com | email: info@affinityrealestate.com | office: 218-237-3333 | fax:218-237-3377



\$1,600,000
MLS 6611239 Lake Home
1116 Sand Lake Drive
Backus MN 56435



website: www.AffinityRealEstate.com | email: info@affinityrealestate.com | office: 218-237-3333 | fax:218-237-3377



\$1,600,000
MLS 6611239 Lake Home
1116 Sand Lake Drive
Backus MN 56435



website: www.AffinityRealEstate.com | email: info@affinityrealestate.com | office: 218-237-3333 | fax:218-237-3377



\$1,600,000
MLS 6611239 Lake Home
1116 Sand Lake Drive
Backus MN 56435



website: www.AffinityRealEstate.com | email: info@affinityrealestate.com | office: 218-237-3333 | fax:218-237-3377



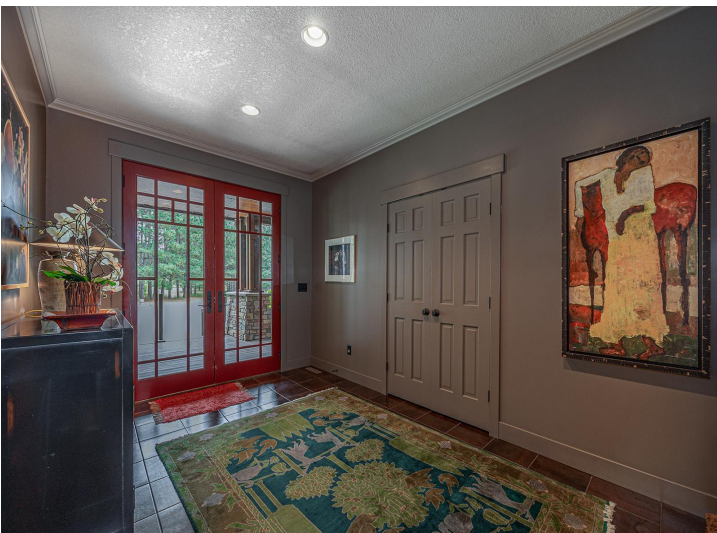
\$1,600,000
MLS 6611239 Lake Home
1116 Sand Lake Drive
Backus MN 56435



website: www.AffinityRealEstate.com | email: info@affinityrealestate.com | office: 218-237-3333 | fax: 218-237-3377

Affinity
REAL ESTATE INC

\$1,600,000
MLS 6611239 Lake Home
1116 Sand Lake Drive
Backus MN 56435



website: www.AffinityRealEstate.com | email: info@affinityrealestate.com | office: 218-237-3333 | fax: 218-237-3377

Affinity
REAL ESTATE INC

\$1,600,000
MLS 6611239 Lake Home
1116 Sand Lake Drive
Backus MN 56435



website: www.AffinityRealEstate.com | email: info@affinityrealestate.com | office: 218-237-3333 | fax: 218-237-3377

Affinity
REAL ESTATE INC

\$1,600,000
MLS 6611239 Lake Home
1116 Sand Lake Drive
Backus MN 56435



website: www.AffinityRealEstate.com | email: info@affinityrealestate.com | office: 218-237-3333 | fax: 218-237-3377

Affinity
REAL ESTATE INC

\$1,600,000
MLS 6611239 Lake Home
1116 Sand Lake Drive
Backus MN 56435



website: www.AffinityRealEstate.com | email: info@affinityrealestate.com | office: 218-237-3333 | fax:218-237-3377

Affinity
REAL ESTATE INC

\$1,600,000
MLS 6611239 Lake Home
1116 Sand Lake Drive
Backus MN 56435



website: www.AffinityRealEstate.com | email: info@affinityrealestate.com | office: 218-237-3333 | fax:218-237-3377



\$1,600,000
MLS 6611239 Lake Home
1116 Sand Lake Drive
Backus MN 56435



website: www.AffinityRealEstate.com | email: info@affinityrealestate.com | office: 218-237-3333 | fax: 218-237-3377

Affinity
REAL ESTATE INC

\$1,600,000
MLS 6611239 Lake Home
1116 Sand Lake Drive
Backus MN 56435



website: www.AffinityRealEstate.com | email: info@affinityrealestate.com | office: 218-237-3333 | fax:218-237-3377

Affinity
REAL ESTATE INC

\$1,600,000
MLS 6611239 Lake Home
1116 Sand Lake Drive
Backus MN 56435



website: www.AffinityRealEstate.com | email: info@affinityrealestate.com | office: 218-237-3333 | fax:218-237-3377



\$1,600,000
MLS 6611239 Lake Home
1116 Sand Lake Drive
Backus MN 56435



website: www.AffinityRealEstate.com | email: info@affinityrealestate.com | office: 218-237-3333 | fax:218-237-3377



\$1,600,000
MLS 6611239 Lake Home
1116 Sand Lake Drive
Backus MN 56435



website: www.AffinityRealEstate.com | email: info@affinityrealestate.com | office: 218-237-3333 | fax:218-237-3377



\$1,600,000

MLS 6611239 Lake Home
1116 Sand Lake Drive
Backus MN 56435