



MLS 6611365 Lake Land

**\$239,000**

**Description:**

26 +/- acres of land with 2200 ft of frontage on the Northwest side of Height of Land Lake. This property has plenty of options with buildable land, camping, deer and waterfowl hunting, fishing, and investment opportunity. Wetland delineation has been completed to verify the high land areas. This is a mostly wooded property with high and low land. You need to cross low land in order to get to the lakeshore. An additional 17 acres bordering the north side is available on another listing. This is #2 on the aerial photo.

**Additional Details:**

Lot Acres	26
Lot Dimensions	26 acres
School District	23
Taxes	\$238
Taxes with Assessments	\$238
Tax Year	2024

**Additional Features:**

**Driving Directions:**

From Detroit Lakes go east on State hwy 34 for 12.9 miles, turn left and head north on SW Height of Land Dr. go 2.4 miles turn right on Hubble Pond Rd, continue on W Height of Land Dr. then onto Co Rd 126 to the property on the right side. Located at the intersection of Co Rd 126 and W HOL Dr.



Listed By:  
Counselor Realty Detroit Lakes

Affinity Real Estate Inc. participates in the Regional Multiple Listing Service of Minnesota, Inc Broker Reciprocity (sm) program, allowing us to display other broker's listings on our website. All properties are subject to prior sale, change or withdrawal.



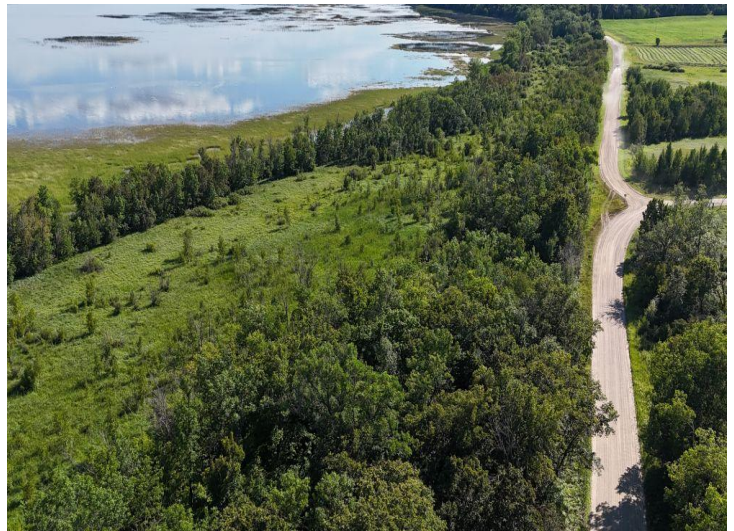
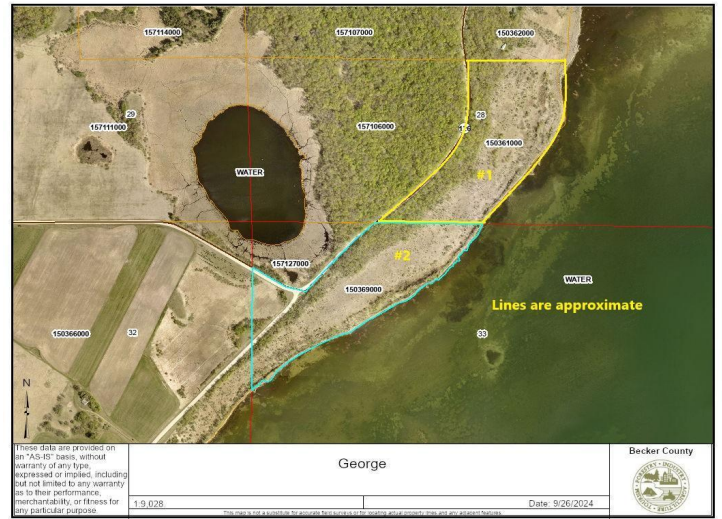
**Call Affinity Real Estate**

**218-237-3333**

**info@affinityrealestate.com**



**Affinity Real Estate - 600 Park Avenue South - Park Rapids MN 56470**



website: [www.AffinityRealEstate.com](http://www.AffinityRealEstate.com) | email: [info@affinityrealestate.com](mailto:info@affinityrealestate.com) | office: 218-237-3333 | fax:218-237-3377



**\$239,000**  
 MLS 6611365 Lake Land  
 XXXX Co Rd 126  
 Rochert MN 56578



website: [www.AffinityRealEstate.com](http://www.AffinityRealEstate.com) | email: [info@affinityrealestate.com](mailto:info@affinityrealestate.com) | office: 218-237-3333 | fax:218-237-3377



**\$239,000**  
MLS 6611365 Lake Land  
XXXX Co Rd 126  
Rochert MN 56578