



MLS 6611617 Residential

\$60,000

924 sq ft
3 bedrooms
2 baths

54540 Main Street
Osage MN 56570

Status: Active

Description:

Being sold as-is. 3 bedroom, 2 bath mobile home set on 0.35 acres in the city of Osage. That has a 8' x 24' deck and a 26' x 28' detached double garage. Within walking distance to the grocery store, Osage Bait & Tackle, Byer's Liquor Store, public swimming beach and the public access to Straight Lake AND a short drive to the Smoky Hills State Forest.

Additional Details:

Year Built	1978
Lot Acres	0.35
Lot Dimensions	115x130
Garage Stalls	2
School District	309
Taxes	\$226
Taxes with Assessments	\$286
Tax Year	2024

Additional Features:

Basement: None **Fuel:** Propane **Garage:** 2 **Heat:** Forced Air **Sewer:** Private Sewer, Tank with Drainage Field **Water:** Sand Point **Air Conditioning:** None

Driving Directions:

From Hwy 71/34 in Park Rapids. West on Hwy 34 to Osage. Right on Pine Ave to property on the left.



Listed By:
Coldwell Banker Crown Realtors

Affinity Real Estate Inc. participates in the Regional Multiple Listing Service of Minnesota, Inc Broker Reciprocity (sm) program, allowing us to display other broker's listings on our website. All properties are subject to prior sale, change or withdrawal.



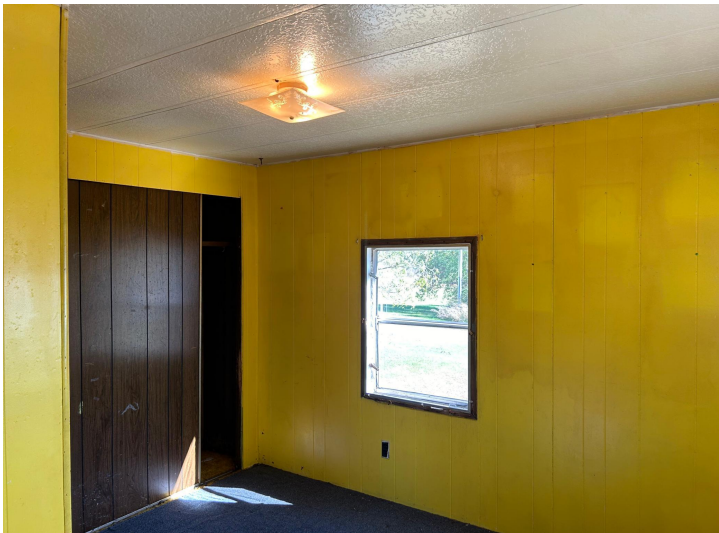
Call Affinity Real Estate

218-237-3333

info@affinityrealestate.com



Affinity Real Estate - 600 Park Avenue South - Park Rapids MN 56470



website: www.AffinityRealEstate.com | email: info@affinityrealestate.com | office: 218-237-3333 | fax:218-237-3377

Affinity
REAL ESTATE INC

\$60,000
MLS 6611617 Residential
54540 Main Street
Osage MN 56570



website: www.AffinityRealEstate.com | email: info@affinityrealestate.com | office: 218-237-3333 | fax: 218-237-3377

Affinity
REAL ESTATE INC

\$60,000
MLS 6611617 Residential
54540 Main Street
Osage MN 56570



website: www.AffinityRealEstate.com | email: info@affinityrealestate.com | office: 218-237-3333 | fax:218-237-3377



\$60,000
MLS 6611617 Residential
54540 Main Street
Osage MN 56570