



MLS 6611894 Residential

\$289,000

2,400 sq ft
2 bedrooms
1 baths

32479 615th Avenue
Wadena MN 56482

Status: Pending

Description:

Immaculate Shouse situated on almost 3.5 acres with Mature pine trees for privacy. This well care for building has room to add your own personal touches with some unfinished spaces in the bathroom and bedrooms upstairs. It has an outdoor car port and shed for storage. The long round about driveway is fantastic for Trucks, Trailers, Campers, etc.. The Oversized heated shop will allow you to store all of your toys and more. Bathroom and laundry located on the main level for ease of use. Gorgeous field views, and very quiet... although very conveniently located just 3 miles out of Wadena.

Additional Details:

Year Built	2003
Lot Acres	3.47
Lot Dimensions	3.47acres
Garage Stalls	1
School District	2155
Taxes	\$2,280
Taxes with Assessments	\$2,360
Tax Year	2023

Additional Features:

Basement: None **Fuel:** Propane **Garage:** 1 **Heat:** Baseboard **Sewer:** Septic System Compliant - Yes **Water:** Well **Air Conditioning:** None

Driving Directions:

South off of 29 as you are heading into Wadena. Edge of Pine Trees. White House will be present before property.



Listed By:
Weichert RE - Paulson Land Co

Affinity Real Estate Inc. participates in the Regional Multiple Listing Service of Minnesota, Inc Broker Reciprocity (sm) program, allowing us to display other broker's listings on our website. All properties are subject to prior sale, change or withdrawal.



Call Affinity Real Estate

218-237-3333

info@affinityrealestate.com



Affinity Real Estate - 600 Park Avenue South - Park Rapids MN 56470



website: www.AffinityRealEstate.com | email: info@affinityrealestate.com | office: 218-237-3333 | fax: 218-237-3377

Affinity
REAL ESTATE INC

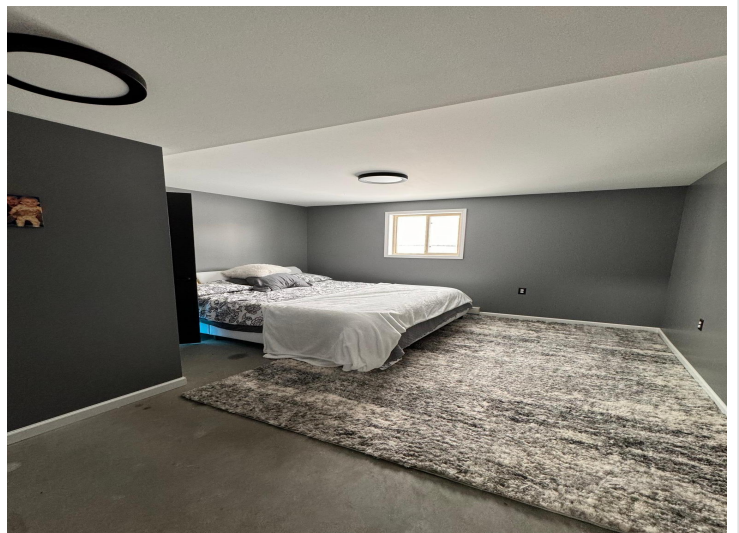
\$289,000
MLS 6611894 Residential
32479 615th Avenue
Wadena MN 56482



website: www.AffinityRealEstate.com | email: info@affinityrealestate.com | office: 218-237-3333 | fax:218-237-3377



\$289,000
MLS 6611894 Residential
32479 615th Avenue
Wadena MN 56482



website: www.AffinityRealEstate.com | email: info@affinityrealestate.com | office: 218-237-3333 | fax:218-237-3377

Affinity
REAL ESTATE INC

\$289,000
MLS 6611894 Residential
32479 615th Avenue
Wadena MN 56482



Just Listed

Weichert
Paulson Land
Company

32479 615th Avenue

Wadena, MN 56482

Listed for:
\$315,000



website: www.AffinityRealEstate.com | email: info@affinityrealestate.com | office: 218-237-3333 | fax: 218-237-3377

Affinity
REAL ESTATE INC

\$289,000
MLS 6611894 Residential
32479 615th Avenue
Wadena MN 56482