



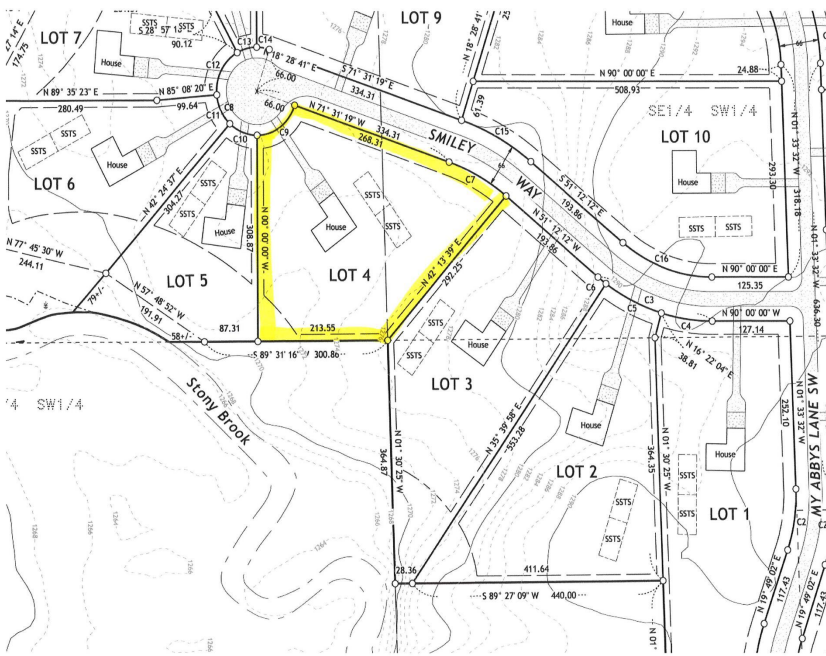
MLS 6612064 Land

\$59,900

2.3 Acres
Finished Lot(s)

LOT 4, Blk 1 Smiley Way
Pequot Lakes MN 56472

Status: Active



Description:

New residential neighborhood in the heart of the Nisswa and Pequot Lakes area. Nicely wooded 2.25+ acre lots are designed to offer peace and privacy in a rural setting and a great location for your new home. New streets, without through traffic are nearing completion and will be paved next Spring by developer. CW Power and TDS cable are available at street. This offering is Phase 1 of RJ Estates with 30 platted parcels, other parcels in this plat may be available at this time. Close to Gull Lake, Pillsbury State forest, Pelican lake, championship golf and all the lakes area has to offer. See covenants and plat in supplements.

Additional Details:

Lot Acres	2.3
Lot Dimensions	249x292x213x308
School District	186
Taxes	(unreported)
Taxes with Assessments	(unreported)
Tax Year	2024

Additional Features:

Driving Directions:

From Nisswa, North on Hwy 371 to Left on Co Rd 29 (Wilderness Rd) to Right on Co Rd 78 (17th Ave) to Left on 72nd St SW, first left on Smiley Way to sign.



Listed By:
Kurilla Real Estate LTD

Affinity Real Estate Inc. participates in the Regional Multiple Listing Service of Minnesota, Inc Broker Reciprocity (sm) program, allowing us to display other broker's listings on our website. All properties are subject to prior sale, change or withdrawal.



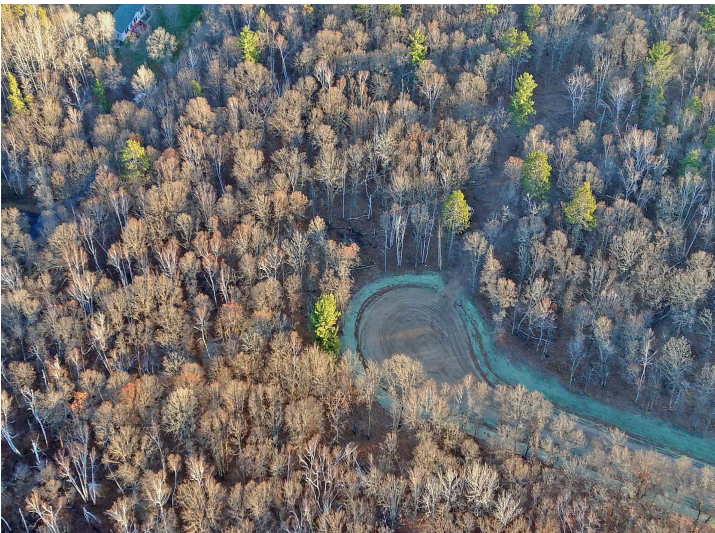
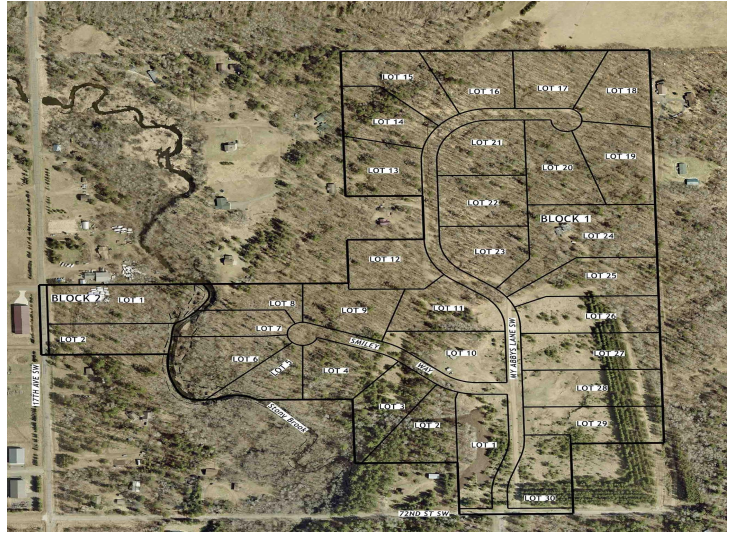
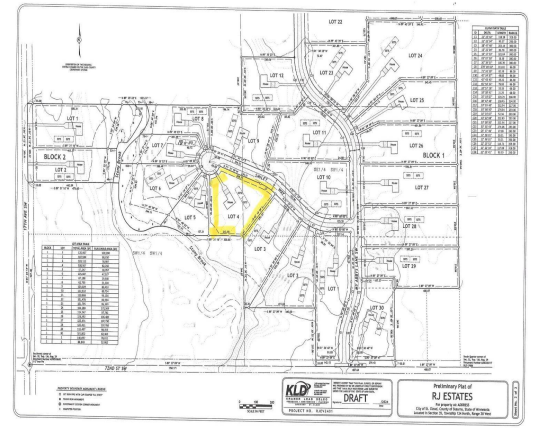
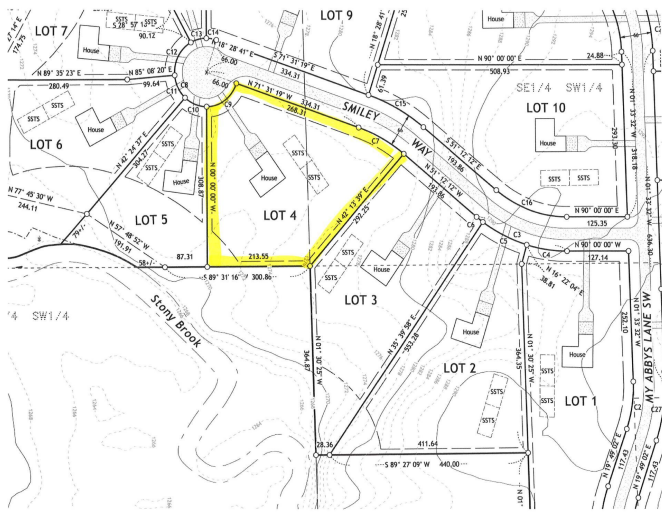
Call Affinity Real Estate

218-237-3333

info@affinityrealestate.com



Affinity Real Estate - 600 Park Avenue South - Park Rapids MN 56470



website: www.AffinityRealEstate.com | email: info@affinityrealestate.com | office: 218-237-3333 | fax:218-237-3377



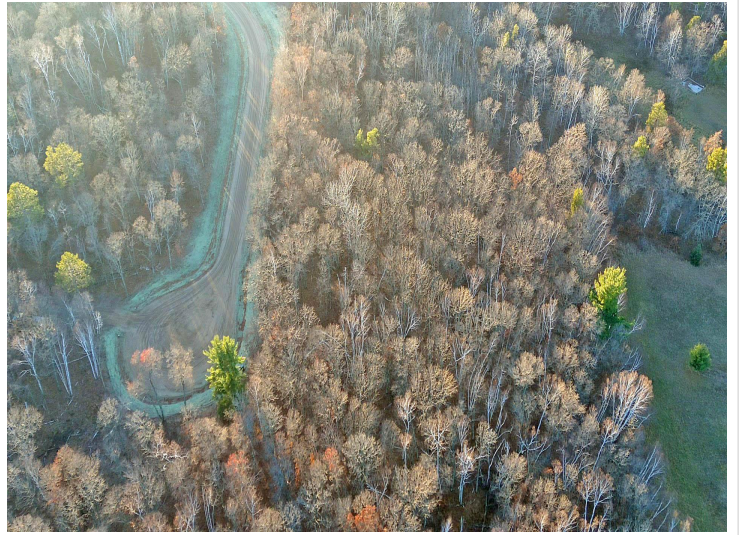
\$59,900
 MLS 6612064 Land
 LOT 4, Blk 1 Smiley Way
 Pequot Lakes MN 56472



website: www.AffinityRealEstate.com | email: info@affinityrealestate.com | office: 218-237-3333 | fax:218-237-3377



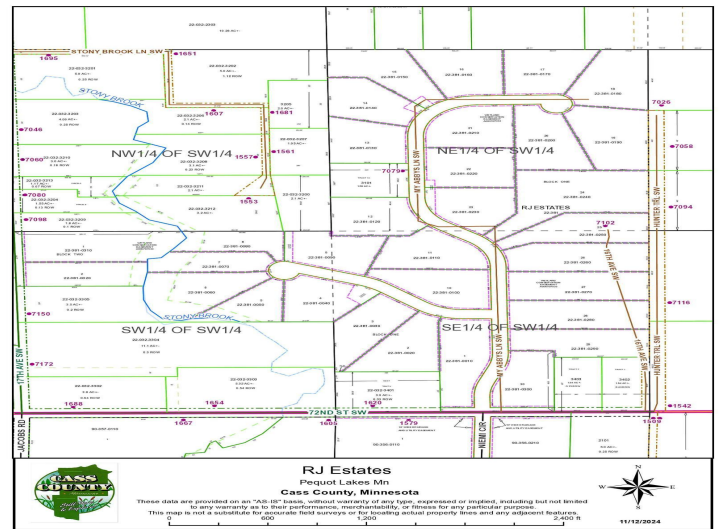
\$59,900
MLS 6612064 Land
LOT 4, Blk 1 Smiley Way
Pequot Lakes MN 56472



website: www.AffinityRealEstate.com | email: info@affinityrealestate.com | office: 218-237-3333 | fax:218-237-3377



\$59,900
MLS 6612064 Land
LOT 4, Blk 1 Smiley Way
Pequot Lakes MN 56472



website: www.AffinityRealEstate.com | email: info@affinityrealestate.com | office: 218-237-3333 | fax:218-237-3377



\$59,900
MLS 6612064 Land
LOT 4, Blk 1 Smiley Way
Pequot Lakes MN 56472