



MLS 6612185 Lake Home

\$1,049,000

3,464 sq ft
4 bedrooms
3 baths

22012 Excelsior Drive
Nevis MN 56467

Waterfront: Belle Taine

Status: Pending

Description:

Full log year-round home located on one of the areas premier lake, Belle Taine and nestled in mature pines with 184 feet of level sandy beach in a quiet bay. Turnkey and eye-catching interior details features 4 bedrooms, 3 baths, 3 season porch with walk out to the composite decking, stone fireplace, Australian cypress flooring, tile, granite countertops, F/A - C/A, private master and bath, and open living areas for easy entertaining and gatherings. Another feature that will put you in complete awe is the newly finished full walk-out basement, outside patio, kitchenette, bedroom with egress window and custom cabinets and lots of storage. The amazing and comfortable feel as you walk in will engulf you with the feeling that you are finally home. Additionally, this property has a successful VRBO history. Take the next step to make it yours before someone finds out about this best kept secret.

Additional Details:

Year Built	2004
Lot Acres	1.03
Lot Dimensions	184x338x95x355
School District	308
Taxes	\$4,500
Taxes with Assessments	\$4,710
Tax Year	2024

Additional Features:

Fuel: Electric, Propane **Heat:** Forced Air, Fireplace(s), Heat Pump

Driving Directions:

From 34/71 go east on 34 to Cty 226 (Dorset corner) turn left. Go approx 1 mile to a right on 200th Street and turn right, follow to a right on 219th Avenue to Excelsior Drive and turn left to #22012



Listed By:
Affinity Real Estate Inc.

Affinity Real Estate Inc. participates in the Regional Multiple Listing Service of Minnesota, Inc Broker Reciprocity (sm) program, allowing us to display other broker's listings on our website. All properties are subject to prior sale, change or withdrawal.



Call Affinity Real Estate

218-237-3333

info@affinityrealestate.com



Affinity Real Estate - 600 Park Avenue South - Park Rapids MN 56470



website: www.AffinityRealEstate.com | email: info@affinityrealestate.com | office: 218-237-3333 | fax:218-237-3377

Affinity
REAL ESTATE INC

\$1,049,000
MLS 6612185 Lake Home
22012 Excelsior Drive
Nevis MN 56467



website: www.AffinityRealEstate.com | email: info@affinityrealestate.com | office: 218-237-3333 | fax:218-237-3377



\$1,049,000
MLS 6612185 Lake Home
22012 Excelsior Drive
Nevis MN 56467



website: www.AffinityRealEstate.com | email: info@affinityrealestate.com | office: 218-237-3333 | fax:218-237-3377



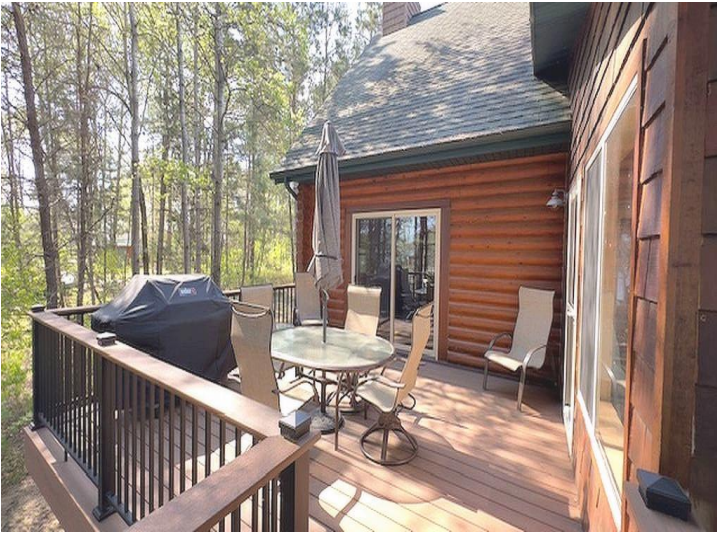
\$1,049,000
MLS 6612185 Lake Home
22012 Excelsior Drive
Nevis MN 56467



website: www.AffinityRealEstate.com | email: info@affinityrealestate.com | office: 218-237-3333 | fax:218-237-3377

Affinity
REAL ESTATE INC

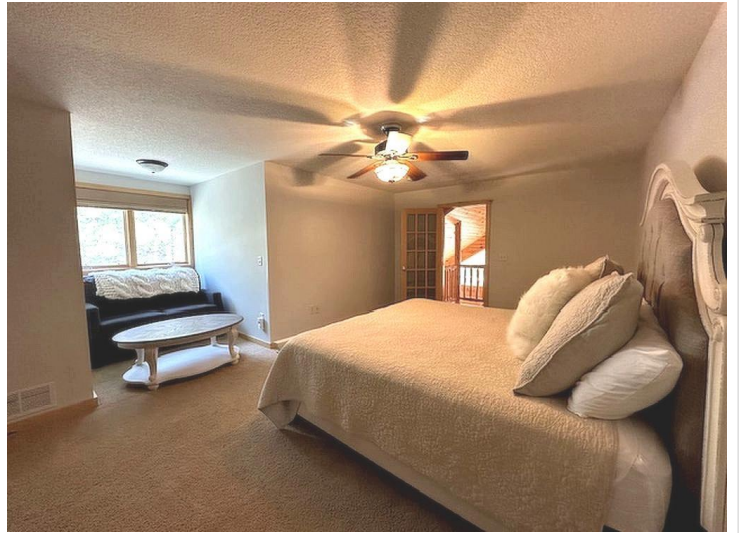
\$1,049,000
MLS 6612185 Lake Home
22012 Excelsior Drive
Nevis MN 56467



website: www.AffinityRealEstate.com | email: info@affinityrealestate.com | office: 218-237-3333 | fax:218-237-3377



\$1,049,000
MLS 6612185 Lake Home
22012 Excelsior Drive
Nevis MN 56467



website: www.AffinityRealEstate.com | email: info@affinityrealestate.com | office: 218-237-3333 | fax:218-237-3377

Affinity
REAL ESTATE INC

\$1,049,000
MLS 6612185 Lake Home
22012 Excelsior Drive
Nevis MN 56467



website: www.AffinityRealEstate.com | email: info@affinityrealestate.com | office: 218-237-3333 | fax: 218-237-3377

Affinity
REAL ESTATE INC

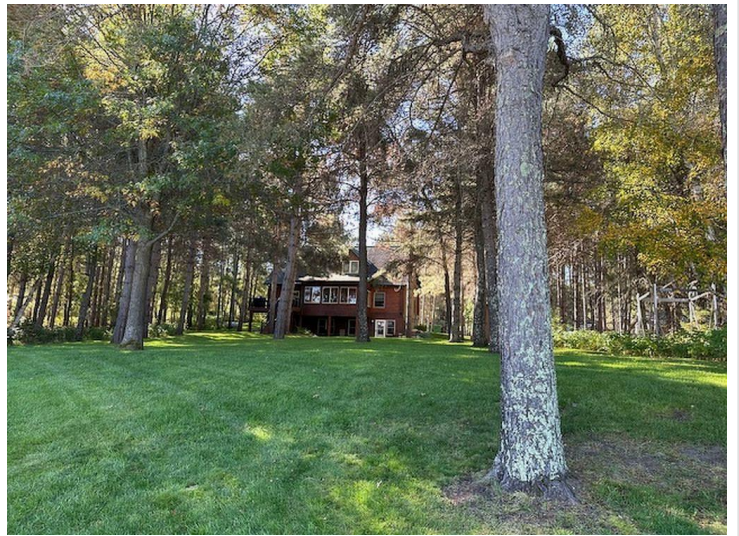
\$1,049,000
MLS 6612185 Lake Home
22012 Excelsior Drive
Nevis MN 56467



website: www.AffinityRealEstate.com | email: info@affinityrealestate.com | office: 218-237-3333 | fax: 218-237-3377

Affinity
REAL ESTATE INC

\$1,049,000
MLS 6612185 Lake Home
22012 Excelsior Drive
Nevis MN 56467



website: www.AffinityRealEstate.com | email: info@affinityrealestate.com | office: 218-237-3333 | fax:218-237-3377



\$1,049,000
MLS 6612185 Lake Home
22012 Excelsior Drive
Nevis MN 56467



website: www.AffinityRealEstate.com | email: info@affinityrealestate.com | office: 218-237-3333 | fax:218-237-3377



\$1,049,000
MLS 6612185 Lake Home
22012 Excelsior Drive
Nevis MN 56467