



MLS 6612339 Residential

\$149,900

1,152 sq ft
3 bedrooms
1 baths

11585 Airport Road
Staples MN 56479

Status: Hold

Description:

Welcome to this charming 2 acre, one-level living home located on the north edge of Staples! Whether you are looking for elbow room or wanting to start your hobby farm, this is the perfect spot just outside of city limits. This cozy three-bedroom, one-bath home offers the perfect blend of comfort and potential. 20 x 20 detached garage for storage and parking. The main level features two spacious bedrooms, a full bathroom, and convenient laundry, while the third bedroom upstairs provides extra flexibility. Set on two peaceful acres, the large private yard offers plenty of space for outdoor enjoyment or future expansion. Recent updates include the addition of another bedroom on the main, new flooring throughout the main living level, along with a refreshed bathroom, but there's still room to add your personal touch and build equity. Don't miss this opportunity—schedule your private showing today!

Additional Details:

Year Built	1948
Lot Acres	2
Lot Dimensions	375x265
Garage Stalls	2
School District	2170
Taxes	\$1,010
Taxes with Assessments	\$1,010
Tax Year	2024

Additional Features:

Fuel: Electric, Oil **Heat:** Dual, Forced Air

Driving Directions:

From US Hwy 10 in Staples turn north on Cardinal Drive to Airport Road; turn north on Airport Road, drive to 4-way stop at Central Lakes College & continue north. Property on west side (Left) of street. See sign.



Listed By:
eXp Realty

Affinity Real Estate Inc. participates in the Regional Multiple Listing Service of Minnesota, Inc Broker Reciprocity (sm) program, allowing us to display other broker's listings on our website. All properties are subject to prior sale, change or withdrawal.



Call Affinity Real Estate

218-237-3333

info@affinityrealestate.com



Affinity Real Estate - 600 Park Avenue South - Park Rapids MN 56470



website: www.AffinityRealEstate.com | email: info@affinityrealestate.com | office: 218-237-3333 | fax:218-237-3377



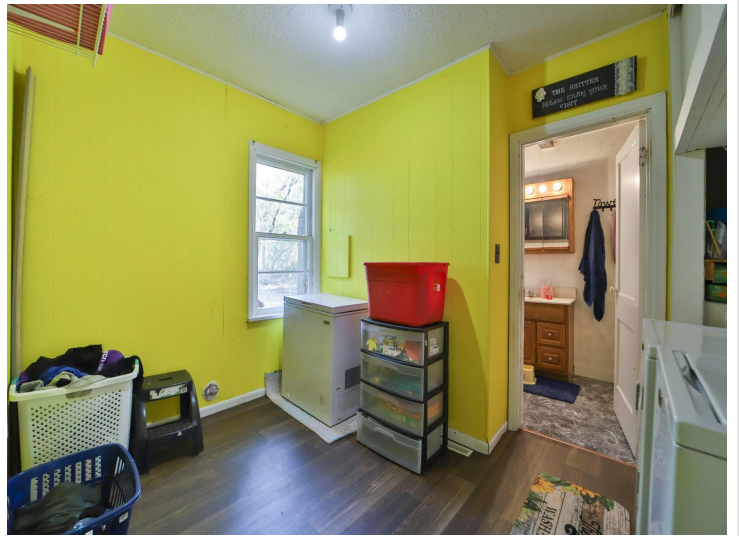
\$149,900
MLS 6612339 Residential
11585 Airport Road
Staples MN 56479



website: www.AffinityRealEstate.com | email: info@affinityrealestate.com | office: 218-237-3333 | fax:218-237-3377

Affinity
REAL ESTATE INC

\$149,900
MLS 6612339 Residential
11585 Airport Road
Staples MN 56479



website: www.AffinityRealEstate.com | email: info@affinityrealestate.com | office: 218-237-3333 | fax:218-237-3377

Affinity
REAL ESTATE INC

\$149,900
MLS 6612339 Residential
11585 Airport Road
Staples MN 56479



website: www.AffinityRealEstate.com | email: info@affinityrealestate.com | office: 218-237-3333 | fax:218-237-3377

Affinity
REAL ESTATE INC

\$149,900
MLS 6612339 Residential
11585 Airport Road
Staples MN 56479



website: www.AffinityRealEstate.com | email: info@affinityrealestate.com | office: 218-237-3333 | fax:218-237-3377



\$149,900
MLS 6612339 Residential
11585 Airport Road
Staples MN 56479