



MLS 6612649 Lake Land

**\$1,500,000**



**Description:**

Over 5 acres and 550' frontage on Detroit Lake!! These 5 parcels include stunning views AND access to the lake on the east side. Space to Build WITH rare elbow room on such a desirable lake! Mature trees abound on this private oasis waiting for you in the heart of Detroit Lakes. Multiple restaurants, fuel, and many fun events on or near the water, Detroit Lake has so much to offer year round! The new South Shore park is right around the corner for pickleball, playground and more. There is no other property like this on Detroit Lake, check it out today!

**Additional Details:**

Lot Acres	5.65
Lot Dimensions	IRR
School District	22
Taxes	\$20,020
Taxes with Assessments	\$20,020
Tax Year	2024

**Additional Features:**

**Driving Directions:**

From Caulfield Studios DL  
Head southwest toward E Shore Dr  
335 ft  
Turn right onto E Shore Dr  
89 ft  
Turn left onto S Shore Dr  
Destination will be on the right  
1.7 mi



Listed By:  
RE/MAX LAKES REGION

Affinity Real Estate Inc. participates in the Regional Multiple Listing Service of Minnesota, Inc Broker Reciprocity (sm) program, allowing us to display other broker's listings on our website. All properties are subject to prior sale, change or withdrawal.



**Call Affinity Real Estate**

**218-237-3333**

**info@affinityrealestate.com**



**Affinity Real Estate - 600 Park Avenue South - Park Rapids MN 56470**



website: [www.AffinityRealEstate.com](http://www.AffinityRealEstate.com) | email: [info@affinityrealestate.com](mailto:info@affinityrealestate.com) | office: 218-237-3333 | fax:218-237-3377



**\$1,500,000**  
MLS 6612649 Lake Land  
792 Shore Drive  
Detroit Lakes MN 56501



website: [www.AffinityRealEstate.com](http://www.AffinityRealEstate.com) | email: [info@affinityrealestate.com](mailto:info@affinityrealestate.com) | office: 218-237-3333 | fax:218-237-3377

**Affinity**  
REAL ESTATE INC

**\$1,500,000**  
MLS 6612649 Lake Land  
792 Shore Drive  
Detroit Lakes MN 56501



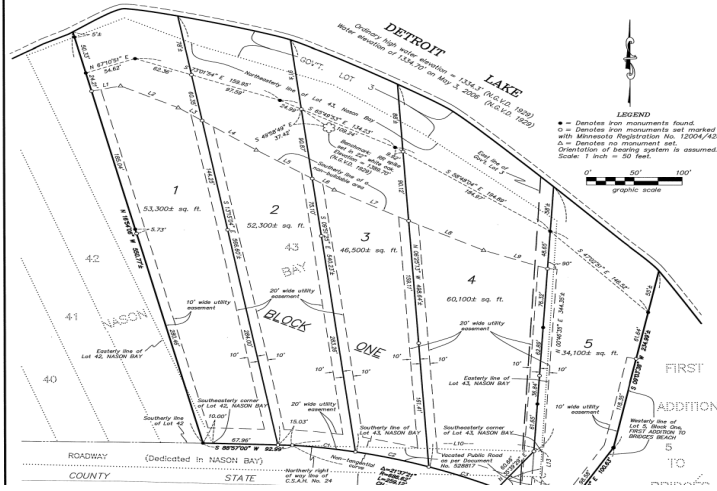
website: [www.AffinityRealEstate.com](http://www.AffinityRealEstate.com) | email: [info@affinityrealestate.com](mailto:info@affinityrealestate.com) | office: 218-237-3333 | fax:218-237-3377

**Affinity**  
REAL ESTATE INC

**\$1,500,000**  
MLS 6612649 Lake Land  
792 Shore Drive  
Detroit Lakes MN 56501



# BLUFF VIEW ESTATES



website: [www.AffinityRealEstate.com](http://www.AffinityRealEstate.com) | email: [info@affinityrealestate.com](mailto:info@affinityrealestate.com) | office: 218-237-3333 | fax: 218-237-3377



**\$1,500,000**  
 MLS 6612649 Lake Land  
 792 Shore Drive  
 Detroit Lakes MN 56501