



MLS 6612768 Residential

\$329,000

2,320 sq ft
3 bedrooms
3 baths

22119 County Road 9
Verndale MN 56481

Status: Active

Description:

8.4 Acre home in a County Setting located about 7 miles South of Nimrod and 17 miles north of Highway 10. This home is spacious and set back from the tar with privacy. It has an open concept with kitchen/dining and living room that's very accessible and airy. Spacious halls and 36" doors with all living facilities on one level. No steps or stairs. Heated attached garage with room for vehicles, workspace and toys. Outdoor playhouse included. Please allow 24-hour notice for showings. Seller taking deep freezer. Parcel has been recently surveyed.

Additional Details:

Year Built	2010
Lot Acres	8.4
Lot Dimensions	getting
Garage Stalls	1
School District	820
Taxes	\$2,672
Taxes with Assessments	\$2,732
Tax Year	2024

Additional Features:

Basement: None **Fuel:** Electric, Propane **Garage:** 1 **Heat:** Baseboard, Radiant Floor **Sewer:** Septic System Compliant - Yes **Water:** Drilled, Sand Point **Air Conditioning:** Window Unit(s)

Driving Directions:

From Nimrod, Go South on County Road 26 to County Road 9. Take a Right. Property is on the left.



Listed By:
National Realty Guild

Affinity Real Estate Inc. participates in the Regional Multiple Listing Service of Minnesota, Inc Broker Reciprocity (sm) program, allowing us to display other broker's listings on our website. All properties are subject to prior sale, change or withdrawal.



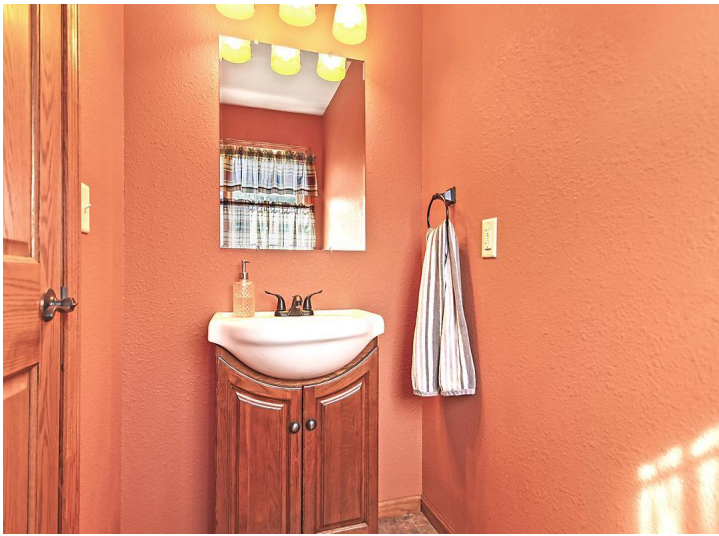
Call Affinity Real Estate

218-237-3333

info@affinityrealestate.com



Affinity Real Estate - 600 Park Avenue South - Park Rapids MN 56470



website: www.AffinityRealEstate.com | email: info@affinityrealestate.com | office: 218-237-3333 | fax:218-237-3377



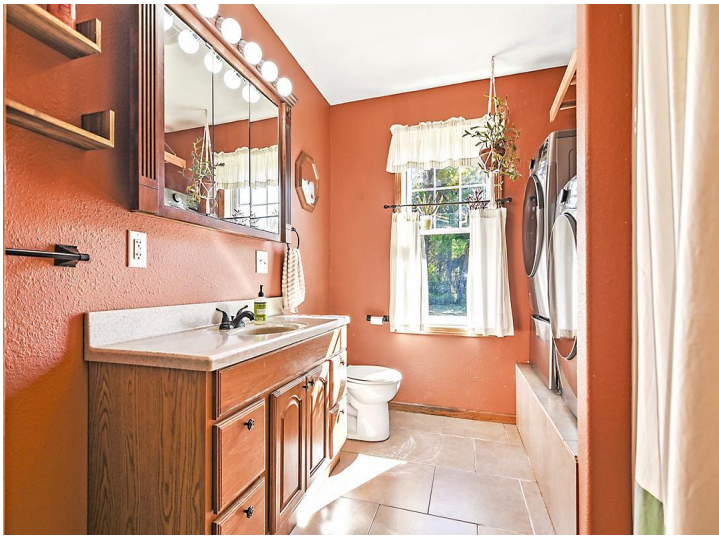
\$329,000
MLS 6612768 Residential
22119 County Road 9
Verndale MN 56481



website: www.AffinityRealEstate.com | email: info@affinityrealestate.com | office: 218-237-3333 | fax: 218-237-3377

Affinity
REAL ESTATE INC

\$329,000
MLS 6612768 Residential
22119 County Road 9
Verndale MN 56481



website: www.AffinityRealEstate.com | email: info@affinityrealestate.com | office: 218-237-3333 | fax:218-237-3377

Affinity
REAL ESTATE INC

\$329,000
MLS 6612768 Residential
22119 County Road 9
Verndale MN 56481



website: www.AffinityRealEstate.com | email: info@affinityrealestate.com | office: 218-237-3333 | fax: 218-237-3377

Affinity
REAL ESTATE INC

\$329,000
MLS 6612768 Residential
22119 County Road 9
Verndale MN 56481



website: www.AffinityRealEstate.com | email: info@affinityrealestate.com | office: 218-237-3333 | fax:218-237-3377

Affinity
REAL ESTATE INC

\$329,000
MLS 6612768 Residential
22119 County Road 9
Verndale MN 56481



website: www.AffinityRealEstate.com | email: info@affinityrealestate.com | office: 218-237-3333 | fax: 218-237-3377

Affinity
REAL ESTATE INC

\$329,000
MLS 6612768 Residential
22119 County Road 9
Verndale MN 56481