



MLS 6614119 Residential

\$314,900

2,880 sq ft
4 bedrooms
2 baths

53531 State Highway 210
Henning MN 56551

Status: Active

Description:

Here is the large house you have been searching for. 2 levels with a full basement for use as a workshop and family room. Main floor laundry with updated rooms and an open kitchen/dining area which includes a large island. This house has a history as a rural school house and still has the original flooring in the kitchen/dining area (dining area has a floating floor over the wood). The property is near a very large area of public land and offers a deck and pergola for a relaxing view of nature.

Additional Details:

Year Built	1920
Lot Acres	1.49
Lot Dimensions	208x312
Garage Stalls	2
School District	545
Taxes	\$1,458
Taxes with Assessments	\$1,458
Tax Year	2024

Additional Features:

Basement: Block, Finished, Full, Unfinished, Wood **Fuel:** Propane **Garage:** 2 **Heat:** Baseboard, Forced Air **Sewer:** Septic System Compliant - Yes, Tank with Drainage Field **Water:** Drilled, Well **Air Conditioning:** Central Air

Driving Directions:

From the intersection of state highways 210 and 29, travel west for 2 miles. The property is on the right.



Listed By:
Weichert RE - Paulson Land Co

Affinity Real Estate Inc. participates in the Regional Multiple Listing Service of Minnesota, Inc Broker Reciprocity (sm) program, allowing us to display other broker's listings on our website. All properties are subject to prior sale, change or withdrawal.



Call Affinity Real Estate

218-237-3333

info@affinityrealestate.com



Affinity Real Estate - 600 Park Avenue South - Park Rapids MN 56470



website: www.AffinityRealEstate.com | email: info@affinityrealestate.com | office: 218-237-3333 | fax: 218-237-3377

Affinity
REAL ESTATE INC

\$314,900
MLS 6614119 Residential
53531 State Highway 210
Henning MN 56551



website: www.AffinityRealEstate.com | email: info@affinityrealestate.com | office: 218-237-3333 | fax:218-237-3377

Affinity
REAL ESTATE INC

\$314,900
MLS 6614119 Residential
53531 State Highway 210
Henning MN 56551



website: www.AffinityRealEstate.com | email: info@affinityrealestate.com | office: 218-237-3333 | fax:218-237-3377



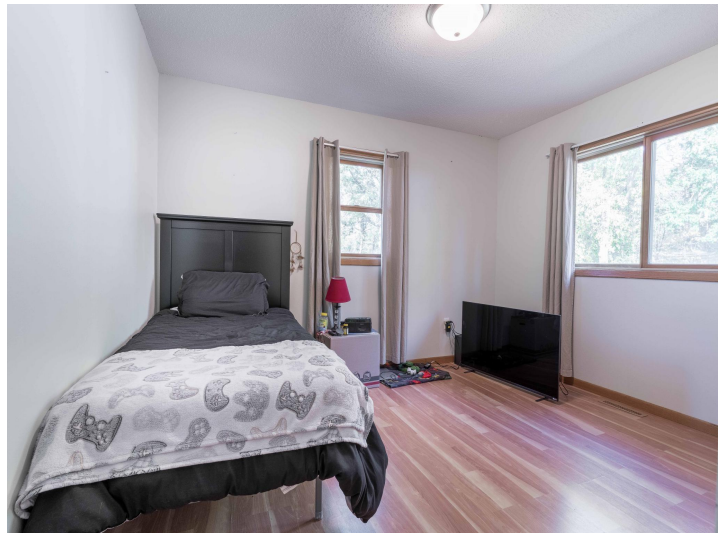
\$314,900
MLS 6614119 Residential
53531 State Highway 210
Henning MN 56551



website: www.AffinityRealEstate.com | email: info@affinityrealestate.com | office: 218-237-3333 | fax:218-237-3377



\$314,900
MLS 6614119 Residential
53531 State Highway 210
Henning MN 56551



website: www.AffinityRealEstate.com | email: info@affinityrealestate.com | office: 218-237-3333 | fax:218-237-3377



\$314,900
MLS 6614119 Residential
53531 State Highway 210
Henning MN 56551



website: www.AffinityRealEstate.com | email: info@affinityrealestate.com | office: 218-237-3333 | fax:218-237-3377



\$314,900
MLS 6614119 Residential
53531 State Highway 210
Henning MN 56551



website: www.AffinityRealEstate.com | email: info@affinityrealestate.com | office: 218-237-3333 | fax:218-237-3377

Affinity
REAL ESTATE INC

\$314,900
MLS 6614119 Residential
53531 State Highway 210
Henning MN 56551



website: www.AffinityRealEstate.com | email: info@affinityrealestate.com | office: 218-237-3333 | fax:218-237-3377

Affinity
REAL ESTATE INC

\$314,900
MLS 6614119 Residential
53531 State Highway 210
Henning MN 56551



website: www.AffinityRealEstate.com | email: info@affinityrealestate.com | office: 218-237-3333 | fax:218-237-3377

Affinity
REAL ESTATE INC

\$314,900
MLS 6614119 Residential
53531 State Highway 210
Henning MN 56551



website: www.AffinityRealEstate.com | email: info@affinityrealestate.com | office: 218-237-3333 | fax: 218-237-3377

Affinity
REAL ESTATE INC

\$314,900
MLS 6614119 Residential
53531 State Highway 210
Henning MN 56551



website: www.AffinityRealEstate.com | email: info@affinityrealestate.com | office: 218-237-3333 | fax:218-237-3377



\$314,900
MLS 6614119 Residential
53531 State Highway 210
Henning MN 56551