



MLS 6614337 Commercial

**\$1,250**

30968 Washington Avenue  
Pequot Lakes MN 56472

Status: Active

**Description:**

Lease Opportunity in Pequot Lakes available! Prime office/multi-use space opportunity in a dual-tenant building. One unit is used by a CPA, leaving a perfect space available for your business. Situated just off Main Street in Pequot Lakes, this location offers excellent visibility, high traffic flow from the 4-way stop at Main & Rasmussen, and convenient access. The area attracts both locals and tourists who come for shopping and services, making it an ideal spot to expand your business.

**Additional Details:**

Year Built	1980
Lot Acres	0.09
Lot Dimensions	50x80
School District	186
Taxes	\$2,501
Taxes with Assessments	\$2,526
Tax Year	2024

**Additional Features:**

**Fuel:** Electric, Natural Gas **Heat:** Baseboard

**Driving Directions:**

From the stoplight intersection in Pequot Lakes (Patriot Ave & CR 11) - East on Main Street - South on S Washington Ave - Property is 2nd Building on the East



Listed By:  
Real Broker, LLC

Affinity Real Estate Inc. participates in the Regional Multiple Listing Service of Minnesota, Inc Broker Reciprocity (sm) program, allowing us to display other broker's listings on our website. All properties are subject to prior sale, change or withdrawal.



**Call Affinity Real Estate**

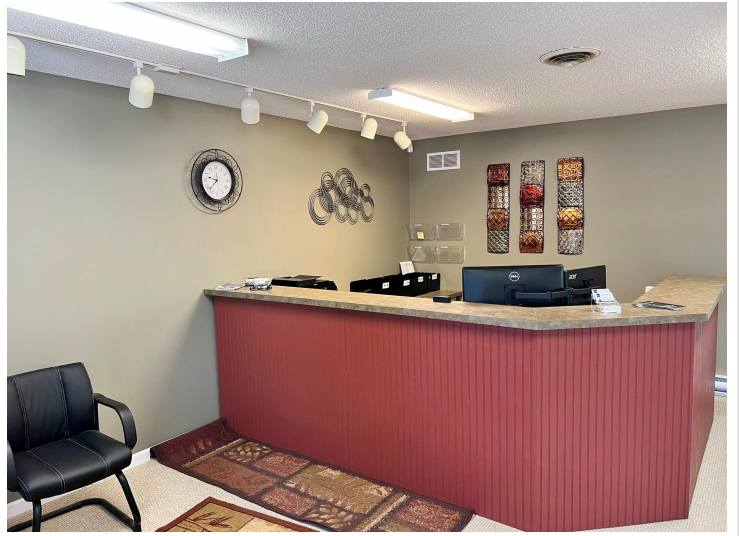
**218-237-3333**

**info@affinityrealestate.com**



**Affinity Real Estate - 600 Park Avenue South - Park Rapids MN 56470**





website: [www.AffinityRealEstate.com](http://www.AffinityRealEstate.com) | email: [info@affinityrealestate.com](mailto:info@affinityrealestate.com) | office: 218-237-3333 | fax: 218-237-3377

**Affinity**  
REAL ESTATE INC

**\$1,250**  
MLS 6614337 Commercial  
30968 Washington Avenue  
Pequot Lakes MN 56472





website: [www.AffinityRealEstate.com](http://www.AffinityRealEstate.com) | email: [info@affinityrealestate.com](mailto:info@affinityrealestate.com) | office: 218-237-3333 | fax: 218-237-3377

**Affinity**  
REAL ESTATE INC

**\$1,250**  
MLS 6614337 Commercial  
30968 Washington Avenue  
Pequot Lakes MN 56472



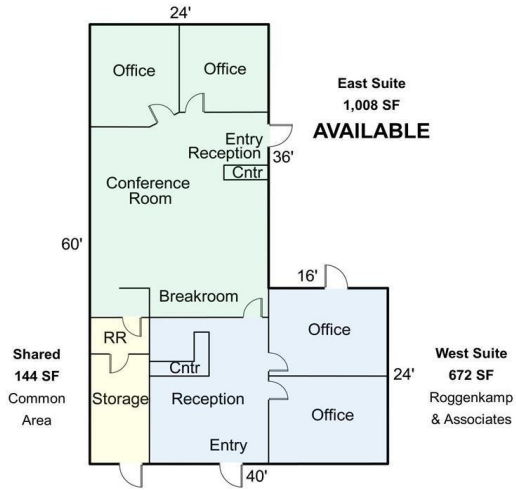


website: [www.AffinityRealEstate.com](http://www.AffinityRealEstate.com) | email: [info@affinityrealestate.com](mailto:info@affinityrealestate.com) | office: 218-237-3333 | fax: 218-237-3377

**Affinity**  
REAL ESTATE INC

**\$1,250**  
MLS 6614337 Commercial  
30968 Washington Avenue  
Pequot Lakes MN 56472





website: [www.AffinityRealEstate.com](http://www.AffinityRealEstate.com) | email: [info@affinityrealestate.com](mailto:info@affinityrealestate.com) | office: 218-237-3333 | fax:218-237-3377



**\$1,250**  
MLS 6614337 Commercial  
30968 Washington Avenue  
Pequot Lakes MN 56472