



MLS 6614512 Land

\$39,900

3.28 Acres
Raw Land

TBD State Hwy 92
Bagley MN 56621

Status: Active

Description:

Are you wanting to build but do not have time to clear the property? If so, this could be ideal for you! Just over 3 acres minutes south of Bagley on State Hwy 92. A potential building spot tucked in the mature trees could offer forest views and privacy!

Additional Details:

Lot Acres	3.28
Lot Dimensions	193x667x220x536
School District	162
Taxes	\$72
Taxes with Assessments	\$72
Tax Year	2024

Additional Features:

Driving Directions:

From Bagley, South on State 92 to property on the left.



Listed By:
Realty Experts, LLC

Affinity Real Estate Inc. participates in the Regional Multiple Listing Service of Minnesota, Inc Broker Reciprocity (sm) program, allowing us to display other broker's listings on our website. All properties are subject to prior sale, change or withdrawal.



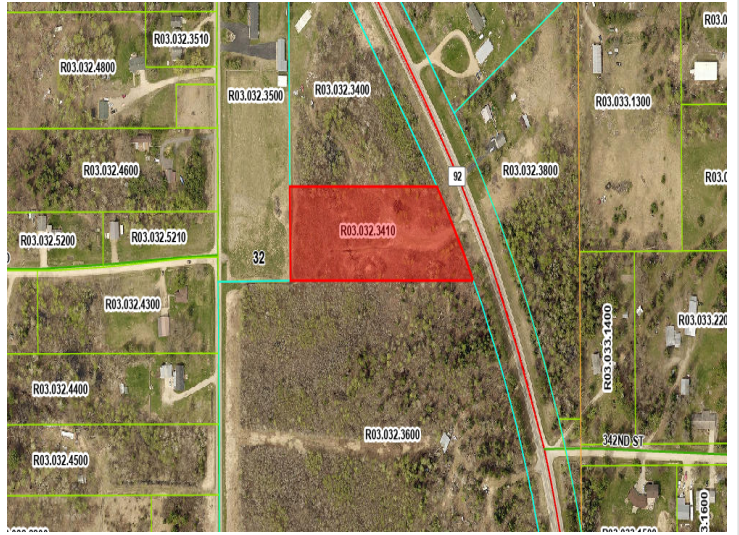
Call Affinity Real Estate

218-237-3333

info@affinityrealestate.com



Affinity Real Estate - 600 Park Avenue South - Park Rapids MN 56470



website: www.AffinityRealEstate.com | email: info@affinityrealestate.com | office: 218-237-3333 | fax:218-237-3377



\$39,900
MLS 6614512 Land
TBD State Hwy 92
Bagley MN 56621



website: www.AffinityRealEstate.com | email: info@affinityrealestate.com | office: 218-237-3333 | fax:218-237-3377



\$39,900
MLS 6614512 Land
TBD State Hwy 92
Bagley MN 56621