



MLS 6614542 Land

\$135,000

1.46 Acres
Raw Land

1845 Nodaway Drive
Detroit Lakes MN 56501

Status: Active

Description:

Large lot on the Southern edge of the city limits of Detroit Lakes and zoned B-3. This buildable lot covers 1.46 acres on two parcels and is 195' wide and 315" deep. City sewer, water and electricity are available. This property is suitable for a single family residence or a twin-home and some Commercial applications.

Additional Details:

Lot Acres	1.46
Lot Dimensions	195x315
School District	22
Taxes	\$598
Taxes with Assessments	\$686
Tax Year	2024

Additional Features:

Driving Directions:

Take West Lake Drive to Long Bridge Road, turn left and follow to Nodaway Dr, turn right and follow to signs.



Listed By:
Counselor Realty Detroit Lakes

Affinity Real Estate Inc. participates in the Regional Multiple Listing Service of Minnesota, Inc Broker Reciprocity (sm) program, allowing us to display other broker's listings on our website. All properties are subject to prior sale, change or withdrawal.



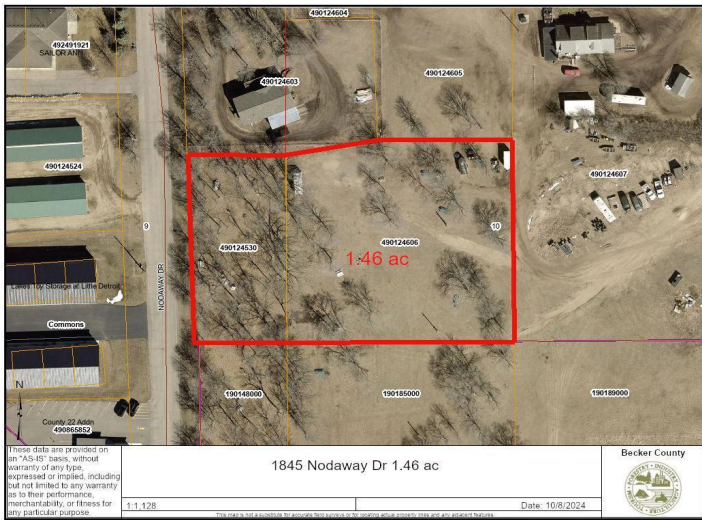
Call Affinity Real Estate

218-237-3333

info@affinityrealestate.com



Affinity Real Estate - 600 Park Avenue South - Park Rapids MN 56470



website: www.AffinityRealEstate.com | email: info@affinityrealestate.com | office: 218-237-3333 | fax: 218-237-3377



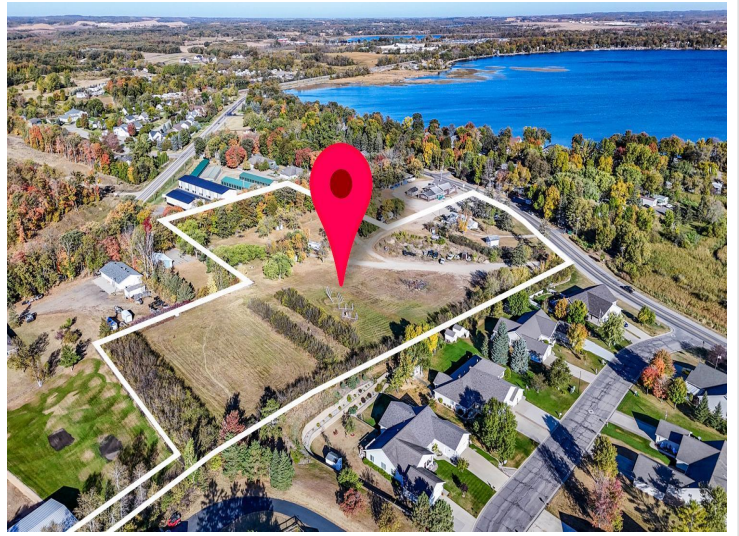
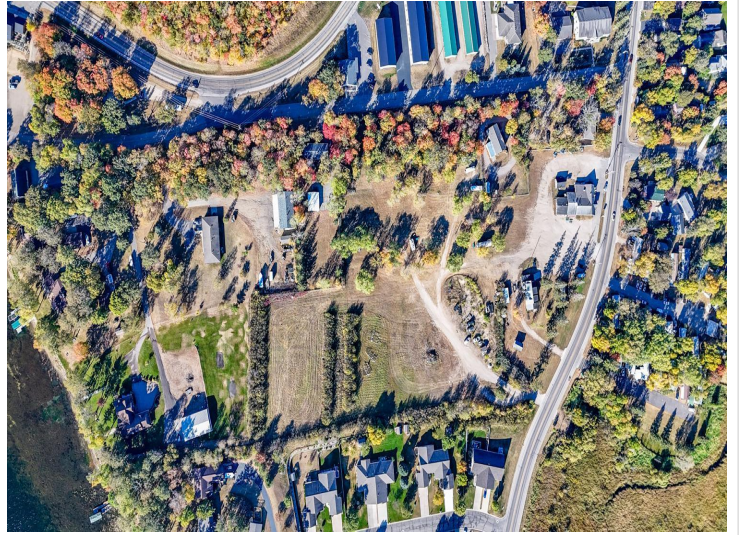
\$135,000
 MLS 6614542 Land
 1845 Nodaway Drive
 Detroit Lakes MN 56501



website: www.AffinityRealEstate.com | email: info@affinityrealestate.com | office: 218-237-3333 | fax:218-237-3377



\$135,000
MLS 6614542 Land
1845 Nodaway Drive
Detroit Lakes MN 56501



website: www.AffinityRealEstate.com | email: info@affinityrealestate.com | office: 218-237-3333 | fax:218-237-3377

Affinity
REAL ESTATE INC

\$135,000
MLS 6614542 Land
1845 Nodaway Drive
Detroit Lakes MN 56501