



MLS 6614551 Lake Home

\$310,000

1,512 sq ft
3 bedrooms
2 baths

2523 County 5
Hackensack MN 56452

Waterfront: Webb

Status: Closed

Description:

Welcome to this charming home with Webb Lake frontage! This beautifully renovated three-bedroom, two-bath residence offers the perfect blend of modern comfort and serene lakeside living. Step inside to discover brand new flooring throughout, fresh paint, and stylish light fixtures that create an inviting atmosphere. Note the updated kitchen, designed for both functionality and style. Relax in the bright three-season porch with lakefront views, with a deck (to be built) off of sunroom. Nestled on a desirable 2.48 lot that borders state land both lakeside and on the west, affording desirable privacy and views. Outside, you'll find a large 30x48 building, perfect for storing your boats, ATVs, and outdoor toys. Don't miss the opportunity to own this affordable home in a tranquil setting with Webb Lake frontage.

Additional Details:

Year Built	2003
Lot Acres	2.48
Lot Dimensions	130x1216x99x1091
Garage Stalls	2
School District	113
Taxes	\$938
Taxes with Assessments	\$1,004
Tax Year	2024

Additional Features:

Basement: None **Fuel:** Propane **Garage:** 2 **Heat:** Forced Air, Fireplace(s) **Sewer:** Mound Septic, Private Sewer, Septic System Compliant - Yes **Water:** Private, Well **Air Conditioning:** Central Air

Driving Directions:

From Hackensack, take County 5 north 5.5 miles to home on right.



Listed By:
Century 21 Brainerd Realty

Affinity Real Estate Inc. participates in the Regional Multiple Listing Service of Minnesota, Inc Broker Reciprocity (sm) program, allowing us to display other broker's listings on our website. All properties are subject to prior sale, change or withdrawal.



Call Affinity Real Estate

218-237-3333

info@affinityrealestate.com



Affinity Real Estate - 600 Park Avenue South - Park Rapids MN 56470



website: www.AffinityRealEstate.com | email: info@affinityrealestate.com | office: 218-237-3333 | fax:218-237-3377



\$310,000
MLS 6614551 Lake Home
2523 County 5
Hackensack MN 56452



website: www.AffinityRealEstate.com | email: info@affinityrealestate.com | office: 218-237-3333 | fax:218-237-3377



\$310,000
MLS 6614551 Lake Home
2523 County 5
Hackensack MN 56452



website: www.AffinityRealEstate.com | email: info@affinityrealestate.com | office: 218-237-3333 | fax:218-237-3377



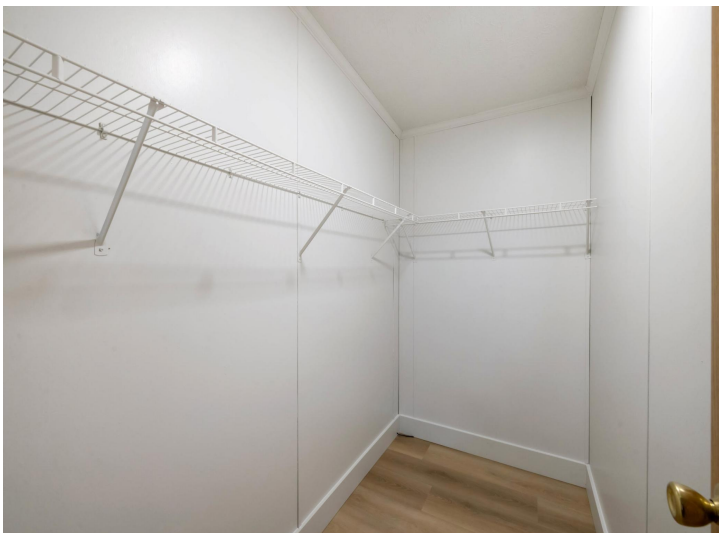
\$310,000
MLS 6614551 Lake Home
2523 County 5
Hackensack MN 56452



website: www.AffinityRealEstate.com | email: info@affinityrealestate.com | office: 218-237-3333 | fax:218-237-3377

Affinity
REAL ESTATE INC

\$310,000
MLS 6614551 Lake Home
2523 County 5
Hackensack MN 56452



website: www.AffinityRealEstate.com | email: info@affinityrealestate.com | office: 218-237-3333 | fax:218-237-3377



\$310,000
MLS 6614551 Lake Home
2523 County 5
Hackensack MN 56452



website: www.AffinityRealEstate.com | email: info@affinityrealestate.com | office: 218-237-3333 | fax:218-237-3377

Affinity
REAL ESTATE INC

\$310,000
MLS 6614551 Lake Home
2523 County 5
Hackensack MN 56452



website: www.AffinityRealEstate.com | email: info@affinityrealestate.com | office: 218-237-3333 | fax:218-237-3377



\$310,000
 MLS 6614551 Lake Home
 2523 County 5
 Hackensack MN 56452